

CTD Data RV Heincke HE448

Data Processing Report

Contents

1	Introduction	1
2	Workflow	1
3	Cruise details	3
4	Sensor Layout	3
5	Processing	3
6	Results	5

Contact:
Gerd Rohardt
Alfred-Wegener-Institute
Am Handelshafen 12, D-27570 Bremerhaven, GERMANY
Mail: info@awi.de

Processing Agency:
FIELAX
Schleusenstr. 14, D-27568 Bremerhaven, GERMANY
Mail: info@fielax.de

Ref.: CTD-HE448-report.pdf

Vers.: 1

Date: 2016/04/07

Status: final

1 Introduction

This report describes the processing of CTD raw data acquired by Seabird SBE 911plus CTD on board RV Heincke during expedition HE448.

2 Workflow

The different steps of processing and validation are visualized in Figure 1. The CTD raw data are delivered from Gerd Rohardt (AWI). The station book of the RV Heincke cruise is extracted from the DAVIS SHIP data base (<https://dship.awi.de>). The first CTD station and cast is processed manually in SBE Data Processing to configure the *.psa Seabird routines *Data Conversion, Wild Edit, Bottle Summary, Split, Translate, Cell Thermal Mass, Loop Edit* and *Bin Average*. The Seabird routines are then run in a batch job *CTDjob* in ManageCTD to process the complete CTD data set. The downcast of each CTD station/cast is used for further processing. In *CTDjob* the start record and the lowest altimeter point of the downcast is selected. With the *Utilities* → *Dship Ebook* function of ManageCTD the DAVIS SHIP station book extraction is used for getting the header information of all CTD stations/casts of the cruise. ManageCTD *Utilities* → *Find Profile* function compares station times of the header with the entries in the station book to find out the correct naming of the stations and casts. In *CTDheader* in ManageCTD the header information of each CTD station/cast is displayed, controlled and corrected if necessary. *CTDdespike* in ManageCTD is used for a visual check of the data and to erase/interpolate spikes in the data if necessary. Additionally, a sensor pair (Temp1/Sal1 or Temp2/Sal2) is chosen for each station/cast of the RV Heincke cruise in *CTDdespike*.

ManageCTD *Utilities* → *CheckDoubleSensors* controls the quality of temperature and conductivity sensors. For this purpose outliers of too high sensor pair differences could be removed. The data is then converted to spreadsheet format with *dsp2odv* for visualization of the data in Ocean Data View (ODV). The second visual inspection of the CTD data allows a comparison with data from other CTD casts from close-by stations to verify the oxygen sensor data. Therefore, potential reference cruise data is downloaded from PANGAEA (<http://www.PANGAEA.de>). The reference data is converted to *.mat format. In the ManageCTD Final Processing the CTD data is displayed together with the reference data. Bad data points, sensors or casts are interpolated or erased from the data set and filters are applied if necessary. The processed CTD data are written to text files and imported to PANGAEA (<http://www.PANGAEA.de>) for publication.

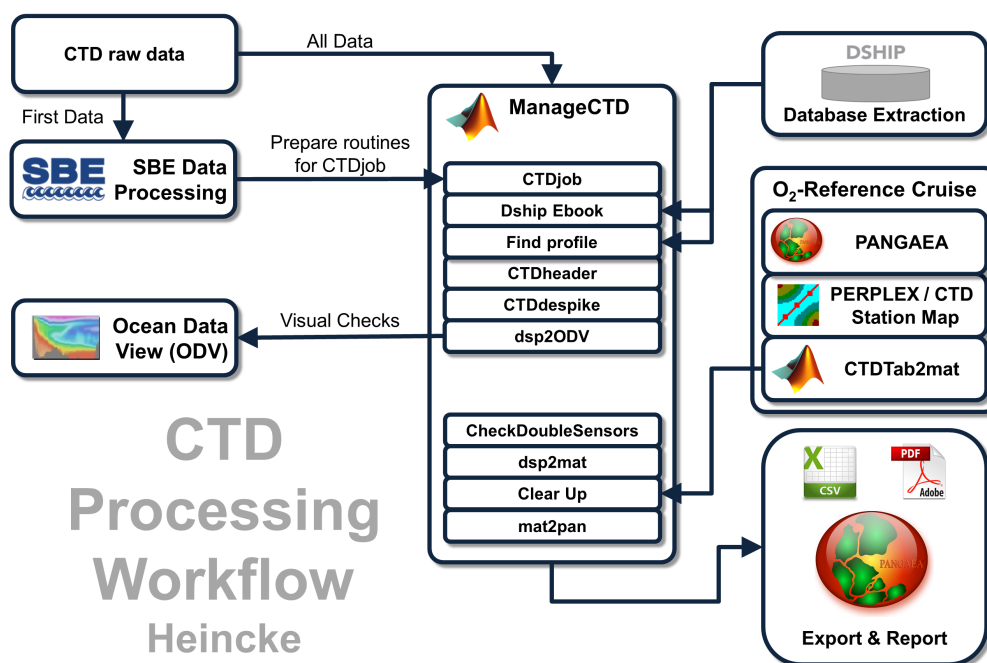


Figure 1: CTD data Processing Workflow

3 Cruise details

Vessel name RV Heincke
 Cruise name HE448
 Cruise start 07.07.2015 Bremerhaven
 Cruise end 30.07.2015 Trondheim
 Cruise duration 24 days
 No. of CTD casts 132

4 Sensor Layout

This chapter describes the CTD sensors mounted during this cruise:

SBE 911plus CTD (SN: 1015), SBE Instrument Configuration Version 7.23.0.1.

ID	Sensor Name	Serial No.	Calibration Date
55	TemperatureSensor	5354	21-Jan-12
3	ConductivitySensor	2470	15-Nov-13
45	PressureSensor	1015	05-Oct-10
55	TemperatureSensor	5375	21-Jan-12
3	ConductivitySensor	3810	08-Feb-12
0	AltimeterSensor	46466	23-Mar-09
71	WET_LabsCStar	1348DR	13-Oct-2010
20	FluoroWetlabECO_AFL_FL_Sensor	1346	26-Feb-2009
38	OxygenSensor	1597	19-Jun-12

5 Processing

Details of processing procedures and processing parameters are described in *CTD Processing Logbook of RV Heincke* ([hdl:10013/epic.47427](https://hdl.handle.net/10013/epic.47427)).

Density Inversions and Manual Validation

Obvious outliers were removed manually. For the visual check density inversions $> 0.005 \text{ kg/m}^3$ and $> 0.01 \text{ kg/m}^3$ were flagged differently for display but removed automatically. Decisions whether the flagged values were manually removed or not are based on the description in *CTD Processing Logbook of RV Heincke* ([hdl:10013/epic.47427](https://hdl.handle.net/10013/epic.47427)).

Sensor Differences

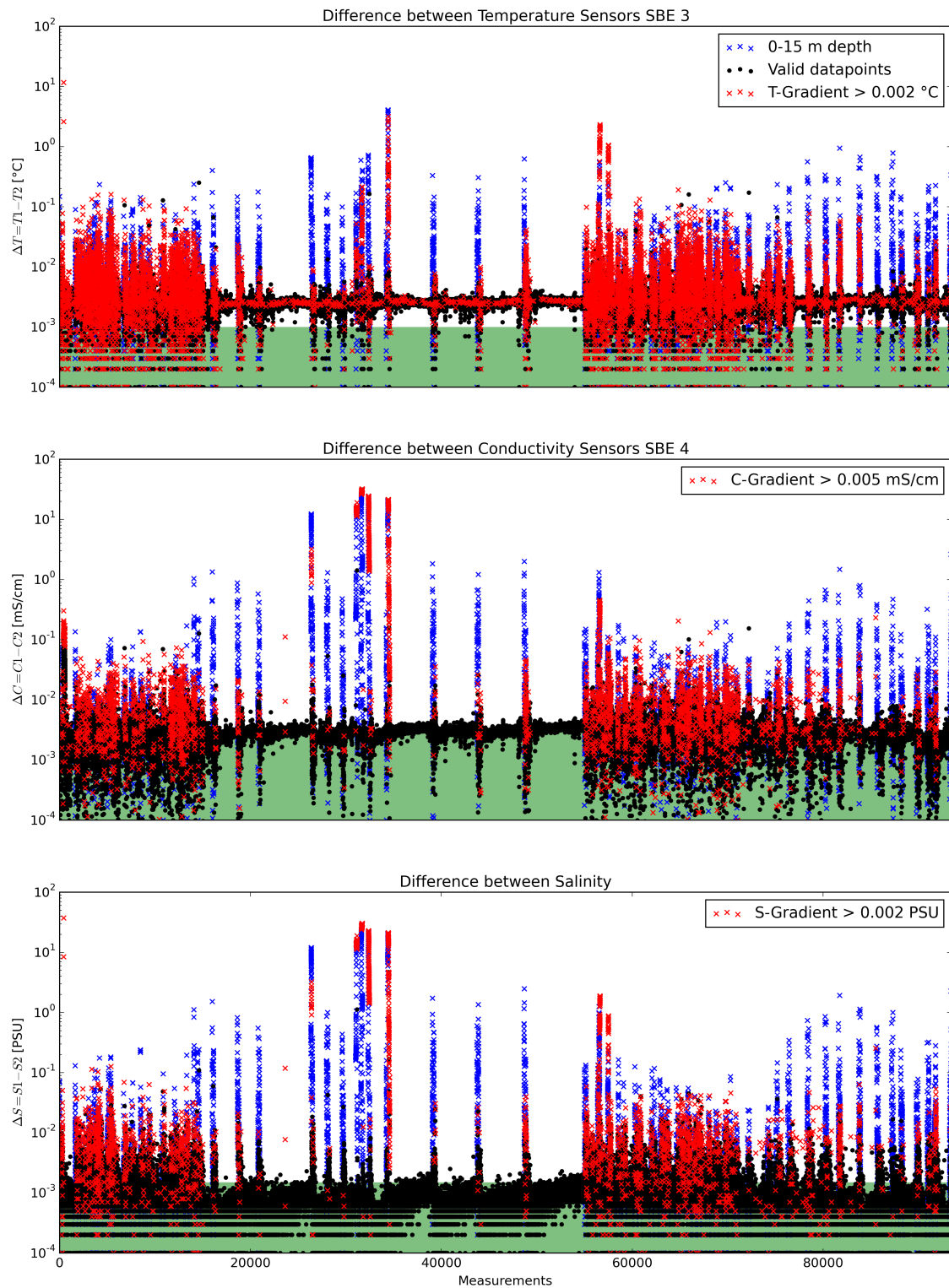


Figure 2: Data accuracy of sensor pairs HE448

6 Results

A complete processing overview for each sensor at each station is summarized in the table in the Appendix (Figure 3).

Double Sensor Check

In Figure 2, the absolute residuals between the two sensorpairs are shown for the measured parameters *Temperature* and *Conductivity* and the derived parameter *Salinity*. Measurements in shallow water depths < 15 m (blue crosses) and gradients between two datapoints exceeding a defined threshold (red crosses) were omitted for accuracy calculation.

Parameter	Accuracy given by manufacturer	Measurements re- moved Surface 0-15m + gradi- ent filter	Remaining measure- ments within accuracy specifi- cations
Temperature	$\pm 0.001^{\circ}C$	18.83%	2.12%
Conductivity	$\pm 0.003mS/cm$	11.86%	62.21%
Salinity	$\pm 0.0015PSU$	11.12%	90.24%

Comments

- 132 CTD/RO "on ground" entries in DShip station book
- 132 CTD raw data sets delivered
- 132 CTD casts processed and uploaded
- no oxygen reference cruise (HE370 min. distance between stations > 400 km);
- 2 stations of HE448 with only 1 cast, all other stations with at least 2 casts, a deep cast to the ground and a shallow cast down to 30m
- oxygen profile shape compared with previous and following station profiles, oxygen data values in the upper 30m compared to second cast at same station
- of these 132 processed CTD casts:
 - 2 oxygen profiles deleted (spiky and not matching to reference casts)
 - 4 temperature profiles deleted (sensor pair differences)
 - 5 salinity profiles deleted (sensor pair differences)
 - 3127 data points interpolated
 - 65 data points erased

Result files

Text File (HE448_phys_oce.tab):

The format is a plain text (tab-delimited values) file.

Column separator	Tabulator "\t"
Column 1	Event label
Column 2	Date/Time of event
Column 3	Latitude of event
Column 4	Longitude of event
Column 5	Elevation of event
Column 6	DEPTH, water
Column 7	Pressure, water
Column 8	Temperature, water
Column 9	Conductivity
Column 10	Salinity
Column 11	Temperature, water, potential
Column 12	Density, sigma-theta (0)
Column 13	Oxygen
Column 14	Oxygen, saturation
Column 15	Attenuation, optical beam transmission
Column 16	Fluorometer
Column 17	Number of observations

Processing Report (CTD-HE448-report.pdf):

This PDF document.

Station HE448/ Gear Abbr.	Date	Time	Position Latitude	Position Longitude	Depth [m]	File HE448_	Sensor pair		Temp		Sal		Trans		Fluor		Oxy		complete		Comments
							interp	erased	interp	erased	interp	erased	interp	erased	interp	erased	interp	erased	interp	erased	
0001-1	CTD/RO	11.07.2015	13:38	57° 56.01' N	7° 35.35' E	328.5	001a.*	1	9		9		9		9		9		45	0	
0001-4	CTD/RO	11.07.2015	14:14	57° 55.97' N	7° 33.89' E	302.6	001b.*	1											0	0	
0002-2	CTD/RO	11.07.2015	17:15	57° 56.73' N	7° 4.42' E	135.6	002a.*	1	3		3		3		3		3		15	0	
0002-6	CTD/RO	11.07.2015	17:46	57° 56.71' N	7° 3.26' E	134.1	002b.*	1	3		3		3		3		3		15	0	
0003-1	CTD/RO	12.07.2015	6:08	58° 2.98' N	6° 38.19' E	94.5	003a.*	1	4		4		4		4		4		20	0	
0003-5	CTD/RO/MIC	12.07.2015	6:44	58° 3.01' N	6° 37.17' E	158.1	003b.*	1											0	0	
0004-1	CTD/RO	12.07.2015	10:08	58° 14.66' N	6° 23.54' E	29.9	004a.*	1	2		2		2		2		2		6	0	
0004-6	CTD/RO	12.07.2015	10:40	58° 14.65' N	6° 23.55' E	31.8	004b.*	1	1		1		1		1		1		5	2	
0005-1	CTD/RO	12.07.2015	13:06	58° 22.99' N	5° 57.41' E	52.3	005a.*	1	2		2		2		2		2		10	0	
0005-5	CTD/RO	12.07.2015	13:41	58° 23.36' N	5° 56.98' E	55.4	005b.*	1	2		2		2		2		2		10	0	
0006-1	CTD/RO	12.07.2015	16:05	58° 34.73' N	5° 35.90' E	132.7	006a.*	1	3		3		3		3		3		15	0	
0006-5	CTD/RO	12.07.2015	16:35	58° 35.17' N	5° 35.98' E	90.1	006b.*	1	2		2		2		2		2		10	0	
0007-1	CTD/RO	13.07.2015	6:08	58° 48.84' N	5° 20.81' E	43.5	007a.*	1	3		3		3		3		3		7	0	
0007-4	CTD/RO	13.07.2015	6:35	58° 48.86' N	5° 21.01' E	41.7	007b.*	1	1		1		1		1		1		5	0	
0008-1	CTD/RO	13.07.2015	10:10	59° 3.69' N	5° 7.31' E	245.4	008a.*	1	4		4		4		4		4		20	0	
0008-6	CTD/RO	13.07.2015	10:47	59° 3.27' N	5° 7.61' E	236.2	008b.*	1	2		2		2		2		2		4	4	
0009-1	CTD/RO	13.07.2015	13:19	59° 18.57' N	4° 57.97' E	142.1	009a.*	1	4		4		4		4		4		20	0	
0009-5	CTD/RO	13.07.2015	13:46	59° 18.47' N	4° 57.71' E	138.6	009b.*	1											0	0	
0010-1	CTD/RO	13.07.2015	16:09	59° 32.84' N	5° 0.44' E	163.9	010a.*	1	5		5		5		5		5		25	0	
0010-5	CTD/RO	13.07.2015	16:40	59° 32.61' N	5° 0.53' E	160.6	010b.*	1	1		1		1		1		1		5	0	
0011-1	CTD/RO	14.07.2015	6:09	59° 48.86' N	4° 59.01' E	121.4	011a.*	1	3		3		3		3		3		15	0	
0011-4	CTD/RO	14.07.2015	6:37	59° 49.06' N	4° 59.09' E	117.1	011b.*	1	1		1		1		1		1		2	4	
0012-1	CTD/RO	14.07.2015	10:09	60° 4.93' N	4° 54.00' E	266.3	012a.*	1	9		9		9		9		9		45	0	
0012-6	CTD/RO	14.07.2015	10:40	60° 4.86' N	4° 53.92' E	269.6	012b.*	1	1		1		1		1		1		5	0	
0013-1	CTD/RO	14.07.2015	13:15	60° 20.62' N	4° 47.72' E	241.1	013a.*	1	7		7		7		7		7		36	0	
0013-5	CTD/RO	14.07.2015	13:42	60° 20.68' N	4° 47.35' E	249.6	013b.*	2											0	2	
0014-1	CTD/RO	14.07.2015	16:03	60° 36.19' N	4° 41.16' E	216.8	014a.*	1	11		11		11		11		11		55	0	
0014-5	CTD/RO	14.07.2015	16:35	60° 36.39' N	4° 41.51' E	194.3	014b.*	1	2		2		2		2		2		13	0	
0015-1	CTD/RO	15.07.2015	6:05	60° 52.29' N	4° 34.22' E	122.6	015a.*	1	1		1		1		1		1		5	0	
0015-5	CTD/RO	15.07.2015	6:40	60° 52.80' N	4° 34.51' E	98.9	015b.*	1	2		2		2		2		2		10	0	
0016-1	CTD/RO	15.07.2015	10:06	60° 57.87' N	4° 43.98' E	64.5	016a.*	1											0	0	
0016-5	CTD/RO	15.07.2015	10:34	60° 57.87' N	4° 43.92' E	60.3	016b.*	2	1		1		1		1		1		6	0	
0017-1	CTD/RO	15.07.2015	13:25	61° 7.22' N	5° 7.65' E	274.7	017a.*	1	9		9		9		9		9		45	0	
0017-6	CTD/RO	15.07.2015	13:56	61° 7.12' N	5° 7.49' E	298.8	017b.*	1											0	0	
0018-1	CTD/RO	15.07.2015	16:32	61° 7.67' N	5° 39.44' E	0.0	018a.*	1	17		17		17		17		17		85	0	
0018-5	CTD/RO	15.07.2015	17:05	61° 7.51' N	5° 39.30' E	0.0	018b.*	2	1		1		1		1		1		5	0	
0019-1	CTD/RO/MIC	16.07.2015	6:11	61° 7.37' N	6° 12.08' E	662.2	019a.*	1	15		15		15		15		15		75	0	
0019-5	CTD/RO	16.07.2015	6:47	61° 7.41' N	6° 11.86' E	638.8	019b.*	1											0	0	
0020-1	CTD/RO	16.07.2015	10:27	61° 10.94' N	6° 37.07' E	1089.8	020a.*	1	44		44		44		44		44		220	0	
0020-5	CTD/RO	16.07.2015	11:14	61° 10.87' N	6° 37.18' E	1091.7	020b.*	1											2	0	
																					different sensor pair values in mixed layer, different mixed layer depth compared to cast 1, temperature and salinity deleted; oxygen deleted

Figure 3: CTD data Processing Summary HE448
Page 7 of 11

Station HE448/ Gear Abbr.	Date	Time	Position Latitude	Position Longitude	Depth [m]	File HE448_ _	Sensor pair	Temp		Sal		Trans		Fluor		Oxy		complete interp_ erased	Comments	
								interp_ erased	erased	interp_ erased	erased	interp_ erased	erased	interp_ erased	erased	interp_ erased	erased			
0021-1	CTD/RO	16.07.2015	13:40	61° 7.60' N	7° 4.51' E	945.9	021a*	1	8	8	8	8	8	8	8	8	8	40	0	
0021-6	CTD/RO	16.07.2015	14:14	61° 7.53' N	7° 4.35' E	946.5	021b*	1	2	2	2	2	2	2	2	2	2	10	0	
0022-1	CTD/RO	16.07.2015	15:42	61° 8.35' N	7° 20.50' E	638.7	NIVA_001a*	1										0	0	
0023-1	CTD/RO	16.07.2015	16:47	61° 13.16' N	7° 22.49' E	616.7	022a*	1	17	17	17	17	17	17	17	17	17	85	0	
0023-5	CTD/RO	16.07.2015	17:20	61° 13.19' N	7° 22.44' E	618.5	022b*	1										0	0	
0024-1	CTD/RO	17.07.2015	6:21	61° 24.09' N	7° 25.78' E	273.4	023a*	1	4	4	4	4	4	4	4	4	4	20	0	
0024-5	CTD/RO	17.07.2015	6:58	61° 24.09' N	7° 25.82' E	338.4	023b*	2	2	2	2	2	2	2	2	2	2	4	0	oxygen deleted
0025-1	CTD/RO	17.07.2015	10:07	61° 28.84' N	7° 34.60' E	88.5	024a*	1	3	3	3	3	3	3	3	3	3	15	0	
0025-5	CTD/RO	17.07.2015	10:34	61° 28.79' N	7° 34.55' E	89.8	024b*	1	1	1	1	1	1	1	1	1	1	5	3	
0026-1	CTD/RO	17.07.2015	13:13	61° 18.04' N	7° 17.85' E	119.3	025a*	1										0	0	
0026-5	CTD/RO	17.07.2015	13:39	61° 18.04' N	7° 17.81' E	112.7	025b*	2	1	1	1	1	1	1	1	1	1	5	5	
0027-1	CTD/RO	17.07.2015	16:07	61° 9.10' N	7° 13.58' E	907.3	026a*	1	9	9	9	9	9	9	9	9	9	45	0	
0027-5	CTD/RO	17.07.2015	16:37	61° 9.08' N	7° 12.91' E	911.3	026b*	1	2	2	2	2	2	2	2	2	2	10	0	
0028-1	CTD/RO	18.07.2015	6:23	61° 9.27' N	6° 52.34' E	933.5	027a*	1										117	0	different sensor pair values in mixed layer, temperature and salinity deleted
0028-4	CTD/RO	18.07.2015	7:04	61° 9.32' N	6° 52.55' E	928.0	027b*	1										0	0	
0029-1	CTD/RO	18.07.2015	10:24	61° 6.18' N	6° 27.50' E	1172.4	028a*	1	61	61	61	61	61	61	61	61	61	305	0	
0029-6	CTD/RO	18.07.2015	11:07	61° 6.11' N	6° 27.23' E	1180.7	028b*	1	4	4	4	4	4	4	4	4	4	20	0	
0030-1	CTD/RO	18.07.2015	13:40	61° 8.32' N	5° 55.84' E	1264.5	029a*	1	35	35	35	35	35	35	35	35	35	175	0	
0030-5	CTD/RO	18.07.2015	14:18	61° 8.40' N	5° 55.62' E	1265.9	029b*	1										0	0	
0031-1	CTD/RO	19.07.2015	6:41	61° 2.97' N	5° 25.34' E	1243.1	030a*	1	49	49	49	49	49	49	49	49	49	245	0	
0031-4	CTD/RO	19.07.2015	7:26	61° 2.88' N	5° 25.63' E	1245.1	030b*	1	1	1	1	1	1	1	1	1	1	5	0	
0032-1	CTD/RO	19.07.2015	10:07	61° 2.63' N	4° 55.81' E	250.1	031a*	1	8	8	8	8	8	8	8	8	8	40	0	
0032-5	CTD/RO	19.07.2015	10:38	61° 2.61' N	4° 55.72' E	248.5	031b*	1										0	0	different sensor pair values in mixed layer, temperature and salinity deleted
0033-1	CTD/RO	19.07.2015	13:15	60° 56.71' N	4° 31.72' E	181.4	032a*	1										30	0	different sensor pair values in mixed layer, temperature and salinity deleted
0033-4	CTD/RO	19.07.2015	13:40	60° 56.78' N	4° 31.77' E	179.0	032b*	2										6	0	different sensor pair values in mixed layer, temperature and salinity deleted
0034-1	CTD/RO	19.07.2015	16:06	61° 7.22' N	4° 28.24' E	165.8	033a*	1	4	4	4	4	4	4	4	4	4	20	0	
0034-5	CTD/RO	19.07.2015	16:32	61° 7.08' N	4° 28.37' E	152.8	033b*	1	1	1	1	1	1	1	1	1	1	5	0	
0035-1	CTD/RO	20.07.2015	6:06	61° 23.14' N	4° 32.85' E	117.7	034a*	1	4	4	4	4	4	4	4	4	4	20	0	
0035-4	CTD/RO	20.07.2015	6:33	61° 23.04' N	4° 32.90' E	115.4	034b*	2										0	0	
0036-1	CTD/RO	20.07.2015	10:19	61° 37.84' N	4° 34.31' E	242.5	035a*	1	2	2	2	2	2	2	2	2	2	10	0	
0036-6	CTD/RO	20.07.2015	10:49	61° 37.91' N	4° 34.12' E	266.7	035b*	1	1	1	1	1	1	1	1	1	1	5	0	
0037-1	CTD/RO	20.07.2015	13:45	61° 54.75' N	4° 44.66' E	60.0	036a*	1	2	2	2	2	2	2	2	2	2	10	0	
0037-5	CTD/RO	20.07.2015	14:08	61° 54.50' N	4° 44.36' E	44.7	036b*	1										0	0	
0038-1	CTD/RO	20.07.2015	16:30	62° 9.08' N	4° 59.83' E	231.8	037a*	1	8	8	8	8	8	8	8	8	8	40	0	
0038-5	CTD/RO	20.07.2015	16:56	62° 9.39' N	4° 59.72' E	212.5	037b*	1										0	0	
0039-1	CTD/RO	21.07.2015	6:02	62° 20.46' N	5° 21.56' E	50.3	038a*	2	5	5	5	5	5	5	5	5	5	25	0	
0039-4	CTD/RO	21.07.2015	6:25	62° 20.45' N	5° 21.66' E	56.2	038b*	1										0	0	
0040-1	CTD/RO	21.07.2015	8:48	62° 23.43' N	5° 34.02' E	114.7	038Aa*	1	4	4	4	4	4	4	4	4	4	20	0	

Figure 4: CTD data Processing Summary HE448 (continuation)

Station HE448/ Gear Abbr.	Date	Time	Position Latitude	Position Longitude	Depth [m]	File HE448_	Sensor pair	Temp		Sal		Trans		Fluor		Oxy		complete		Comments
								interp	erased	interp	erased	interp	erased	interp	erased	interp	erased	interp	erased	
0041-1	CTD/RO	22.07.2015	6:05	62° 26'78" N	5° 36'70" E	53.3	0388a.*	1	1	1	1	1	1	1	1	1	1	5	0	
0042-1	CTD/RO	22.07.2015	10:04	62° 25'25" N	5° 40'51" E	79.4	038Ca.*	1	3	3	3	3	3	3	3	3	3	15	0	
0042-5	CTD/RO	22.07.2015	10:28	62° 25'26" N	5° 40'35" E	90.1	038Cb.*	1	1	1	1	1	1	1	1	1	1	5	0	
0043-1	CTD/RO	22.07.2015	13:08	62° 28'26" N	5° 46'19" E	174.6	039a.*	1	5	5	5	5	5	5	5	5	5	25	0	
0043-5	CTD/RO	22.07.2015	13:38	62° 28'21" N	5° 46'27" E	168.3	039b.*	2	1	1	1	1	1	1	1	1	1	0	5	
0044-1	CTD/RO	22.07.2015	16:39	62° 42'97" N	6° 2'75" E	54.7	040a.*	1	6	7	7	7	7	7	7	7	7	19	0	
0044-5	CTD/RO	22.07.2015	17:05	62° 42'91" N	6° 2'84" E	55.4	040b.*	2	1	1	1	1	1	1	1	1	1	0	5	
0045-1	CTD/RO	23.07.2015	6:05	62° 51'92" N	6° 24'67" E	86.9	041a.*	1	4	3	3	3	3	3	3	3	3	10	0	
0045-4	CTD/RO	23.07.2015	6:29	62° 51'83" N	6° 24'67" E	94.1	041b.*	1	1	1	1	1	1	1	1	1	1	5	0	
0046-1	CTD/RO	23.07.2015	10:02	63° 0'28" N	6° 59'70" E	34.2	042a.*	1	2	3	3	3	3	3	3	3	3	11	0	
0046-6	CTD/RO	23.07.2015	10:27	63° 0'18" N	6° 59'77" E	30.5	042b.*	1										0	0	different salinity values in sensor pair, salinity deleted
0047-1	CTD/RO	23.07.2015	13:14	63° 11'47" N	7° 24'49" E	88.1	043a.*	1	1	1	1	1	1	1	1	1	1	5	0	
0047-5	CTD/RO	23.07.2015	13:36	63° 11'40" N	7° 24'48" E	97.3	043b.*	1	1	1	1	1	1	1	1	1	1	5	5	
0048-1	CTD/RO	23.07.2015	16:01	63° 23'53" N	7° 38'98" E	87.7	044a.*	1	2	3	3	3	3	3	3	3	3	11	0	
0048-5	CTD/RO	23.07.2015	16:27	63° 23'45" N	7° 38'82" E	63.5	044b.*	1	1	3	3	3	3	3	3	3	3	5	6	
0049-1	CTD/RO	24.07.2015	6:09	63° 33'67" N	8° 0'97" E	165.8	045a.*	1	6	6	6	6	6	6	6	6	6	30	0	
0049-4	CTD/RO	24.07.2015	6:34	63° 33'90" N	8° 0'28" E	177.1	045b.*	1										0	0	
0050-1	CTD/RO	24.07.2015	10:03	63° 46'59" N	8° 14'88" E	144.5	046a.*	1	4	4	4	4	4	4	4	4	4	20	0	
0050-5	CTD/RO	24.07.2015	10:30	63° 46'58" N	8° 14'60" E	159.5	046b.*	1										0	0	
0051-1	CTD/RO	24.07.2015	13:20	63° 57'68" N	8° 37'37" E	155.2	047a.*	2	4	4	4	4	4	4	4	4	4	17	0	
0051-5	CTD/RO	24.07.2015	13:42	63° 57'83" N	8° 37'04" E	171.6	047b.*	2	1	1	1	1	1	1	1	1	1	5	0	
0052-1	CTD/RO	24.07.2015	16:06	64° 1'63" N	8° 42'83" E	102.0	048a.*	1	10	11	11	11	11	11	11	11	11	27	0	
0053-4	CTD/RO	25.07.2015	6:06	64° 9'11" N	9° 1'73" E	113.4	049a.*	1										0	0	
0053-4	CTD/RO	25.07.2015	6:31	64° 9'16" N	9° 1'86" E	115.7	049b.*	1										0	0	
0054-1	CTD/RO	25.07.2015	10:09	64° 12'66" N	9° 32'36" E	221.9	050a.*	1	11	11	11	11	11	11	11	11	11	55	0	
0054-6	CTD/RO	25.07.2015	10:41	64° 12'65" N	9° 32'35" E	226.3	050b.*	1										0	0	
0055-1	CTD/RO	25.07.2015	13:19	63° 58'22" N	9° 23'97" E	376.2	051a.*	1	10	10	10	10	10	10	10	10	10	50	0	
0055-5	CTD/RO	25.07.2015	13:46	63° 58'06" N	9° 24'17" E	383.3	051b.*	1										0	0	
0056-1	CTD/RO	25.07.2015	16:11	63° 50'70" N	9° 1'15" E	158.8	052a.*	1	4	4	4	4	4	4	4	4	4	20	0	
0056-5	CTD/RO	25.07.2015	16:37	63° 50'78" N	9° 1'47" E	136.0	052b.*	1	2	2	2	2	2	2	2	2	2	0	10	
0057-1	CTD/RO	26.07.2015	6:03	63° 44'92" N	9° 8'02" E	225.9	053a.*	1	4	4	4	4	4	4	4	4	4	20	0	
0057-4	CTD/RO	26.07.2015	6:25	63° 44'99" N	9° 7'96" E	221.4	053b.*	1	3	2	3	2	3	2	3	2	3	15	10	
0058-1	CTD/RO	26.07.2015	10:07	63° 36'59" N	9° 17'55" E	384.5	054a.*	1	15	15	15	15	15	15	15	15	15	75	0	
0058-5	CTD/RO	26.07.2015	10:32	63° 36'68" N	9° 17'55" E	389.7	054b.*	2	1	1	1	1	1	1	1	1	1	2	0	
0059-1	CTD/RO	26.07.2015	13:10	63° 36'76" N	9° 31'13" E	344.4	055a.*	1	14	14	14	14	14	14	14	14	14	70	0	
0059-4	CTD/RO	26.07.2015	13:32	63° 36'78" N	9° 31'30" E	346.1	055b.*	2										0	0	
0060-1	CTD/RO	26.07.2015	16:03	63° 36'25" N	9° 48'49" E	575.4	056a.*	1	5	5	5	5	5	5	5	5	5	25	0	
0060-4	CTD/RO	26.07.2015	16:33	63° 36'27" N	9° 48'62" E	575.8	056b.*	2	1	1	1	1	1	1	1	1	1	5	0	
0061-1	CTD/RO	27.07.2015	6:08	63° 30'57" N	9° 53'53" E	533.7	057a.*	1	16	16	16	16	16	16	16	16	16	80	0	
0061-4	CTD/RO	27.07.2015	6:40	63° 30'82" N	9° 53'28" E	537.8	057b.*	1										0	0	
0062-2	CTD/RO	27.07.2015	10:50	63° 29'68" N	10° 12'44" E	498.3	058a.*	1	12	13	13	13	13	13	13	13	13	61	0	
0062-6	CTD/RO	27.07.2015	11:14	63° 29'67" N	10° 12'40" E	498.1	058b.*	1										0	0	
0063-1	CTD/RO	27.07.2015	13:08	63° 34'15" N	10° 27'24" E	286.1	059a.*	1	11	11	11	11	11	11	11	11	11	55	0	

Figure 5: CTD data Processing Summary HE448 (continuation)

Station HE448/ Gear Abbr.	Date	Time	Position Latitude	Position Longitude	Depth [m]	File HE448_	Sensor pair	Temp		Sal		Trans		Fluor		Oxy		Comments	
								interp	erased	interp	erased	interp	erased	interp	erased	interp	erased	complete	erased
0063-5 CTD/RO	27.07.2015	13:34	63° 34.03' N	10° 26.94' E	280.8	059b.*	2	2	2	2	2	2	2	2	2	2	2	10	0
0064-1 CTD/RO	27.07.2015	16:08	63° 39.57' N	10° 45.81' E	164.4	060a.*	1	2	2	2	2	2	2	2	2	2	2	10	0
0064-5 CTD/RO	27.07.2015	16:33	63° 39.46' N	10° 45.66' E	195.2	060b.*	1	1	1	1	1	1	1	1	1	1	1	5	0
0065-1 CTD/RO	28.07.2015	6:08	63° 44.86' N	11° 6.19' E	421.8	061a.*	1	10	10	10	10	10	10	10	10	10	10	50	0
0065-4 CTD/RO	28.07.2015	6:41	63° 44.74' N	11° 6.31' E	421.1	061b.*	2	1	1	1	1	1	1	1	1	1	1	5	0
0066-3 CTD/RO	28.07.2015	11:02	63° 49.43' N	11° 22.63' E	344.2	062a.*	1	5	5	5	5	5	5	5	5	5	5	25	0
0066-8 CTD/RO	28.07.2015	11:30	63° 49.41' N	11° 22.83' E	335.6	062b.*	1	1	1	1	1	1	1	1	1	1	1	0	0
0067-1 CTD/RO	28.07.2015	13:08	63° 48.80' N	11° 6.96' E	114.3	063a.*	1	4	4	4	4	4	4	4	4	4	4	20	0
0067-5 CTD/RO	28.07.2015	13:27	63° 48.81' N	11° 6.88' E	114.8	063b.*	1	1	1	1	1	1	1	1	1	1	1	0	0
0068-1 CTD/RO	28.07.2015	16:06	63° 45.23' N	10° 59.26' E	415.5	064a.*	1	10	10	10	10	10	10	10	10	10	10	50	0
0068-5 CTD/RO	28.07.2015	16:33	63° 45.00' N	10° 59.19' E	422.3	064b.*	1	1	1	1	1	1	1	1	1	1	1	5	0
							607	20	616	20	635	8	635	8	634	9	3127	65	

Figure 6: CTD data Processing Summary HE448 (continuation)
Page 10 of 11

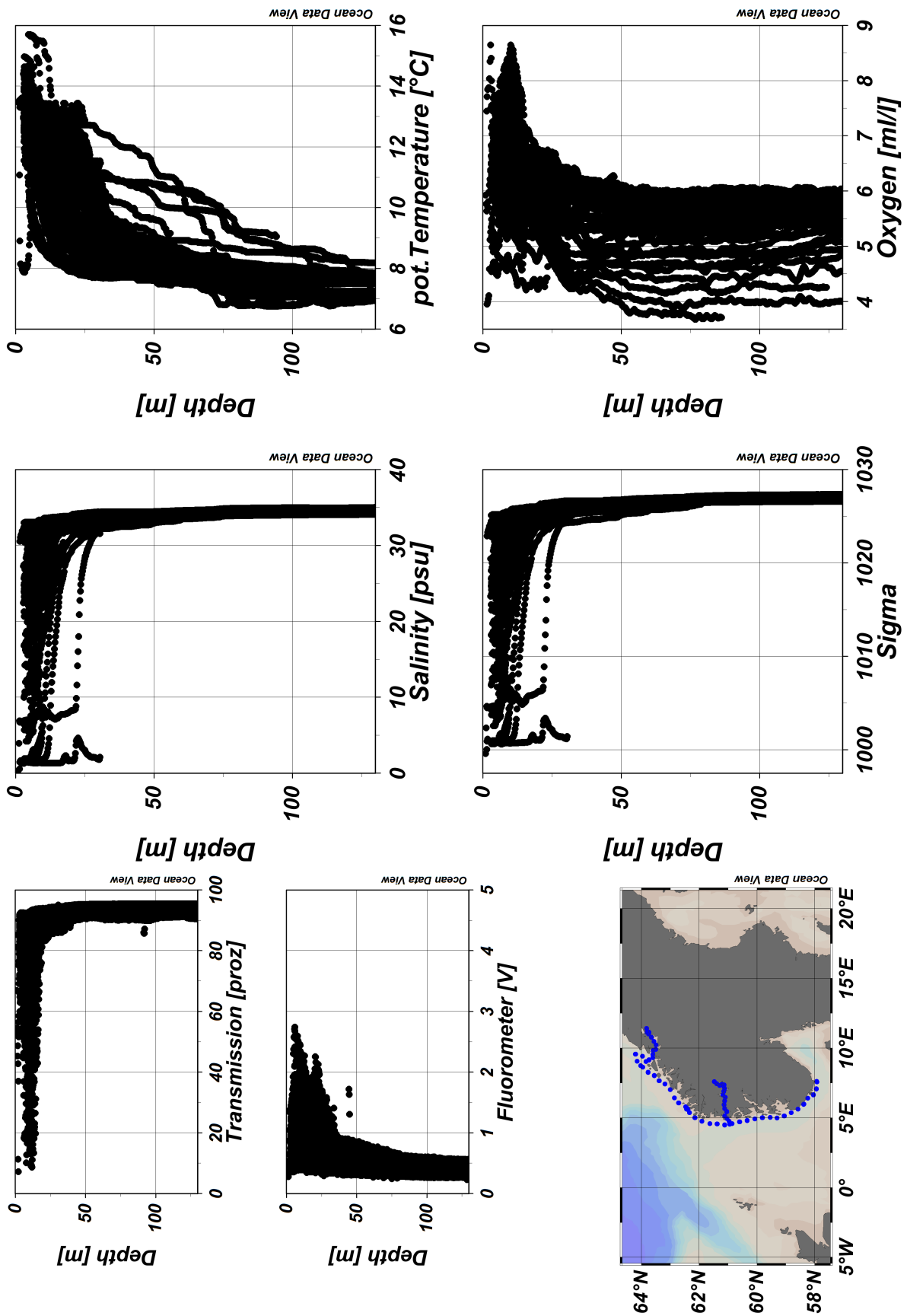


Figure 7: ODV Screenshot of HE448 CTD data
Page 11 of 11