



# Brief communication: Increasing shortwave absorption over the Arctic Ocean is not balanced by trends in the Antarctic

Christian Katlein<sup>1</sup>, Stefan Hendricks<sup>1</sup>, and Jeffrey Key<sup>2</sup>

<sup>1</sup>Alfred-Wegener-Institut Helmholtz-Zentrum für Polar- und Meeresforschung, 27570 Bremerhaven, Germany

<sup>2</sup>Center for Satellite Applications and Research, NOAA/NESDIS, Madison, Wisconsin, USA

Correspondence to: Christian Katlein (christian.katlein@awi.de)

Received: 5 December 2016 – Discussion started: 2 January 2017

Revised: 29 July 2017 – Accepted: 1 August 2017 – Published: 7 September 2017

**Abstract.** On the basis of a new, consistent, long-term observational satellite dataset we show that, despite the observed increase of sea ice extent in the Antarctic, absorption of solar shortwave radiation in the Southern Ocean poleward of 60° latitude is not decreasing. The observations hence show that the small increase in Antarctic sea ice extent does not compensate for the combined effect of retreating Arctic sea ice and changes in cloud cover, which both result in a total increase in solar shortwave energy deposited into the polar oceans.

## 1 Introduction

Changes in the Arctic and Antarctic cryosphere have been continuously monitored by different satellite programs since the 1970s. Arctic sea ice is becoming thinner (Haas et al., 2008) and younger (Maslanik et al., 2007) coupled with a decline in its extent (Serreze et al., 2007; Stroeve et al., 2012). This leads to a decrease in area-average sunlight reflection and thus to higher energy absorption in the Arctic Ocean (Perovich et al., 2011; Nicolaus et al., 2012). While some areas in Antarctica have also experienced a reduction of the sea ice cover, a modest overall gain of sea ice area has been observed in the Southern Hemisphere (Cavalieri et al., 1997; Stammerjohn et al., 2012), though there is some uncertainty in the magnitude of the trend (Eisenman et al., 2014). How these opposing trends relate to each other on a global scale is governed by a multitude of factors, such as the different latitudinal position of the ice cover and constraints by land masses, significant differences in the physical properties of the ice surface, and different forcing mechanisms from lower

latitudes (Meehl et al., 2016). A particular problem in relating Arctic and Antarctic trends and understanding their global impacts is the lack of a long-term, consistent observational dataset covering both poles.

The increased absorption of sunlight due to the loss of sea ice results in ocean warming, more ice loss, a decrease in albedo, and a further increase in absorbed sunlight. This is known as the ice–albedo feedback (Curry et al., 1995), a critical process in the global shortwave energy budget. Most of this added heat will be lost due to increased longwave emission during winter and will not be carried on into the next year. Especially in the Arctic, a longer sea ice melt season (Markus et al., 2009), thinner ice (Haas et al., 2008), and increased melt pond coverage (Rösel and Kaleschke, 2012) lead to increasing solar shortwave energy deposition in the ice–ocean system (Nicolaus et al., 2012), adding to the increase in absorption due to decreasing sea ice extent (Pistone et al., 2014). However, surface characteristics of Antarctic sea ice are less affected by global climate change (Allison et al., 1993; Brandt et al., 2005; Laine, 2008). Antarctic sea ice is mainly melting from below as the ice drifts away from the continent into warmer circumpolar waters, in contrast to the surface melting induced by melt ponding on Arctic sea ice. Therefore, sea ice extent losses in the Arctic are most pronounced during the Northern Hemisphere summer. In the Antarctic, the increasing extent of Antarctic sea ice is observed during the Southern Hemisphere winter, when the impact of sea ice cover on the shortwave energy balance is weaker.

Here we evaluate observations of the combined effect of different radiative processes in both hemispheres on the shortwave energy budget of the polar oceans. Our goal is to

determine to what extent the increased absorption of solar shortwave energy caused by losses and other changes in Arctic summer sea ice are offset by potentially decreased absorption due to observed increases of sea ice extent in the Antarctic. The recently published Advanced Very High Resolution Radiometer (AVHRR) Polar Pathfinder – Extended (APP-x) dataset provides a novel tool to investigate this question on the global scale. It provides surface radiative properties and fluxes consistently derived twice daily (high and low sun) for both polar regions beginning in 1982 (Key et al., 2016). Its great advantage compared to earlier, individual products based on AVHRR data is that the integrated dataset inherently takes into account changes in cloud cover and albedo changes of various sources, allowing us to evaluate the actual shortwave energy deposition changes in the oceans poleward of 60° latitude. We calculated monthly averaged shortwave radiative fluxes into the ice–ocean system to estimate the partitioning of absorbed shortwave energy between sea ice and the unfrozen ocean surface.

## 2 Methods

The results presented here are based on version 1.0 of the AVHRR APP-x data. APP-x contains twice-daily data of many surface, cloud, and radiative properties retrieved at high-sun and low-sun times (04:00 and 14:00 local solar time for the Arctic; 02:00 and 14:00 for the Antarctic) from satellite data using a suite of algorithms and a radiative transfer model (Key et al., 2016). All variables are derived from the same set of satellite radiances, allowing an integrated view on the effects of sea ice changes. We use the variables ice thickness, surface albedo, cloud cover, and downwelling shortwave radiation at the surface. The APP-x record begins in 1982 and continues to the present day, though version 1.0 used in this study covers the period 1982–2014. Through validation studies, the APP-x variables used here have been determined to be of sufficient accuracy to be considered as climate data record variables. APP-x shortwave fluxes have been validated against observations from the SHEBA ice camp and the CERES satellite product (Riihelä et al., 2017). Details on the retrieval of the variables can be found in the Climate Algorithm Theoretical Basis Document ([https://www1.ncdc.noaa.gov/pub/data/sds/cdr/CDRs/AVHRR\\_Extended\\_Polar\\_Pathfinder/AlgorithmDescription\\_01B-24b.pdf](https://www1.ncdc.noaa.gov/pub/data/sds/cdr/CDRs/AVHRR_Extended_Polar_Pathfinder/AlgorithmDescription_01B-24b.pdf), Key and Wang, 2015). APP-x utilizes the Near-real-time Ice and Snow Extent (NISE) product from the National Snow and Ice Data Center (Boulder, Colorado, USA) for surface type identification.

The energy flux absorbed by the surface was calculated as

$$E = E_{\text{down}} \cdot (1 - \alpha) \quad (1)$$

and multiplied by 12 h and the grid cell size to obtain the total amount of absorbed energy, where  $E_{\text{down}}$  inherently accounts for cloud cover. All grid cells with ice thickness greater than

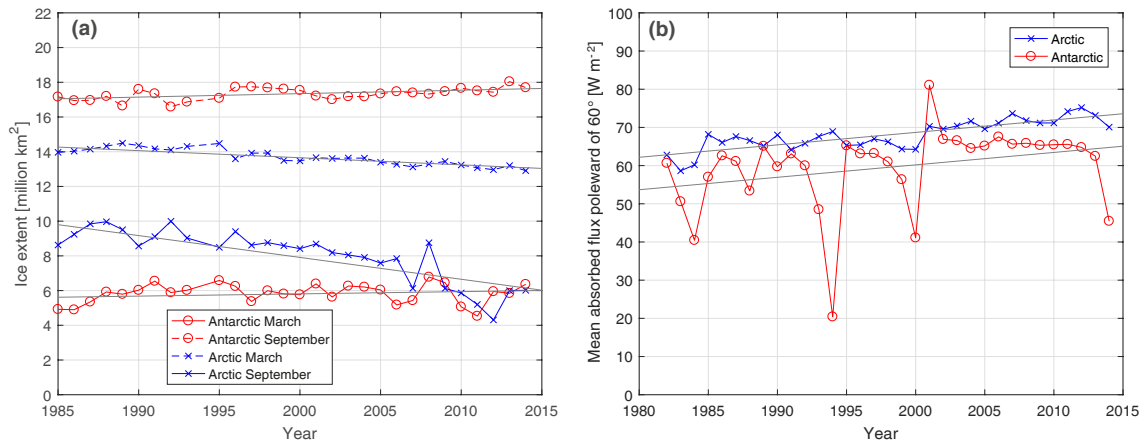
0 were considered as ice covered. The APP-x data product does not contain a separate field for ice concentration, but ice thickness is only calculated for cells with an ice concentration > 15 % in the NISE product. Sea ice extent was calculated as the number of ice-covered grid cells multiplied by the cell size (25 × 25 km). This yields slightly larger numbers than comparable analyses on the direct basis of passive microwave sea ice concentration products with higher resolution, but the magnitude of changes proved to be unaffected.

Shortwave energy fluxes were calculated for the twice-daily data and averaged over each month to reduce the influence of retrieval errors and intermittent gaps in the data. For the calculation of total absorbed energy, twice-daily data were summed up to monthly values. For grid cells with invalid retrievals due to low light during winter, shortwave fluxes were set to 0, and the albedo was set to 1. Monthly data of average energy flux and total absorbed energy were then used for annual and long-term averages as well as for time series analysis. Data for the year 1994 were excluded from time series analysis due to a significant gap in the observations. Trends were calculated through linear regression using the MATLAB curve-fitting toolbox. All trends presented as significant have confidence levels above 95 %. The given error intervals for trends are 95 % confidence intervals.

## 3 Results

An analysis of the dataset revealed a decrease in September sea ice extent of  $-0.126(\pm 0.03)$  million km<sup>2</sup> year<sup>-1</sup> for the Northern Hemisphere and an insignificant increase of  $0.012(\pm 0.02)$  million km<sup>2</sup> year<sup>-1</sup> in the Southern Hemisphere summer in March (Fig. 1a). Antarctic sea ice extent increased  $0.020(\pm 0.01)$  million km<sup>2</sup> year<sup>-1</sup> in September during Southern Hemisphere winter, while winter sea ice loss in the Arctic is weaker in March with a loss of  $-0.041(\pm 0.01)$  million km<sup>2</sup> year<sup>-1</sup>. Arctic sea ice extent losses are thus 5 times larger in magnitude than the small increases in ice area in the Antarctic, leading to a combined total sea ice loss of  $-0.106$  million ( $\pm 0.03$ ) km<sup>2</sup> year<sup>-1</sup> in September and  $-0.028(\pm 0.025)$  million km<sup>2</sup> year<sup>-1</sup> in March. This reproduces the known global net loss of sea-ice-covered area during the last few decades (Stammerjohn and Smith, 1997; Stammerjohn et al., 2012; Stroeve et al., 2012). Thus, the slight gains in Antarctic sea ice area do not compensate for the areal loss of sea ice in the Arctic. Given the differences in the latitudinal distribution of Arctic and Antarctic sea ice, however, the impact of these changes on the absorption of solar radiation warrants further investigation.

The summer mean daytime albedo for ice-covered areas in the APP-x dataset was 0.34 for the Arctic (June–August) and 0.41 for the Antarctic (December–February), which compares well to earlier studies (Allison et al., 1993). The higher albedo of Antarctic sea ice may be caused mainly by a thicker



**Figure 1.** (a) Long-term trends of sea ice extent: temporal evolution of sea ice extent in Antarctica (red) and the Arctic (blue) for minimal (solid line) and maximal (dashed line) seasonal extent as derived from APP-x data. Grey lines indicate fitted linear trends. (b) Annual mean flux into ice–ocean system: shortwave radiative flux absorbed by the ice–ocean system poleward of 60° latitude in the Arctic (crosses) and Antarctic (circles).

snow cover with little surface melt and consequently the lack of meltwater pond formation. In accordance with the observed trend towards younger, predominantly seasonal Arctic sea ice with larger melt pond coverage, the APP-x dataset shows a decrease of the mean Arctic summer sea ice albedo, while in the Antarctic albedo trends show regional differences driven by the changes in ice concentration (Fig. 2). In this analysis of albedo trends, we only consider summer daytime albedos, as the albedos retrieved during wintertime are questionable due to low light levels and observation gaps. This does not significantly affect our analysis of energy fluxes, as the largest uncertainty in the albedo occurs with low fluxes, subsequently leading to a low energy flux uncertainty.

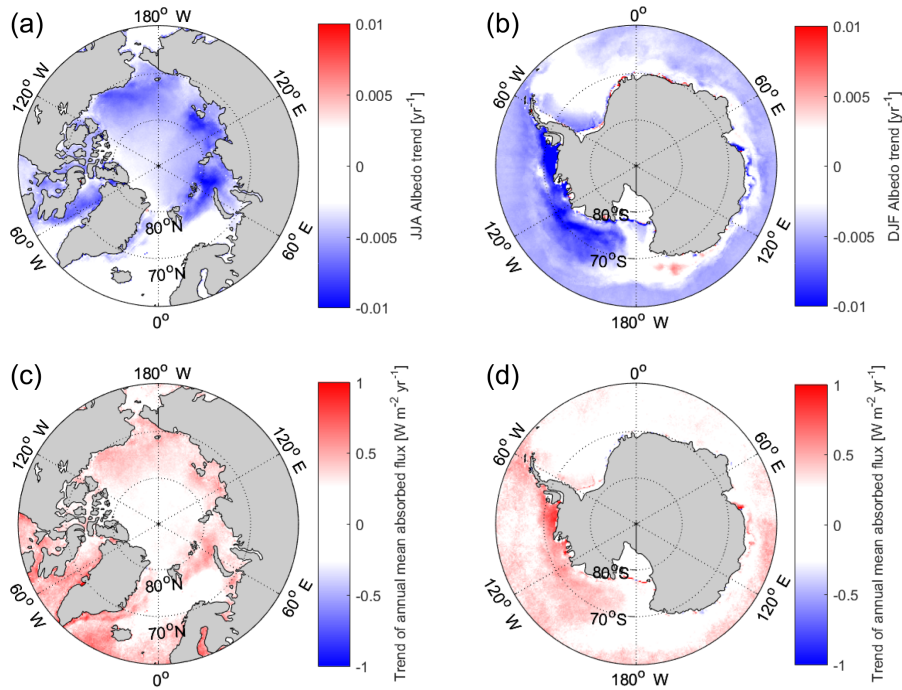
Antarctic sea ice exists mainly in the latitude zone between 55 and 77° S. In contrast, Arctic sea ice occupies the region between approximately 70 and 90° N. Due to its generally higher snow cover (Massom et al., 2001) and the 20 % higher albedo as well as its location at lower latitudes with higher shortwave insolation, the presence of sea ice does have a stronger impact on the local shortwave energy balance in the Antarctic. Mean annual shortwave energy uptake by the ice–ocean system poleward of 60° latitude was calculated twice daily from APP-x surface albedo and incoming solar radiation at the surface and averaged for each month. The use of these APP-x quantities inherently accounts for trends in cloud cover and surface albedo changes.

The mean annual shortwave energy flux into the ice–ocean system poleward of 60° accounts for 68 W m<sup>-2</sup> in the Arctic, and 60 W m<sup>-2</sup> in the Antarctic (Fig. 1b). Average Southern Hemisphere absorption shows high interannual variability throughout the satellite record, while the absorbed flux of the ice–ocean system in the Arctic clearly increased by 0.48 W m<sup>-2</sup> yr<sup>-1</sup>. While the trend in the absorption of solar

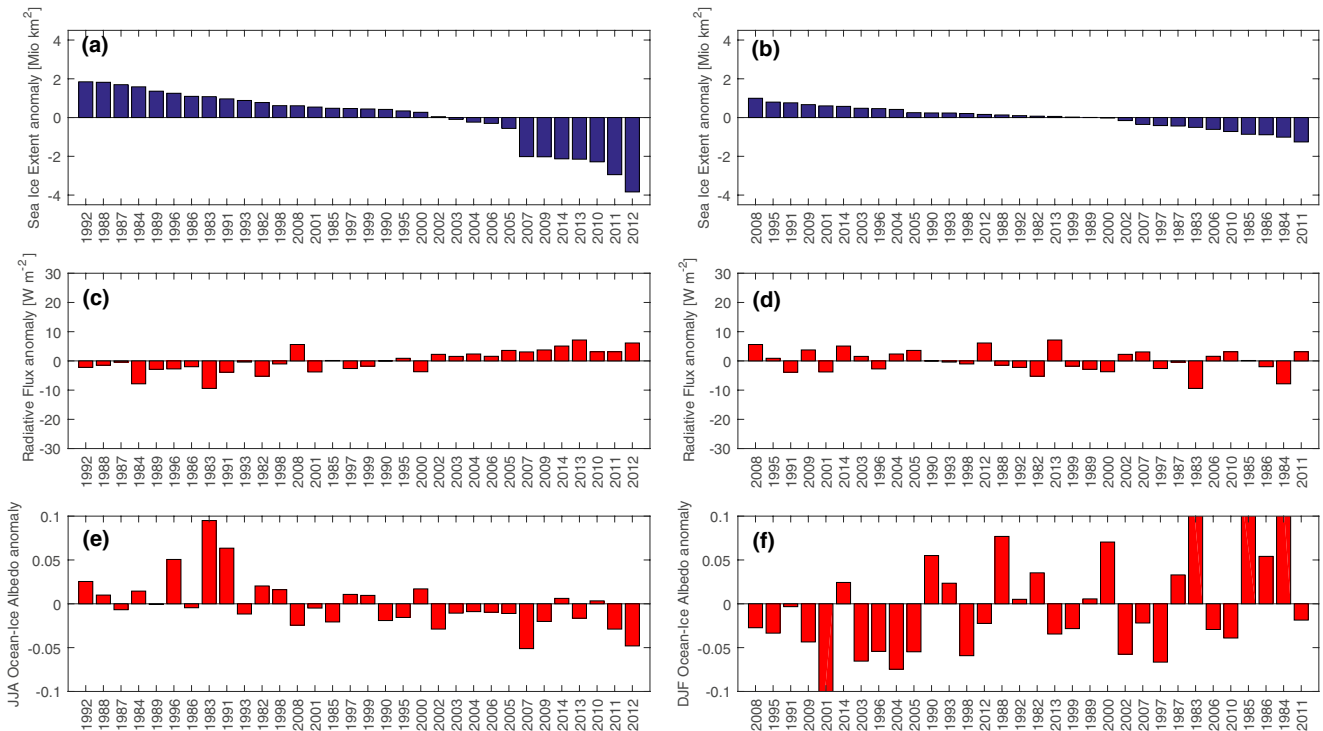
shortwave energy is more uniform across the Arctic Ocean due to uniform sea ice changes, there are large regional differences in the Antarctic (Fig. 2c, d). More solar energy is absorbed in the Bellingshausen and Amundsen seas, with smaller areas of decreasing energy absorption.

Combining the effects of cloud-cover-induced insolation changes, reduced sea ice extent, and a lower surface albedo, the total annual shortwave energy absorbed by the ice–ocean system north of 60° N increased at a rate of  $1.7(\pm 0.5) \times 10^{20}$  J yr<sup>-1</sup>. In the Southern Hemisphere energy absorption by the ice–ocean system south of 60° S also increased at a very similar rate of  $1.8(\pm 1.9) \times 10^{20}$  J yr<sup>-1</sup>, but due to the large interannual variability the trend is not statistically significant. Despite the increasing winter sea ice extent in the south, both hemispheres show a distinct increase in energy deposition in the ice–ocean system leading to ice melt and ocean warming. Increased ice extent in the Antarctic therefore does not decrease annual mean energy absorption as might be expected. An analysis of anomalies in sea ice extent, albedo, and shortwave energy deposition in the ice–ocean system shows that energy deposition is not directly correlated with the ice extent and albedo anomalies in general but can be offset by changes in cloud cover leading to increasing shortwave energy absorption in spite of albedo increases (Fig. 3).

In the Antarctic, the energy flux anomaly does not exhibit a strong relationship with ice extent anomalies overall (Fig. 3b, d), while in the Arctic anomalies in albedo and the resulting heat input into the ice–ocean system are much more closely related to the sea ice extent anomaly (Fig. 3a, c, e). Thus, in the context of the surface shortwave radiation balance, losses in Arctic sea ice and the resulting increase in solar energy absorption are not balanced by the moderate gains in sea ice extent in the Antarctic. On the global scale, changes



**Figure 2.** Spatial distribution of trends in surface albedo and overall energy deposition into the polar oceans: trends ( $\text{yr}^{-1}$ ) of mean daytime summer sea ice albedo in the Arctic (a) and Antarctic (b) and trends ( $\text{W m}^{-2} \text{yr}^{-1}$ ) of shortwave energy flux (c, d) absorbed by the ice–ocean system. The latter inherently includes both changes in albedo and cloud cover due to the nature of the APP-x dataset.



**Figure 3.** Anomaly of mean absorbed shortwave flux and surface albedo sorted from positive to negative sea ice extent anomaly: Arctic (a, c, e) and Antarctic (b, d, f) sea ice extent anomaly (a, b), annual anomaly of shortwave flux absorbed by the ice–ocean system poleward of  $60^\circ$  (c, d), and summer albedo anomaly (e, f).

in the shortwave energy partitioning in the polar oceans poleward of 60° latitude lead to a combined increased energy deposition of  $3.5(\pm 2.1) \times 10^{20} \text{ J yr}^{-1}$  comprised of positive energy absorption trends in both hemispheres despite moderate increases in Antarctic sea ice extent.

When extending our analysis from the oceans to all land and ocean areas poleward of 60° latitude, the result is similar with an increasing flux of  $0.3 \text{ W m}^{-2}$  per year absorbed by the planet's surface poleward of 60°. This trend is somewhat weaker than over the ocean alone, as changes in land cover properties are not as pronounced as changes in ice extent and properties. Still, changing snow cover and prolonged melting seasons cause more absorption of sunlight and further heating of the climate system.

#### 4 Conclusions

In conclusion, a consistent, long-term observational, satellite-based time series shows that changes in the shortwave energy budget caused by a decreasing Arctic sea ice cover are not balanced by the slight increases observed in Antarctic sea ice extent. Significant increases in Antarctic sea ice only occur during the Southern Hemisphere winter and thus have only a minor impact on the energy balance, while Arctic sea ice changes are accompanied by a spatially uniform decrease of sea ice albedo during the summer, further increasing the energy input to the northern polar ocean and thereby strengthening the ice–albedo feedback. This demonstrates the different roles that partitioning of solar shortwave radiation plays in the two very different sea ice zones of our planet. It is necessary to better understand the influence of the changes in different processes such as sea ice distribution, sea ice albedo, and cloud properties on the shortwave radiation budget in these two very different polar regions.

*Data availability.* The APP-x dataset is available online at <https://www.ncdc.noaa.gov/cdr/atmospheric/extended-avhrr-polar-pathfinder-app-x>. Correspondence and requests for materials should be addressed to [ckatlein@awi.de](mailto:ckatlein@awi.de) and to [jeff.key@noaa.gov](mailto:jeff.key@noaa.gov) concerning the APP-x dataset.

*Author contributions.* CK performed the calculations, prepared the figures, and wrote the text; SH had the initial idea for this study and contributed to the setup of the study; and JK contributed the APP-x data and provided insight into its use. All authors were involved in the writing of the manuscript.

*Competing interests.* The authors declare that they have no conflict of interest.

*Acknowledgements.* Christian Katlein is supported by the Helmholtz infrastructure initiative FRontiers in Arctic marine Monitoring (FRAM), and Stefan Hendricks received support from the European Space Agency. Stefan Hendricks was funded by the German Ministry of Economics and Technology (grant 50EE1008). We thank Xuanji Wang and Yinghui Liu of the Cooperative Institute for Meteorological Satellite Studies (CIMSS), University of Wisconsin–Madison, for their extensive work on the APP and APP-x climate data records, which was supported by the NOAA Climate Data Records Program. This study was funded by the Alfred-Wegener-Institut Helmholtz-Zentrum für Polar- und Meeresforschung. The views, opinions, and findings contained in this report are those of the authors and should not be construed as an official National Oceanic and Atmospheric Administration or U.S. Government position, policy, or decision.

The article processing charges for this open-access publication were covered by a Research Centre of the Helmholtz Association.

Edited by: Dirk Notz

Reviewed by: Sebastian Bathiany, Ian Eisenman, and one anonymous referee

#### References

- Allison, I., Brandt, R. E., and Warren, S. G.: East Antarctic sea ice: Albedo, thickness distribution, and snow cover, *J. Geophys. Res.-Oceans*, 98, 12417–12429, 1993.
- Brandt, R. E., Warren, S. G., Worby, A. P., and Grenfell, T. C.: Surface Albedo of the Antarctic Sea Ice Zone, *J. Climate*, 18, 3606–3622, 2005.
- Cavalieri, D. J., Gloersen, P., Parkinson, C. L., Comiso, J. C., and Zwally, H. J.: Observed Hemispheric Asymmetry in Global Sea Ice Changes, *Science*, 278, 1104–1106, 1997.
- Curry, J. A., Schramm, J. L., and Ebert, E. E.: Sea Ice-Albedo Climate Feedback Mechanism., *J. Climate*, 8, 240–247, 1995.
- Eisenman, I., Meier, W. N., and Norris, J. R.: A spurious jump in the satellite record: has Antarctic sea ice expansion been overestimated?, *The Cryosphere*, 8, 1289–1296, <https://doi.org/10.5194/tc-8-1289-2014>, 2014.
- Haas, C., Pfaffling, A., Hendricks, S., Rabenstein, L., Etienne, J.-L., and Rigor, I.: Reduced ice thickness in Arctic Transpolar Drift favors rapid ice retreat, *Geophys. Res. Lett.*, 35, L17501, <https://doi.org/10.1029/2008GL034457>, 2008.
- Key, J. and Wang, X.: Climate Algorithm Theoretical Basis Document, Extended AVHRR Polar Pathfinder (APP-x), NOAA/NESDIS Center for Satellite Applications and Research and the National Climatic Data Center, 85 pp., 2015.
- Key, J., Wang, X., Liu, Y., Dworak, R., and Letterly, A.: The AVHRR Polar Pathfinder Climate Data Records, *Remote Sensing*, 8, 197, <https://doi.org/10.3390/rs8030167>, 2016.
- Laine, V.: Antarctic ice sheet and sea ice regional albedo and temperature change, 1981–2000, from AVHRR Polar Pathfinder data, *Remote Sens. Environ.*, 112, 646–667, 2008.
- Markus, T., Stroeve, J. C., and Miller, J.: Recent changes in Arctic sea ice melt onset, freezeup, and melt sea-

- son length, *J. Geophys. Res.-Oceans*, 114, C12024, <https://doi.org/10.1029/2009JC005436>, 2009.
- Maslanik, J. A., Fowler, C., Stroeve, J., Drobot, S., Zwally, J., Yi, D., and Emery, W.: A younger, thinner Arctic ice cover: Increased potential for rapid, extensive sea-ice loss, *Geophys. Res. Lett.*, 34, L24501, <https://doi.org/10.1029/2007GL032043>, 2007.
- Massom, R. A., Eicken, H., Hass, C., Jeffries, M. O., Drinkwater, M. R., Sturm, M., Worby, A. P., Wu, X., Lytle, V. I., Ushio, S., Morris, K., Reid, P. A., Warren, S. G., and Allison, I.: Snow on Antarctic sea ice, *Rev. Geophys.*, 39, 413–445, 2001.
- Meehl, G. A., Arblaster, J. M., Bitz, C. M., Chung, C. T. Y., and Teng, H.: Antarctic sea-ice expansion between 2000 and 2014 driven by tropical Pacific decadal climate variability, *Nat. Geosci.*, 9, 590–595, <https://doi.org/10.1038/ngeo2751>, 2016.
- Nicolaus, M., Katlein, C., Maslanik, J., and Hendricks, S.: Changes in Arctic sea ice result in increasing light transmittance and absorption, *Geophys. Res. Lett.*, 39, L24501, <https://doi.org/10.1029/2012GL053738>, 2012.
- Perovich, D. K., Jones, K. F., Light, B., Eicken, H., Markus, T., Stroeve, J., and Lindsay, R.: Solar partitioning in a changing Arctic sea-ice cover, *Ann. Glaciol.*, 52, 192–196, 2011.
- Pistone, K., Eisenman, I., and Ramanathan, V.: Observational determination of albedo decrease caused by vanishing Arctic sea ice, *P. Natl. Acad. Sci. USA*, 111, 3322–3326, 2014.
- Riihelä, A., Key, J. R., Meirink, J. F., Kuipers Munneke, P., Palo, T., and Karlsson, K.-G.: An intercomparison and validation of satellite-based surface radiative energy flux estimates over the Arctic, *J. Geophys. Res.-Atmos.*, 122, 4829–4848, 2017.
- Rösel, A. and Kaleschke, L.: Exceptional melt pond occurrence in the years 2007 and 2011 on the Arctic sea ice revealed from MODIS satellite data, *J. Geophys. Res.*, 117, C05018, <https://doi.org/10.1029/2011JC007869>, 2012.
- Serreze, M. C., Holland, M. M., and Stroeve, J.: Perspectives on the Arctic's Shrinking Sea-Ice Cover, *Science*, 315, 1533–1536, 2007.
- Stammerjohn, S., Massom, R., Rind, D., and Martinson, D.: Regions of rapid sea ice change: An inter-hemispheric seasonal comparison, *Geophys. Res. Lett.*, 39, <https://doi.org/10.1029/2012GL050874>, 2012.
- Stammerjohn, S. E. and Smith, R. C.: Opposing Southern Ocean Climate Patterns as Revealed by Trends in Regional Sea Ice Coverage, *Climatic Change*, 37, 617–639, 1997.
- Stroeve, J. C., Serreze, M. C., Holland, M. M., Kay, J. E., Malanik, J., and Barrett, A. P.: The Arctic's rapidly shrinking sea ice cover: a research synthesis, *Climatic Change*, 110, 1005–1027, 2012.