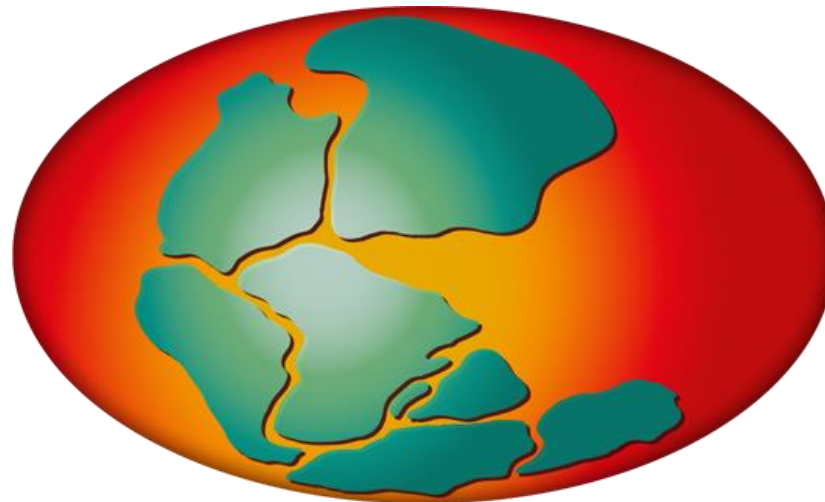
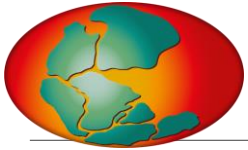


# PANGAEA Data Publisher for Earth & Environmental Science

## **SPP1158 – update 2019**



**Amelie Driemel, Stefanie Schumacher, Dana Ransby**  
Bremen, 26.09.2019

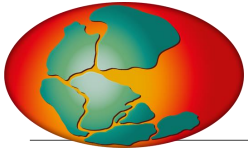


# PANGAEA - Why am I here?



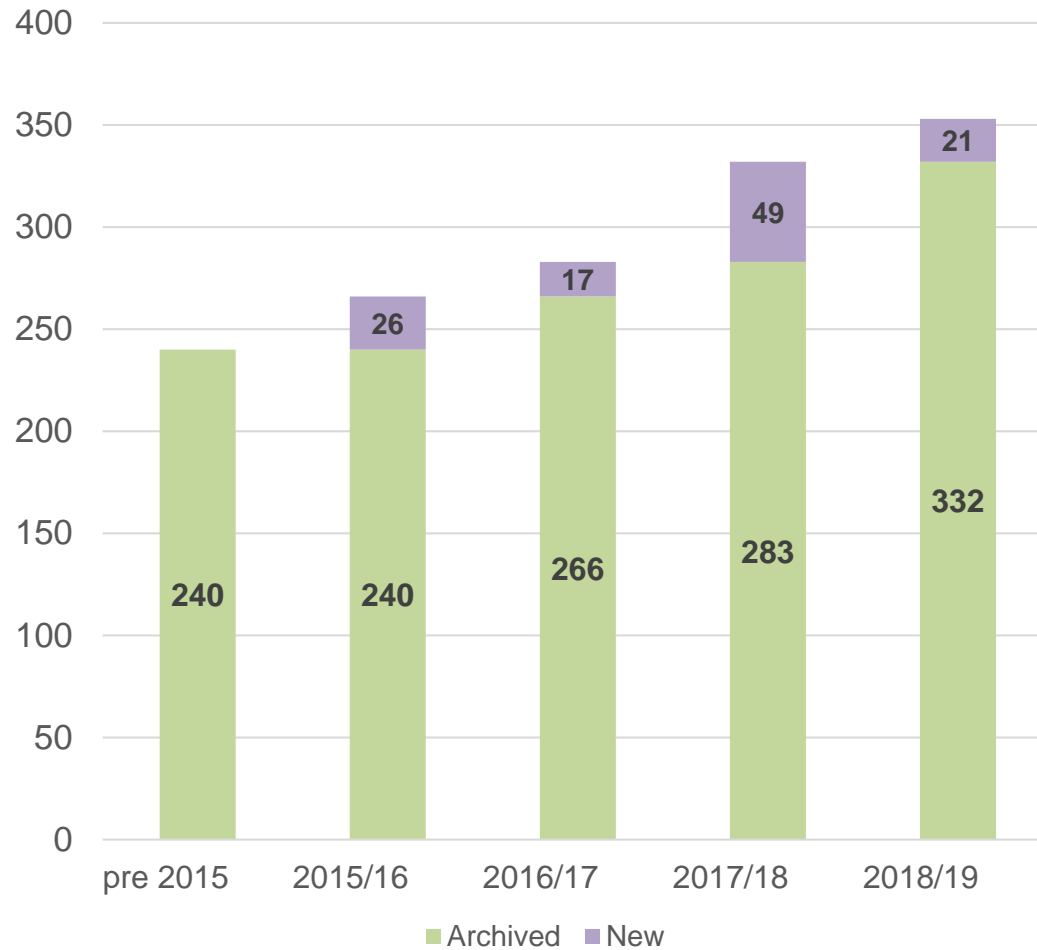
- PANGAEA is an open access Data Library and is the **designated database for SPP1158** (data + metadata!)
- 
- Your data are stored **georeferenced** in space and time
  - Your datasets receive a **citable and permanent DOI**
  - Your datasets can be **found** via the internet and can be **downloaded** from the PANGAEA web page (**moratorium possible!**)



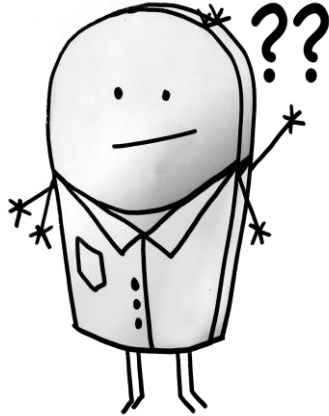


# SPP data in PANGAEA

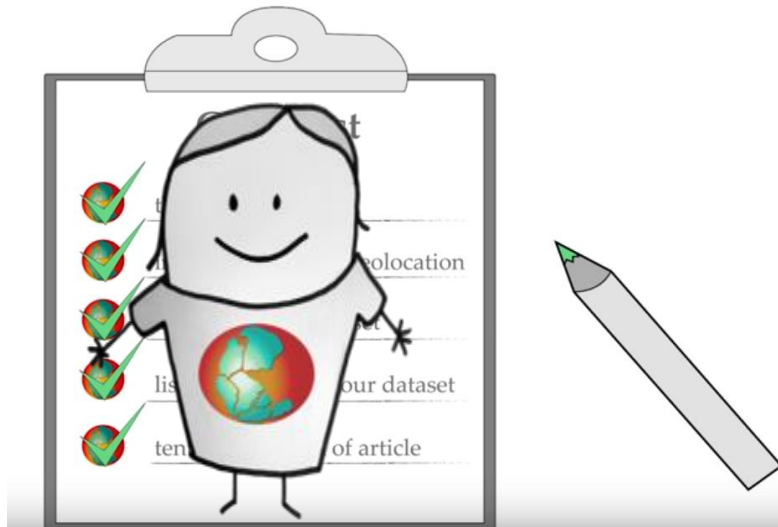
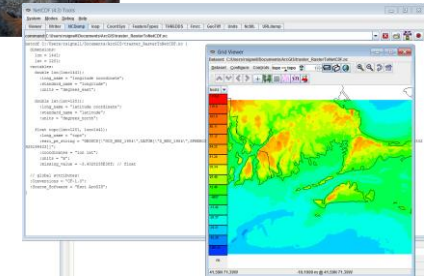
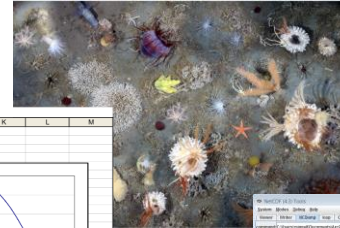




This is life..



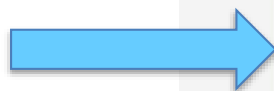
A	B	C	D	E	F	G	H	I	J	K	L	M
1	Lineareitung von P1100											
2	Bereich: 2000+0											
3		0.00407										
4	T in Grad Cel	RPM100	150	Ordnung	dB0	Tkorr1	dB1P2					
5	-200	18.52008	-200.196364	-0.196364	-200.00106	-0.00106	1.12366E-06					
6	-190	22.024803	-189.617985	0.382015	-189.996838	0.003162	9.9962E-06					
7	-180	27.066428	-179.124244	0.87979	-179.999303	0.004847	1.1506E-05					
8	-170	31.330499	-168.709961	1.206039	-169.996093	0.003907	1.5261E-05					
9	-160	35.643272	-158.370203	1.620791	-159.999599	0.001991	2.2231E-05					
10	-150	39.7231844	-148.190284	1.899791	-150.000207	-0.000207	4.1494E-06					
11	-140	43.6764344	-137.890763	2.104237	-140.000763	-0.000763	3.7491E-05					
12	-130	48.0047138	-127.752448	2.247562	-130.010243	-0.010243	0.0010482					
13	-120	52.1097991	-117.89639	2.33391	-120.019303	-0.019303	0.0019484					
14	-110	56.193506	-107.633892	2.366108	-110.018762	-0.018762	0.0028164					
15	-100	60.259584	-97.661488	2.346512	-100.018482	-0.018482	0.0034164					
16	-90	64.2995863	-87.7160043	2.2839957	-90.018253	-0.018252	0.0033552					
17	-80	68.3264995	-77.8344885	2.1758919	-80.0177897	-0.0177897	0.0031837					
18	-70	72.3454339	-67.8741181	2.0208819	-70.0163337	-0.0163337	0.0029252					
19	-60	76.3279436	-58.1625486	1.8374834	-60.0117033	-0.0117033	0.00319897					
20	-50	80.2602819	-48.387138	1.6158862	-50.0078415	-0.0078415	5.2439E-06					
21	-40	84.279652	-38.6470466	1.3529534	-40.0024709	-0.0024709	6.1358E-06					
22	-30	88.2716588	-28.8381183	1.060817	-30.9981138	0.0118862	3.3079E-05					
23	-20	92.1598884	-19.261488	0.7368812	-19.9950444	0.0049556	2.4568E-05					
24	-10	96.0589879	-9.61700465	0.38269595	-9.9943625	0.00564375	1.1802E-05					
25	0	100	0	0	0.00286603	0.00286603	7.0772E-06					
26							0.00218413					





**PANGAEA.**

Data Publisher for Earth & Environmental Science



**Submit  
Data**



## Welcome to PANGAEA Data Publisher

Welcome to PANGAEA® Data Publisher. PANGAEA is open to any project or individual scientist to archive and publish data. It is a designated archive for the journal Earth System Science Data (ESSD) and various journals related to earth system research.

ALL TOPICS ▾

measurement type, author name, project, taxa,...



TOPICS

MAP



F  
-  
J  
S  
U  
ir  
n  
d  
F  
M  
is  
d  
V  
C  
C  
S  
d  
C  
P  
tl  
d  
E  
N  
fi  
d  
D

## Create Issue



# Data submission form


Project **PANGAEA Data Archiving & Publication**

Issue Type **Data Submission**

Summary\*   
The summary (subject) is used as identifier in the further communication.

Author(s)\*   
Please, enter the author(s) (the principal investigators) for the data set(s) you want to submit.  
One author per line; example: *Smith, Joe Peter*

Title   
The title should ideally reflect what has been measured, observed, or calculated, when, where, and how.

Description   
  
ABSTRACT and/or further details describing the data.

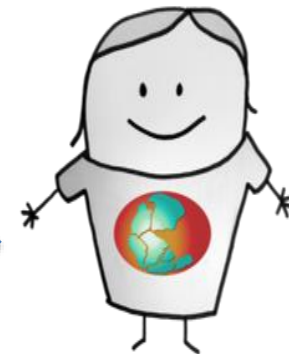
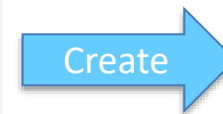
Keywords   
Separate keywords by comma or semicolon.

Attachment   
or

For larger files leave a corresponding note in the description - DATA FILE(S) ARE REQUIRED! For data submissions, read our format guide (<http://wiki.pangaea.de/wiki/Format>).

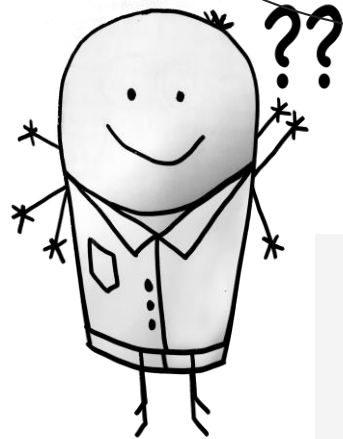
License\*   
General information on used licences can be found on the [Creative Commons](#) license pages. If you need help to choose the correct license for your dataset, you can use the [following page](#).

Labels   
Begin typing to find and create labels or press down to select a suggested label.  
Context of the data submission, e.g. PROJECT, institute, etc.



PANGAEA  
Data Curator





Oops, I do will  
 upload a new  
 version  
 Great, looks good,  
 please keep  
 moratorium until...

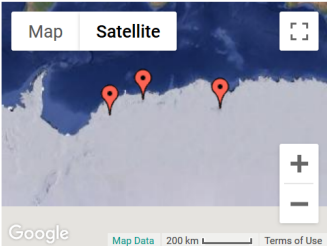


Looks good,  
 but it looks  
 very good!  
 I uploaded your  
 data, please  
 proof-read at ...



**Citation:** **Berg, Sonja (2018):** Radiocarbon ages of mumiyo deposits from Dronning Maud Land and Southern Prince Charles Mountains, East Antarctic. *Institute of Geology and Mineralogy, University of Cologne, PANGAEA*, <https://doi.pangaea.de/10.1594/PANGAEA.895375> (dataset in review)

[Facebook](#) [Twitter](#) [Show Map](#) [Google Earth](#)



**Abstract:** Radiocarbon dating was performed on different mumiyo deposits from western and central Dronning Maud Land and the Southern Prince Charles Mountains (East Antarctica). Top and basal ages were obtained to identify the temporal ranges of the deposits. Some deposits were analyzed in more detail by measuring samples from different depths along vertical profiles.

**Project(s):** [Priority Programme 1158 Antarctic Research with Comparable Investigations in Arctic Sea Ice Areas](#) (DFG-SPP1158) 🔍

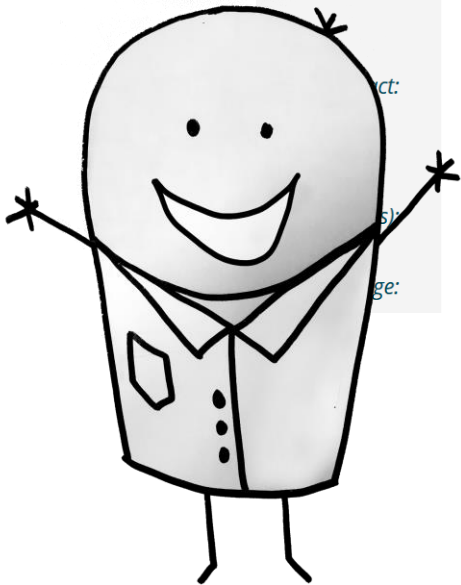
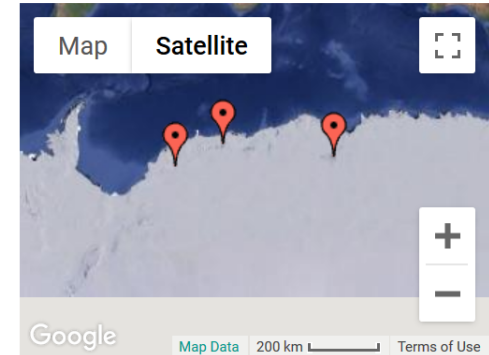
**Coverage:** *Median Latitude:* -71.922611 \* *Median Longitude:* 16.369911 \* *South-bound Latitude:* -74.553300 \* *West-bound Longitude:* -11.273300 \* *North-bound Latitude:* -71.286700 \* *East-bound Longitude:* 20.200000



Citation:

**Berg, Sonja (2018):** Radiocarbon ages of mumiyo deposits from Dronning Maud Land and Southern Prince Charles Mountains, East Antarctic. *Institute of Geology and Mineralogy, University of Cologne, PANGAEA*, <https://doi.pangaea.de/10.1594/PANGAEA.895375> (dataset in review)

Facebook Twitter Show Map Google Earth



Radiocarbon dating was performed on different mumiyo deposits from western and central Dronning Maud Land and the Southern Prince Charles Mountains (East Antarctica). Top and basal ages were obtained to identify the temporal ranges of the deposits. Some deposits were analyzed in more detail by measuring samples from different depths along vertical profiles.

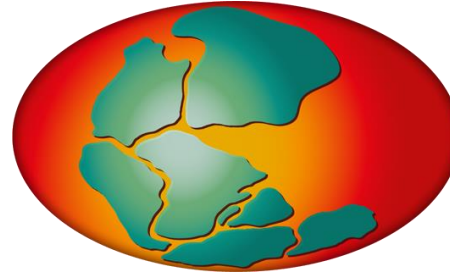
**Priority Programme 1158 Antarctic Research with Comparable Investigations in Arctic Sea Ice Areas** (DFG-SPP1158)

Median Latitude: -71.922611 \* Median Longitude: 16.369911 \* South-bound Latitude: -74.553300 \* West-bound Longitude: -11.273300 \* North-bound Latitude: 74.922611 \* East-bound Longitude: 16.369911

Your dataset in PANGAEA is **in review and access restricted** until you are completely happy with it!

(also possible until final publication of your manuscript)

Thanks!



<http://www.pangaea.de/submit/>

or E-Mail to: [amelie.driemel@awi.de](mailto:amelie.driemel@awi.de)

