



A dataset on trophic modes of aquatic protists

Lisa K. Schneider^{‡,§}, Konstantinos Anestis[|], Joost Mansour[¶], Anna A. Anschütz^{#,§}, Nathalie Gypens[§],
Per J Hansen[□], Uwe John^{|,«}, Kerstin Klemm[!], Jon Lapeya Martin[§],
Nikola Medic[□], Fabrice Not[»], Willem Stolte[‡]

[‡] Deltares, Delft, Netherlands

[§] Université Libre de Bruxelles, Bruxelles, Belgium

[|] Alfred-Wegener-Institute Helmholtz Center for Polar and Marine Research, Bremerhaven, Germany

[¶] Sorbonne University, CNRS, Roscoff, France

[#] School of Earth and Ocean Sciences, Cardiff University, Cardiff, United Kingdom

[□] Marine Biological Laboratory, University of Copenhagen, Copenhagen, Denmark

[«] Helmholtz Institute for Functional Marine Biodiversity, Oldenburg, Germany

[»] CNRS, Roscoff, France

Corresponding author: Lisa K. Schneider (lisa.schneider@deltares.nl)

Academic editor: Anne Thessen

Received: 17 Jul 2020 | Accepted: 08 Sep 2020 | Published: 23 Oct 2020

Citation: Schneider LK, Anestis K, Mansour J, Anschütz AA, Gypens N, Hansen PJ, John U, Klemm K, Martin JL, Medic N, Not F, Stolte W (2020) A dataset on trophic modes of aquatic protists. Biodiversity Data Journal 8: e56648. <https://doi.org/10.3897/BDJ.8.e56648>

Abstract

Background

An important functional trait of organisms is their trophic mode. It determines their position within food webs, as well as their function within an ecosystem. For the better part of the 20th century, aquatic protist communities were thought to consist mainly of producers (phytoplankton) and consumers (protozooplankton). Phytoplankton cover their energy requirements through photosynthesis (phototrophy), while protozooplankton graze on prey and organic particles (phagotrophy). However, over the past decades, it was shown that another trophic group (mixoplankton) comprise a notable part of aquatic protist communities. Mixoplankton employ a third trophic mode by combining phototrophy and phagotrophy (mixotrophy). Due to the historical dichotomy, it is not straightforward to gain adequate and correct information on the trophic mode of aquatic protists. Long hours of literature research or expert knowledge are needed to correctly assign trophic modes. Additionally, aquatic protists also have a long history of undergoing taxonomic changes

which make it difficult to compare past and present literature. While WoRMS, the World Register of Marine Species, keeps track of the taxonomic changes and assigns each species a unique AphiaID that can be linked to its various historic and present taxonomic hierarchy, there is currently no machine-readable database to query aquatic protists for their trophic modes.

New information

This paper describes a dataset that was submitted to WoRMS and links aquatic protist taxa, with a focus on marine taxa, to their AphiaID and their trophic mode. The bulk of the data used for this dataset stems from (routine) monitoring stations in the North Sea and the Baltic Sea. The data were augmented and checked against state-of-the-art knowledge on mixoplankton taxa by consulting literature and experts. Thus, this dataset provides a first attempt to make the trophic mode of aquatic protists easily accessible in both a human- and machine-readable format.

Keywords

aquatic protists, phytoplankton, protozooplankton, mixoplankton, trophic mode, functional traits, functional biodiversity

Introduction

Protists (i.e. unicellular eukaryotes) form the base of aquatic ecosystems by providing food for higher trophic levels. Even though protist communities are so important for the trophic functioning of aquatic ecosystems, the trophic diversity within those protist communities is not always clear. For the better part of the 20th century, aquatic protist communities were divided into producers, the phytoplankton and grazers, the (proto)zooplankton (Flynn et al. 2013). Over the past decade, there has been an effort to reshape the traditional dichotomy of aquatic protist communities by taking mixotrophic protists into account (Mitra et al. 2016). Mixotrophic protists can function both as producers and grazers and, recently, the term mixoplankton has been suggested to describe this group (Flynn et al. 2019).

However, taking the correct trophic mode into account is still a challenge. Due to the historical bias, most aquatic protists are still by default categorised as either phytoplankton or protozooplankton. Intensive experimental work is required to determine mixotrophy in protists. While, in the past years, quite a few papers were published that contained lists of currently-proven marine mixoplankton (Faure et al. 2019, Leles et al. 2017, Leles et al. 2019), there is no database available which allows the trophic mode of aquatic protists to be queried. This makes it very time-consuming to take the trophic mode into account for large data-driven approaches on aquatic protist communities. A further complication is added through the frequent taxonomic changes within the protist community which make it difficult to compare literature references.

This dataset provides information on the trophic mode of aquatic protists and links them to the WoRMS database that keeps track of taxonomic name changes by using a unique species identifier, the AphiaID. By combining information on trophic modes with an already existing and widely-used database such as WoRMS, the authors hope to make data on trophic modes of aquatic protists more accessible in a machine-readable fashion. Thus, the dataset can help facilitate a better understanding of trophic dynamics and the functional role of protist groups within aquatic ecosystems. The trophic mode of the taxa included in this dataset can be accessed via the attributes of the WoRMS taxa search tool (see, for example, <http://www.marinespecies.org/aphia.php?p=taxdetails&id=232772#attributes>).

However, this dataset is only a start. The authors hope that, as more information on mixoplankton becomes available, this dataset will actively be expanded through community effort. New data can easily be submitted to WoRMS using the instructions available on <https://www.marinespecies.org/contribute.php>.

General description

Purpose: The purpose of this project was to establish a dataset on trophic modes of aquatic protists. As correct classification of trophic modes is especially important within the context of analysing routine monitoring data, the idea arose to make this work more accessible to the broad aquatic science and management community. This dataset was assembled in the scope of the H2020 Marie-Curie ITN "MixITIN".

Project description

Title: A dataset on trophic modes of aquatic protists

Personnel: Lisa K. Schneider (management, data collection, literature research, tidy data implementation, data concatenation, manuscript preparation), Konstantinos Anestis (data collection, literature research, manuscript contribution), Joost Mansour (literature research, manuscript contribution), Anna A. Anschütz (literature research, manuscript revision), Nathalie Gypens (data collection, expert knowledge, manuscript revision), Per J. Hansen (data collection, expert knowledge, manuscript revision), Uwe John (data collection, expert knowledge, manuscript revision), Kerstin Klemm (data collection, manuscript revision), Jon Lapeya Martin (data collection, manuscript revision), Nikola Medic (literature research, manuscript revision), Fabrice Not (expert knowledge, manuscript revision), Willem Stolte (management, concept development, expert knowledge, manuscript preparation).

Design description: To gather, analyse and disseminate the trophic mode of aquatic protists, a dataset was submitted to the World Register of Marine Species, WoRMS at <http://www.marinespecies.org>. WoRMS provides "an authoritative and comprehensive list of names of marine organisms, including information on synonymy" (WoRMS Editorial Board 2017) and this list of marine organisms can be augmented with metadata, such as traits, for example, trophic modes. Each organism is labelled with a unique AphiaID with

which it is possible to keep track of taxonomic name changes (Vandepitte et al. 2015). This approach of keeping track of taxonomic name changes allows the database to be accessed and used in different ways, for example, by searching for single organisms or matching a list of taxa.

In this dataset, the trophic mode is defined by assigning one of the three different aquatic protist categories (*sensu* Flynn et al. (2019)): phytoplankton, protozooplankton or mixoplankton. Phytoplankton are defined as protists that obtain their nourishment via photo(auto)trophy and osmo(hetero)trophy. Irrespective of seasonality or environmental conditions, phytoplankton are always incapable of phago(hetero)trophy. Protozooplankton are defined as protists that obtain their nourishment via phago(hetero)trophy and osmo(hetero)trophy. Irrespective of seasonality or environmental conditions, protozooplankton are always incapable of photo(auto)trophy. Mixoplankton are defined as protists that obtain their nourishment by combining photo(auto)trophy, osmo(hetero)trophy and phago(hetero)trophy, so called mixotrophy.

Furthermore, for each mixoplankton, the type of mixotrophy is assigned as a trait. In the dataset, the type of mixotrophy is defined by assigning CM, GNCM, pSNCM or eSNCM to the mixoplankton, according to the types identified in Mitra et al. (2016). Constitutive Mixoplankton (CM) have the innate ability to perform photosynthesis, while Non-Constitutive Mixoplankton need to acquire chloroplasts from their prey. These Non-Constitutive Mixoplankton are divided into the General Non-Constitutive Mixoplankton (GNCM), the plastid Specialists Non-Constitutive Mixoplankton (pSNCM) and the endosymbiotic Specialist Non-Constitutive Mixoplankton (eSNCM). The GNCMs can use chloroplasts from multiple phototrophic prey, while the pSNCMs and eSNCMs only use chloroplasts from specific preys or endosymbionts.

Funding: This project has received funding from the European Union's Horizon 2020 research and innovation programme under the Marie Skłodowska-Curie grant agreement No 766327 and EMODnet Biology (EC Service contract – EASME/EMFF/2016/1.3.1.2/Lot 5/SI2.750022).

Sampling methods

Study extent: This dataset focuses on the trophic modes of aquatic protists. It combines data from five different sources: routine monitoring (HELCOM 2019, Rijkswaterstaat 2019), scientific cruises (John 2020, Martin 2020), scientific papers (primary literature), review papers and a book chapter (secondary literature). Sampling for routine monitoring and on scientific cruises was performed using Niskin bottles, followed by inspection of the samples using light microscopy. In the case of the scientific cruises, metabarcoding was employed for further validation of the microscopic data. Suppl. material 1 lists all sources and their complete references.

Sampling description: This dataset (Suppl. material 2) covers 1296 taxa. Fig. 1 shows that the bulk of the taxa stem from routine monitoring (72%) and are mainly labelled as

phytoplankton (89%). Secondary literature (reviews and book chapter) contributes 10% and 1.9% of the total taxa, respectively, which are all labelled as mixoplankton. Primary literature (scientific papers) contributes 11% of the total taxa and are divided evenly between protozooplankton and mixoplankton. Recent scientific cruises in the North Sea contribute 3% of the total taxa and display the most even distribution of trophic modes.

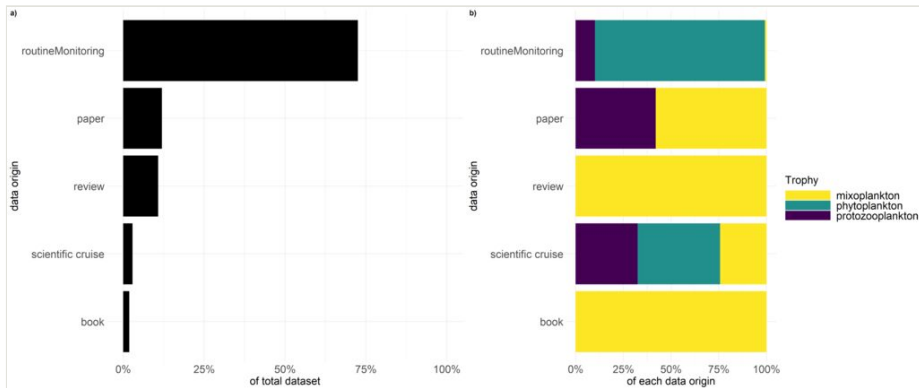


Figure 1. [doi](#)

Depiction of a) percentage of the data origin to the complete dataset and b) percentage of trophic mode per data origin.

In total, 21% of the taxa are classified as mixoplankton, 66% as phytoplankton and 13% as protozooplankton (Fig. 2). However, as 72% of the taxa originate from routine monitoring, the percentage of mixoplankton is most likely under-represented. Most routine monitoring undersample mixoplankton due to the employed sampling techniques (Flynn et al. 2019). An example is the routine monitoring data of the Dutch Southern North Sea in which ciliates, as well as nanoflagellates, are often not identified and counted. Both of these groups are known to contain mixoplankton (Haraguchi et al. 2018, Stoecker and Lavrentyev 2018). Furthermore, mixotrophy must be proven in phyto- and protozooplankton by observing either feeding or utilisation of chloroplasts from prey or symbionts. It must be assumed that taxa remain labelled according to the historical dichotomy until proven otherwise. This remains an issue also for this dataset, of which the user should be aware. It can only be remedied by continually updating the dataset as new mixoplankton taxa are empirically determined.

Quality control: In order to ensure consistent taxonomy over the various data sources, each data source was matched against the WoRMS taxonomic database using the WoRMS "Match taxa" tool. This ensured that each taxon was given the currently-accepted scientific name and referenced with an AphiaID. Data sources were tidied (Wickham 2014) and joined into one dataset. If the various sources disagreed with each other on the trophic mode of the taxon, two decision pathways were possible. Firstly, mixoplankton data sources were always given precedence over other sources. Secondly, if the data sources disagreed on non-mixoplankton, then expert knowledge and literature was used to assign

the trophic mode of that organism. Lastly, the list was checked by expert witnesses to ensure correct trophic classifications. This described workflow is visualised in Fig. 3.

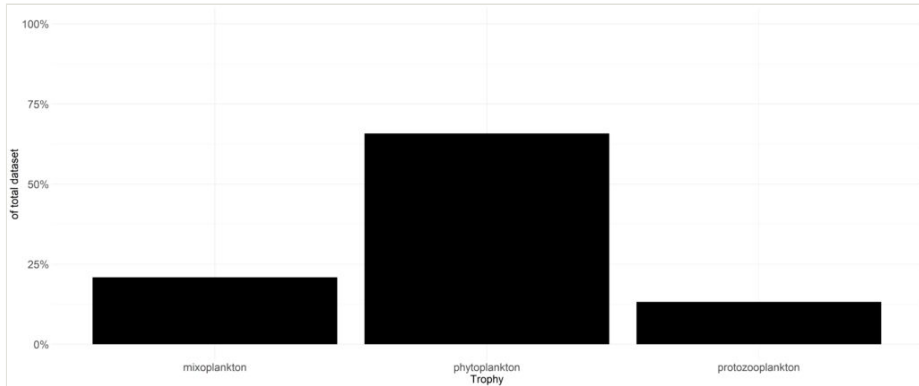


Figure 2. [doi](#)
Contribution of trophic modes to total dataset.

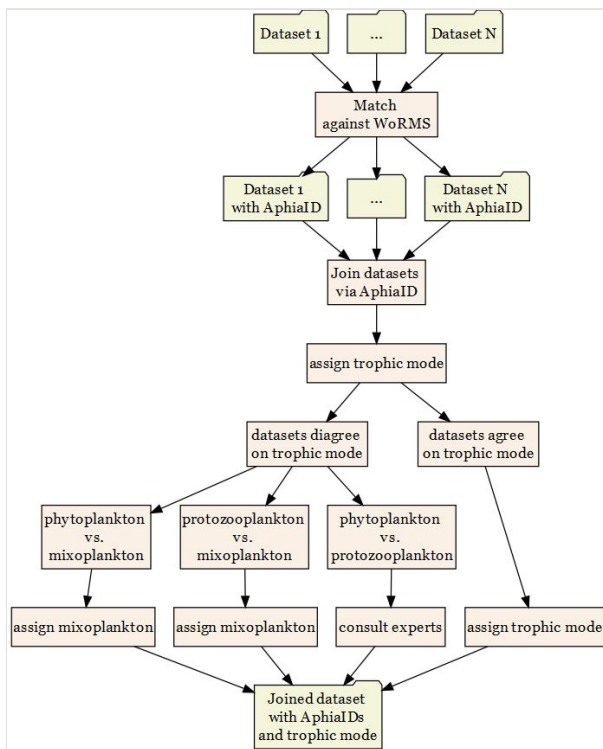


Figure 3. [doi](#)
Workflow depiction beginning with single data sources and ending with the complete dataset.

Geographic coverage

Description: As this consortium is based in the EU, data stemming from routine monitoring is biased towards European waters. Data derived from literature extends beyond the EU. We hope that this dataset will be built upon with data contributions from other scientists, to establish a more encompassing collaborative resource that will promote research on trophic modes. New data can easily be submitted to WoRMS using the instructions available on <https://www.marinespecies.org/contribute.php>.

Taxonomic coverage

Description: Fig. 4 visualises the contribution of each class to the total dataset (Fig. 4a), as well as the contribution of trophic modes across those classes (Fig. 4b). It should be noted that only those classes are displayed that make up 90% of the total dataset. The largest class, represented in the dataset, is Bacillariophyceae, followed by Dinophyceae and Cyanophyceae. In terms of trophic mode, the classes which contain the most phytoplankton are Bacillariophyceae, Cyanophyceae, Chlorophyceae and Trebouxiophyceae. The classes which contain the most mixoplankton are Dinophyceae, Polycystina, Oligotrichea, Globothalamea, Prymnesiophyceae, Acantharia and Cryptophyceae. Protozooplankton are represented in the classes Dinophyceae, Polycystina, Oligotrichea, Globothalamea and Acantharia, in which they contribute between 5% and 30%.

Traits coverage

This dataset focuses on the trophic mode of aquatic protists. As mentioned, aquatic protists can be divided into phytoplankton, protozooplankton and mixoplankton. This next section will give more detail on these different functional groups and their impact on aquatic ecosystems.

Phytoplankton are defined as those protists that perform photosynthesis and are incapable of phagotrophy. The most prominent examples of phytoplankton groups are cyanobacteria, diatoms and green algae. Attributing to their need of light for photosynthesis, phytoplankton are found in the euphotic zone, where light is available. It is estimated that aquatic photosynthesis by phytoplankton totals about half of the total primary production on Earth (Falkowski 1994, Field 1998). Phytoplankton in marine ecosystems play an important role in major biogeochemical cycles. For example, cyanobacteria species are known for their capacity to fix atmospheric nitrogen (25-50% of global natural fixation), a unique feature for this phytoplankton group (Canfield et al. 2010). Furthermore, diatoms contribute considerably to the global carbon cycling as they are responsible for 30-40% of global primary productivity (Sarothou et al. 2005). The diatom cell wall is composed of silica and thereby diatoms are considered the world's largest contributors to the silica cycle (Tréguer and De La Rocha 2013). Moreover, sinking of phytoplankton contributes to the carbon export to the deep oceans (Falkowski 1994).

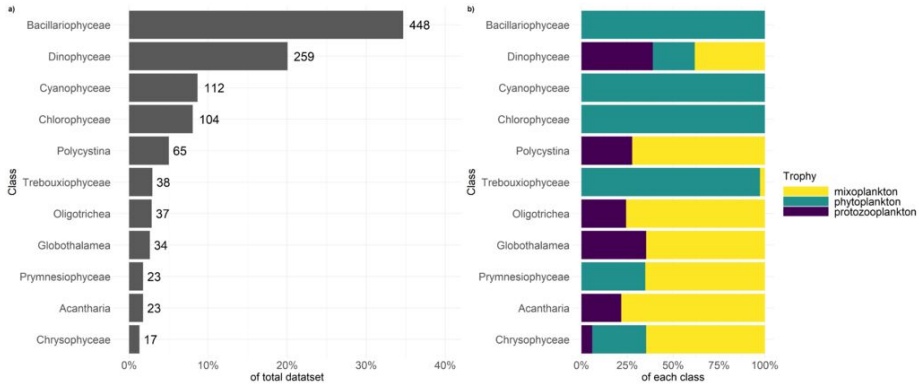


Figure 4. [doi](#)

Depiction of a) percentage of each class to the complete dataset and b) percentage of trophic mode per class.

Protozooplankton are defined as those protists that gain their nutrition through capture and ingestion of prey (or organic particles). Protozooplankton do not have the capability for photosynthesis, nor other means of producing their own organic carbon. Examples of protozooplankton are heterotrophic ciliates, heterotrophic dinoflagellates and heterotrophic (nano)flagellates. The grazing of heterotrophic protists on phytoplankton plays an important role in controlling the growth and population of phytoplankton taxa. Heterotrophic protists are the connecting link for energy transfer towards higher trophic levels and, in some cases, can be responsible for the removal of the largest part of primary production (Calbet and Landry 2004, Lawrence and Menden-Deuer 2012). Apart from the consumption of phytoplankton, heterotrophic protists also ingest prokaryotes indicating their further involvement in planktic food web energy transfer (Cho et al. 2000, Pernice et al. 2014, Šimek et al. 2019).

Mixoplankton are defined as those protists that can combine phototrophy and phagotrophy (*sensu* Flynn et al. 2019). Mixoplankton are often associated with mature ecosystems (Mitra et al. 2014, Moorthi et al. 2017) and many harmful algal bloom species are known to be mixotrophic. Due to their ability to combine phototrophy and phagotrophy, they can simultaneously fulfil many of the functions (Selosse et al. 2016) described for both phytoplankton and protozooplankton. Mixoplankton can thus also contribute significantly to primary productivity and functionality of ecosystems (Ghyoot et al. 2017). The additional energy acquired by the consumption of prey can increase the gross growth efficiency of mixoplankton (Schoener and McManus 2012) and subsequently, have major effects on trophic transfer in the food web (Ward and Follows 2016). CMs (e.g. *Prymnesium parvum*, *Karlodinium veneficum*) that have the innate ability to perform photosynthesis, can express bacterivory (Unrein et al. 2007) or ingest other protists to supplement their nutritional needs (Stoecker et al. 2017). NCMs, such as the kleptoplastidic ciliate *Strombidium basimorphum*, can be voracious grazers, achieving grazing rates comparable with pure heterotrophic species (Maselli et al. 2020). Furthermore, NCMs also contribute significantly to primary production through either their ability to use prey chloroplasts after ingestion (Nielson et al.

2012) or others (eSNCMs, like many Acantharia and Foraminifera) through chloroplast containing endosymbionts (Caron et al. 1995).

Usage rights

Use license: Creative Commons Public Domain Waiver (CC-Zero)

Data resources

Data package title: Trophic modes of aquatic protists

Number of data sets: 2

Data set name: List of trophic citations

Description: List of trophic mode references giving the short citation form (used in the dataset) and the full reference.

Column label	Column description
source	Short citation of the reference source used in the dataset
Full citation	Full APA citation of the reference source

Data set name: Trophic modes of aquatic protists

Description: Dataset listing the trophic modes of aquatic protists (with reference and data source) along with their accepted scientific name, AphiaID and taxonomic hierarchy.

Column label	Column description
ScientificName	Accepted scientific name retrieved from WoRMS.
AphiaID	Accepted AphiaID (unique identifier) retrieved from WoRMS.
Trophy	Gives the trophic mode of taxa as either "phytoplankton", "protozooplankton" or "mixoplankton".
typeMX	Gives the type of mixotrophy as either "CM" (Constitutive Mixoplankton), "GNCM" (General Non-Constitutive Mixoplankton), "eSNCM" (endosymbiotic Specialist Non-Constitutive Mixoplankton) or "pSNCM" (plastid Specialist Non-Constitutive Mixoplankton). If the type of mixotrophy does not apply (because the organism is labelled as phytoplankton or protozooplankton), the type of mixotrophy is labelled with "NA".
source	Gives the reference for the assigned trophic modes. Refers to primary literature or secondary literature (book, review papers or published datasets from routine monitoring).
dataType	Denotes the origin of the data point. Can be either "book", "paper", "review", "routine monitoring" or "scientific cruise".

Kingdom	Kingdom of the taxa within the taxonomic hierarchy
Phylum	Phylum of the taxa within the taxonomic hierarchy
Class	Class of the taxa within the taxonomic hierarchy
Order	Order of the taxa within the taxonomic hierarchy
Family	Family of the taxa within the taxonomic hierarchy
Genus	Genus of the taxa within the taxonomic hierarchy
Species	Species of the taxa within the taxonomic hierarchy

Additional information

A github repository is available which contains the code to match the species list against WoRMS, as well as to create the figures: <https://github.com/lkschn/trophyProtists>.

Acknowledgements

The authors want to thank Salvador Fernández for reviewing the manuscript and the staff at WoRMS for their quick and efficient handling of the dataset submission.

This project has received funding from the European Union's Horizon 2020 research and innovation programme under the Marie Skłodowska-Curie grant agreement No 766327 and EMODnet Biology (EC Service contract – EASME/EMFF/2016/1.3.1.2/Lot 5/SI2.750022).

References

- Calbet A, Landry M (2004) Phytoplankton growth, microzooplankton grazing, and carbon cycling in marine systems. *Limnology and Oceanography* 49 (1): 51-57. <https://doi.org/10.4319/lo.2004.49.1.0051>
- Canfield D, Glazer A, Falkowski P (2010) The evolution and future of Earth's nitrogen cycle. *Science* 330 (6001): 192-196. <https://doi.org/10.1126/science.1186120>
- Caron DA, Michaels AF, Swanberg NR, Howse FA (1995) Primary productivity by symbiont-bearing planktonic sarcodines (Acantharia, Radiolaria, Foraminifera) in surface waters near Bermuda. *Journal of Plankton Research* 17 (1): 103-129. <https://doi.org/10.1093/plankt/17.1.103>
- Cho B, Na S, Choi D (2000) Active ingestion of fluorescently labeled bacteria by mesopelagic heterotrophic nanoflagellates in the East Sea, Korea. *Marine Ecology Progress Series* 206: 23-32. <https://doi.org/10.3354/meps206023>
- Falkowski PG (1994) The role of phytoplankton photosynthesis in global biogeochemical cycles. *Photosynthesis Research*, 39 (3): 235-258. <https://doi.org/10.1007/BF00014586>

- Faure E, Not F, Benoiston A, Labadie K, Bittner L, Ayata S (2019) Mixotrophic protists display contrasted biogeographies in the global ocean. *The ISME Journal* 13 (4): 1072-1083. <https://doi.org/10.1038/s41396-018-0340-5>
- Field CB (1998) Primary production of the biosphere: Integrating terrestrial and oceanic components. *Science* 281 (5374): 237-240. <https://doi.org/10.1126/science.281.5374.237>
- Flynn K, Stoecker D, Mitra A, Raven J, Glibert P, Hansen PJ, Granéli E, Burkholder J (2013) Misuse of the phytoplankton–zooplankton dichotomy: the need to assign organisms as mixotrophs within plankton functional types. *Journal of Plankton Research* 35 (1): 3-11. <https://doi.org/10.1093/plankt/fbs062>
- Flynn KJ, Mitra A, Anestis K, Anschütz AA, Calbet A, Ferreira GD, Gypens N, Hansen PJ, John U, Martin JL, Mansour JS, Maselli M, Medić N, Norlin A, Not F, Pitta P, Romano F, Saiz E, Schneider LK, Stolte W, Traboni C (2019) Mixotrophic protists and a new paradigm for marine ecology: where does plankton research go now? *Journal of Plankton Research* 41 (4): 375-391. <https://doi.org/10.1093/plankt/fbz026>
- Ghyoot C, Lancelot C, Flynn K, Mitra A, Gypens N (2017) Introducing mixotrophy into a biogeochemical model describing an eutrophied coastal ecosystem: The Southern North Sea. *Progress in Oceanography* 157: 1-11. <https://doi.org/10.1016/j.pocean.2017.08.002>
- Haraguchi L, Jakobsen H, Lundholm N, Carstensen J (2018) Phytoplankton community dynamic: A driver for ciliate trophic strategies. *Frontiers in Marine Science* 5: 272. <https://doi.org/10.3389/fmars.2018.00272>
- HELCOM (2019) HELCOM Phytoplankton biovolumes. Release date: 2019-7-06. URL: <http://www.helcom.fi/helcom-at-work/projects/phytoplankton>
- John U (2020) Data of HE513 Pangea. Release date: 2020-7-17. URL: <https://doi.pangaea.de/10.1594/PANGAEA.897217>
- Lawrence C, Menden-Deuer S (2012) Drivers of protistan grazing pressure: seasonal signals of plankton community composition and environmental conditions. *Marine Ecology Progress Series* 459: 39-52. <https://doi.org/10.3354/meps09771>
- Leles SG, Mitra A, Flynn KJ, Stoecker DK, Hansen PJ, Calbet A, McManus GB, Sanders RW, Caron DA, Not F, Hallegraeff GM, Pitta P, Raven JA, Johnson MD, Glibert PM, Våge S (2017) Oceanic protists with different forms of acquired phototrophy display contrasting biogeographies and abundance. *Proceedings of the Royal Society B: Biological Sciences* 284 (1860). <https://doi.org/10.1098/rspb.2017.0664>
- Leles SG, Mitra A, Flynn KJ, Tillmann U, Stoecker D, Jeong HJ, Burkholder J, Hansen PJ, Caron D, Glibert P, Hallegraeff G, Raven J, Sanders R, Zubkov M (2019) Sampling bias misrepresents the biogeographical significance of constitutive mixotrophs across global oceans. *Global Ecology and Biogeography* 28 (4): 418-428. <https://doi.org/10.1111/geb.12853>
- Martin JL (2020) Belgian coastal zone sampling with RV Simon Stevin.
- Maselli M, Altenburger A, Stoecker D, Hansen P (2020) Ecophysiological traits of mixotrophic *Strombidium* spp. *Journal of Plankton Research* 43 (5). <https://doi.org/10.1093/plankt/fbaa041>
- Mitra A, Flynn KJ, Burkholder JM, Berge T, Calbet A, Raven JA, Granéli E, Glibert PM, Hansen PJ, Stoecker DK, Thingstad F, Tillmann U, Våge S, Wilken S, Zubkov MV (2014) The role of mixotrophic protists in the biological carbon pump. *Biogeosciences* 11 (4): 995-1005. <https://doi.org/10.5194/bg-11-995-2014>

- Mitra A, Flynn K, Tillmann U, Raven J, Caron D, Stoecker D, Not F, Hansen P, Hallegraeff G, Sanders R, Wilken S, McManus G, Johnson M, Pitta P, Våge S, Berge T, Calbet A, Thingstad F, Jeong HJ, Burkholder J, Glibert P, Granéli E, Lundgren V (2016) Defining planktonic protist functional groups on mechanisms for energy and nutrient acquisition: Incorporation of diverse mixotrophic strategies. *Protist* 167 (2): 106-120. <https://doi.org/10.1016/j.protis.2016.01.003>
- Moorthi SD, Ptacnik R, Sanders RW, Fischer R, Busch M, Hillebrand H (2017) The functional role of planktonic mixotrophs in altering seston stoichiometry. *Aquatic Microbial Ecology* 79: 235-245. <https://doi.org/10.3354/ame01832>
- Nielson L, Krock B, Hansen PJ (2012) Effects of light and food availability on toxin production, growth and photosynthesis in *Dinophysis acuminata*. *Marine Ecology Progress Series* 471: 37-50. <https://doi.org/10.3354/meps10027>
- Pernice MC, Forn I, Gomes A, Lara E, Alonso-Sáez L, Arrieta JM, del Carmen Garcia F, Hernando-Morales V, MacKenzie R, Mestre M, Sintes E, Teira E, Valencia J, Varela MM, Vaqué D, Duarte CM, Gasol JM, Massana R (2014) Global abundance of planktonic heterotrophic protists in the deep ocean. *The ISME Journal* 9 (3): 782-792. <https://doi.org/10.1038/ismej.2014.168>
- Rijkswaterstaat (2019) Servicedesk data. Release date: 2020-7-17. URL: www.rws.nl.
- Sarthou G, Timmermans KR, Blain S, Tréguer P (2005) Growth physiology and fate of diatoms in the ocean. *Journal of Sea Research* 53 (1-2): 25-42. <https://doi.org/10.1016/j.seares.2004.01.007>
- Schoener D, McManus G (2012) Plastid retention, use, and replacement in a kleptoplastidic ciliate. *Aquatic Microbial Ecology* 67 (3): 177-187. <https://doi.org/10.3354/ame01601>
- Selosse M, Charpin M, Not F (2016) Mixotrophy everywhere on land and in water: the *grand écart* hypothesis. *Ecology Letters* 20 (2): 246-263. <https://doi.org/10.1111/ele.12714>
- Šimek K, Grujić V, Nedoma J, Jezberová J, Šorf M, Matoušů A, Pechar L, Posch T, Bruni E, Vrba J (2019) Microbial food webs in hypertrophic fishponds: Omnivorous ciliate taxa are major protistan bacterivores. *Limnology and Oceanography* 64 (5): 2295-2309. <https://doi.org/10.1002/lno.11260>
- Stoecker D, Hansen PJ, Caron D, Mitra A (2017) Mixotrophy in the marine plankton. *Annual Review of Marine Science* 9 (1): 311-335. <https://doi.org/10.1146/annurev-marine-010816-060617>
- Stoecker D, Lavrentyev P (2018) Mixotrophic plankton in the Polar Seas: A Pan-Arctic review. *Frontiers in Marine Science* 5 <https://doi.org/10.3389/fmars.2018.00292>
- Tréguer PJ, De La Rocha CL (2013) The world ocean silica cycle. *Annual review of marine science* 5: 477-501. <https://doi.org/10.1146/annurev-marine-121211-172346>
- Unrein F, Massana R, Alonso-Sáez L, Gasol J (2007) Significant year-round effect of small mixotrophic flagellates on bacterioplankton in an oligotrophic coastal system. *Limnology&Oceanography* 52 (1): 456-469. <https://doi.org/10.4319/lo.2007.52.1.0456>
- Vandepitte L, Vanhoorne B, Decock W, Dekeyser S, Trias Verbeeck A, Bovit L, Hernandez F, Mees J (2015) How Aphia - the platform behind several online and taxonomically oriented databases - can serve both the taxonomic community and the field of biodiversity informatics. *Journal of Marine Science and Engineering* 3 (4). <https://doi.org/10.3390/jmse3041448>

- Ward B, Follows M (2016) Marine mixotrophy increases trophic transfer efficiency, mean organism size, and vertical carbon flux. *Proceedings of the National Academy of Sciences* 113 (11): 2958-2963. <https://doi.org/10.1073/pnas.1517118113>
- Wickham H (2014) Tidy Data. *Journal of Statistical Software* 59 (10). <https://doi.org/10.18637/jss.v059.i10>
- WoRMS Editorial Board (2017) World Register of Marine Species. Available from <http://www.marinespecies.org> at VLIZ. Accessed 2019-07-03. VLIZ <https://doi.org/10.14284/170>

Supplementary materials

Suppl. material 1: List of trophic citations [doi](#)

Authors: Lisa K. Schneider, Konstantinos Anestis, Joost Mansour, Anna A. Anschütz, Nathalie Gypens, Per J. Hansen, Uwe John, Kerstin Klemm, Jon Lapeya Martin, Nikola Medic, Fabrice Not, Willem Stolte

Data type: Short and full citations

Brief description: This list gives all trophic citations in their short form (used in the dataset), as well as their full reference.

[Download file](#) (21.58 kb)

Suppl. material 2: Dataset on trophic modes of aquatic protist [doi](#)

Authors: Lisa K. Schneider, Konstantinos Anestis, Joost Mansour, Anna A. Anschütz, Nathalie Gypens, Per J. Hansen, Uwe John, Kerstin Klemm, Jon Lapeya Martin, Nikola Medic, Fabrice Not, Willem Stolte

Data type: Trophic mode and taxonomy of aquatic protists

Brief description: This dataset lists the trophic modes of aquatic protists (with reference and data origin) along with their accepted scientific name, AphiaID and taxonomic hierarchy.

[Download file](#) (201.03 kb)