

# Glacial landforms on the Siberian termination of the Lomonosov Ridge – hints for a 1 km thick pan-Arctic ice shelf?

Ursula Schlager

W. Jokat

E. Weigelt

C. Gebhardt

17. Dec. 2021

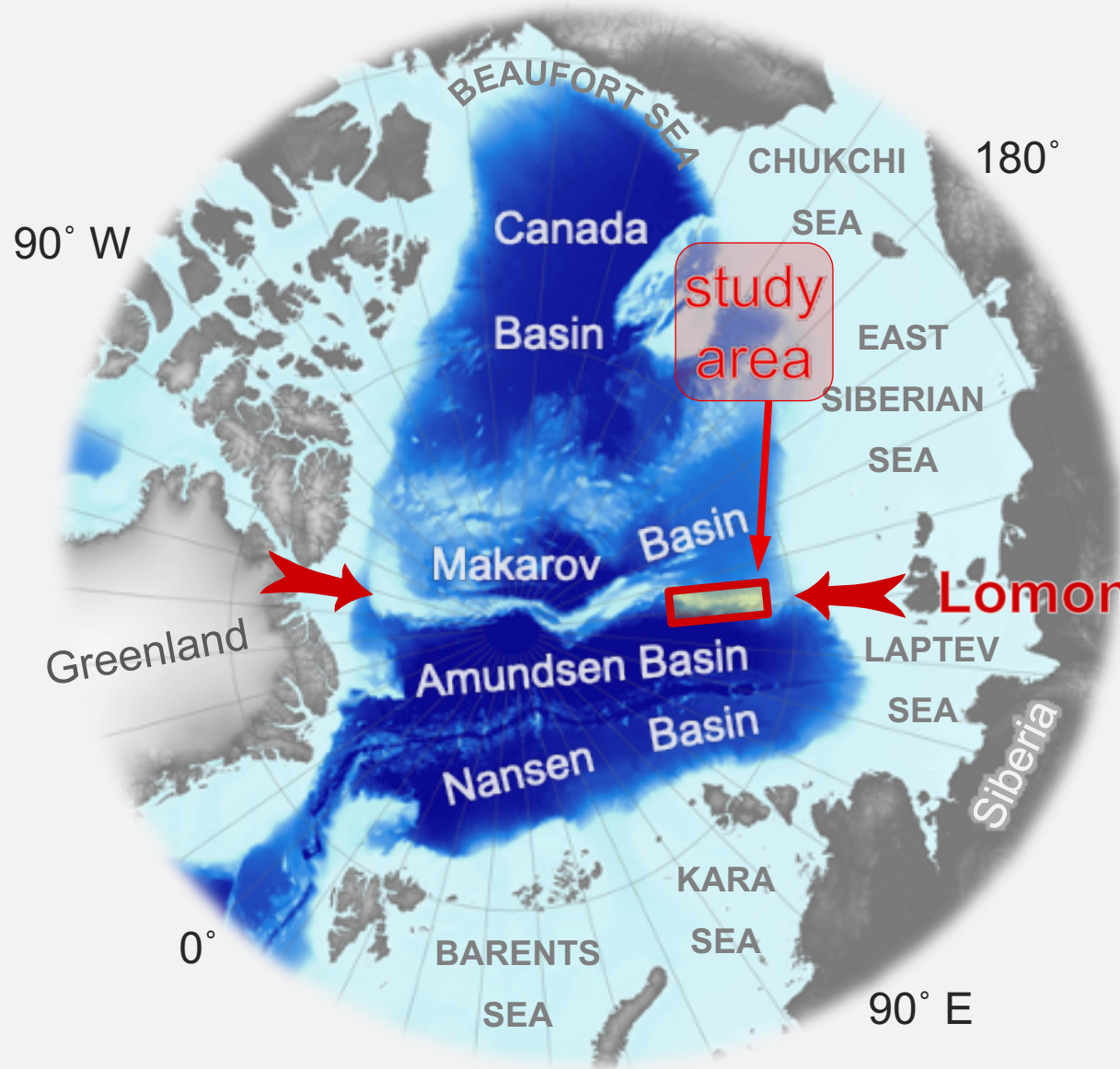


**AGU**

**FALL  
MEETING**

**SCIENCE  
is SOCIETY**

# The Lomonosov Ridge in the Arctic Ocean

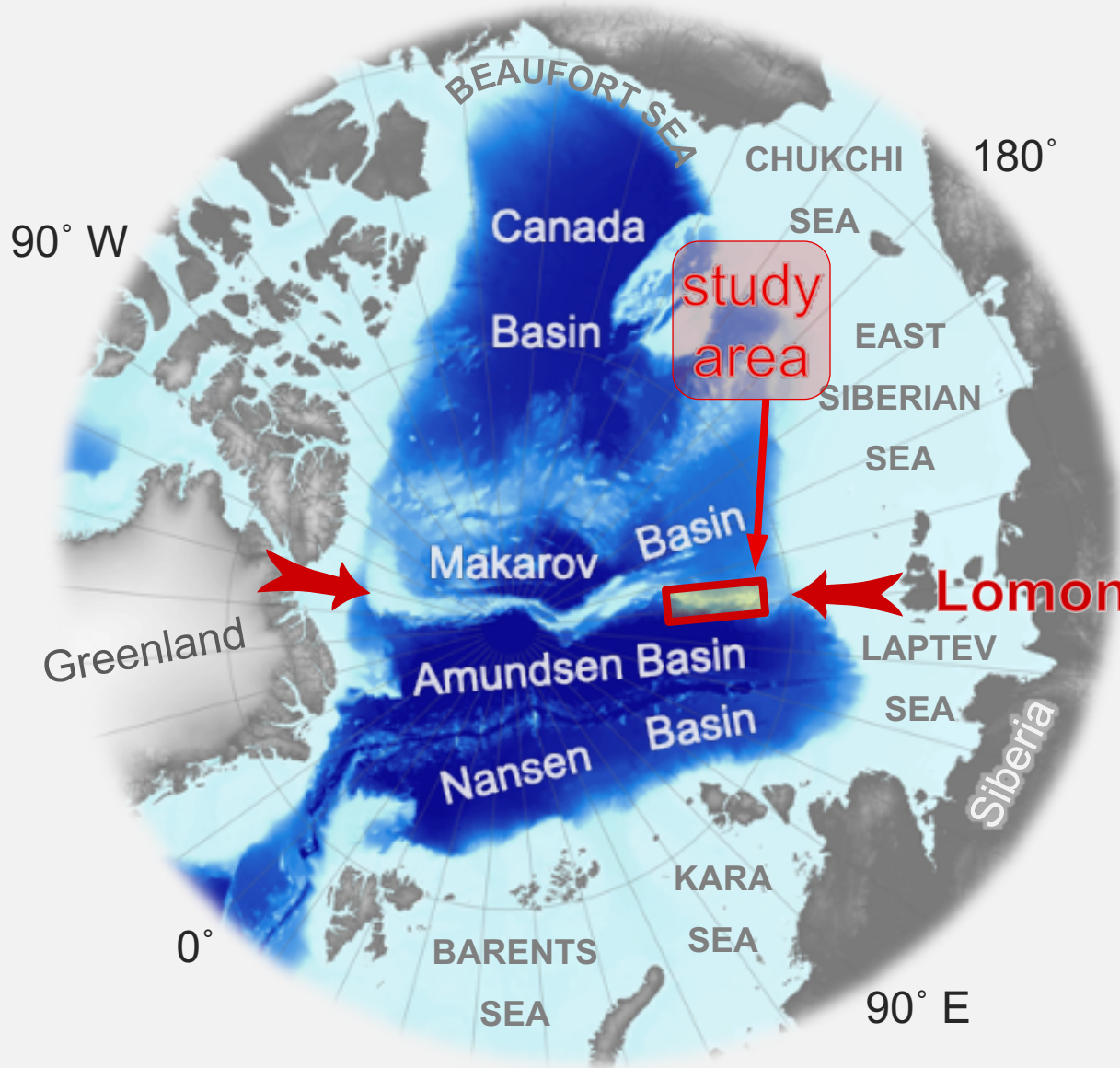


pan-Arctic ice shelf

= ice shelf covering the entire Arctic Ocean



# The Lomonosov Ridge in the Arctic Ocean



## pan-Arctic ice shelf

= ice shelf covering the entire Arctic Ocean

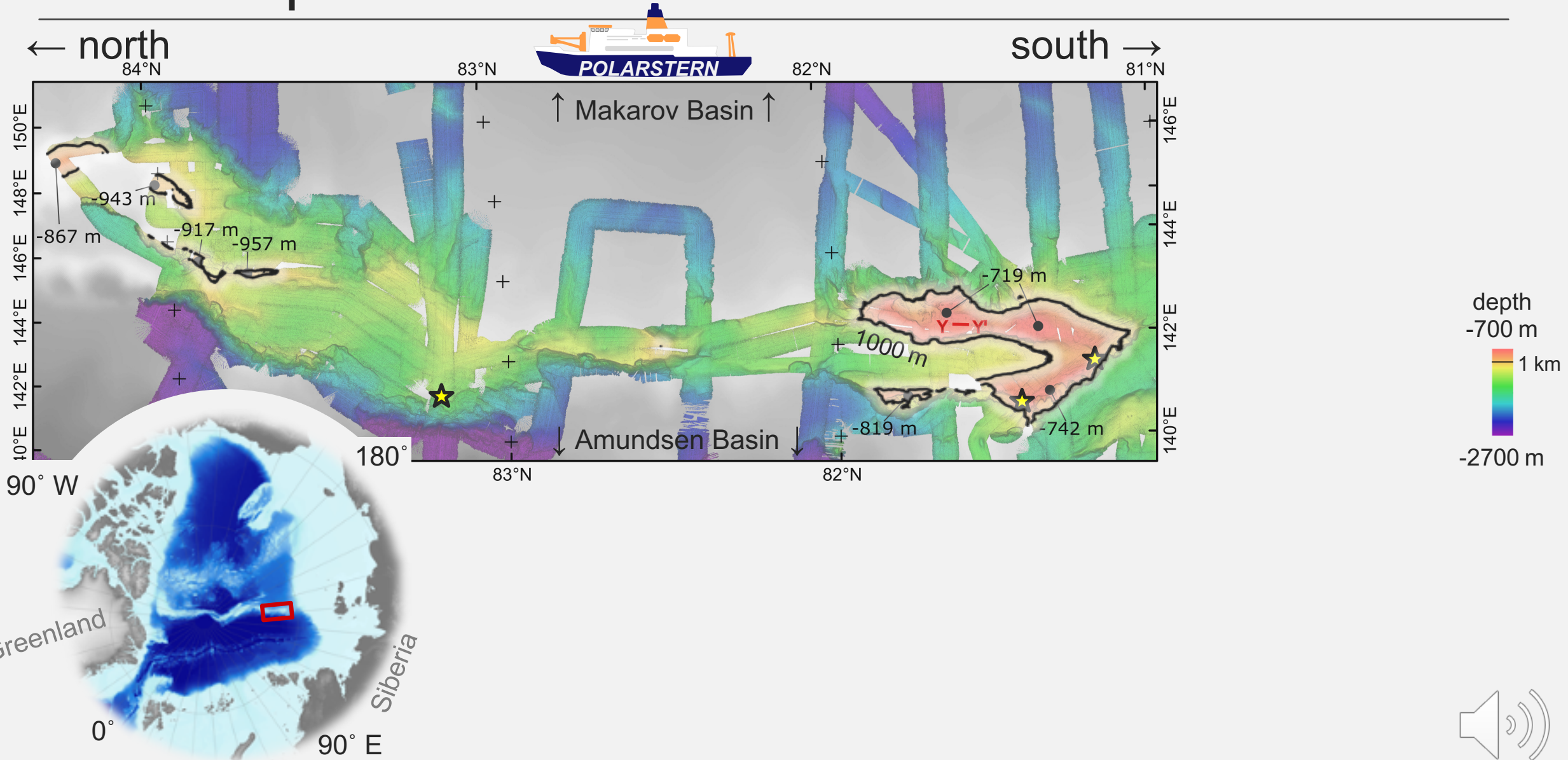
## Geibert et al., 2021

absence of thorium-230 in marine sediments implies pan-Arctic Ice Shelf

Was the pan-Arctic ice shelf ~1 km thick?

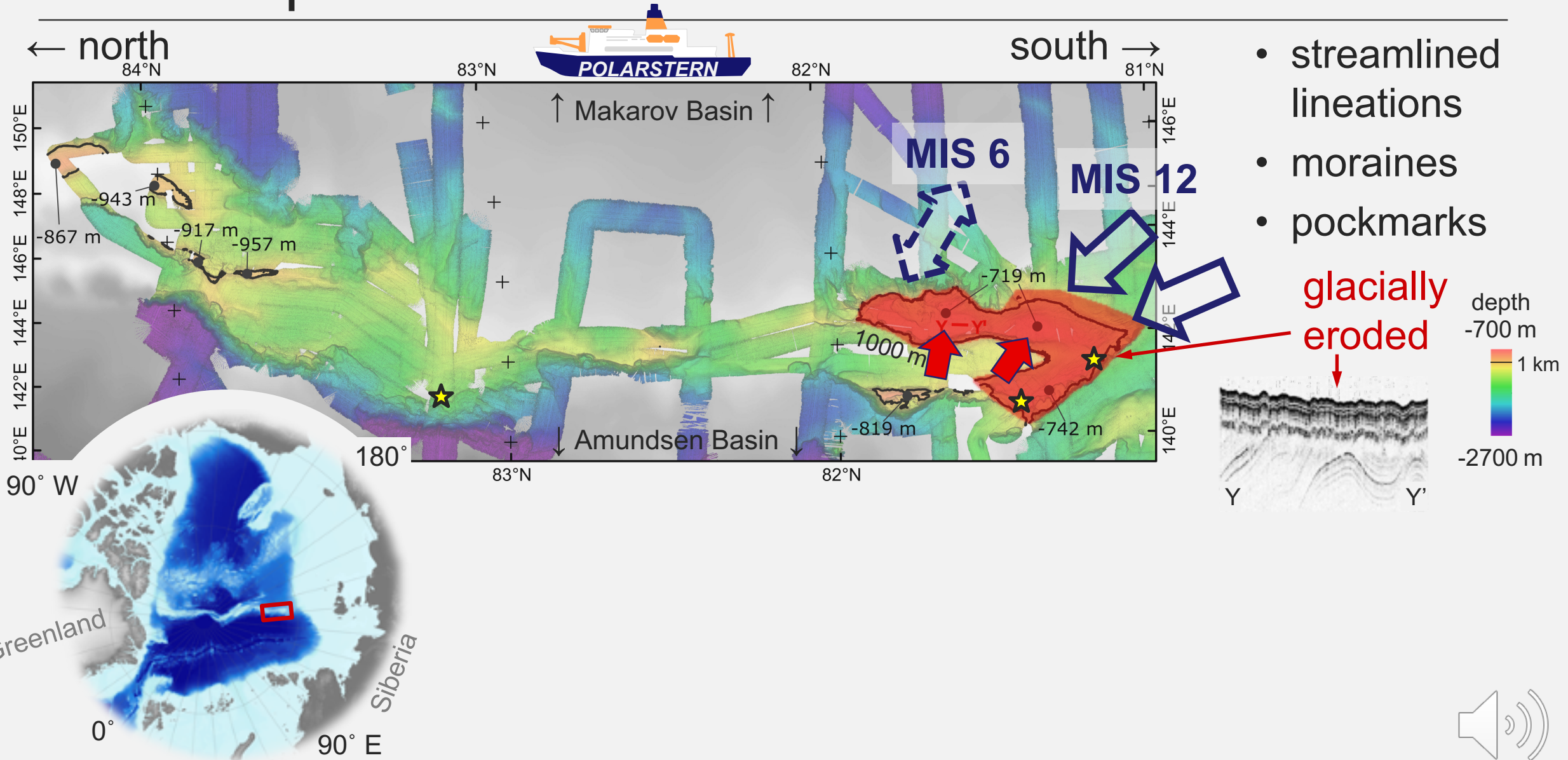


# Was the pan-Arctic ice shelf ~1 km thick?





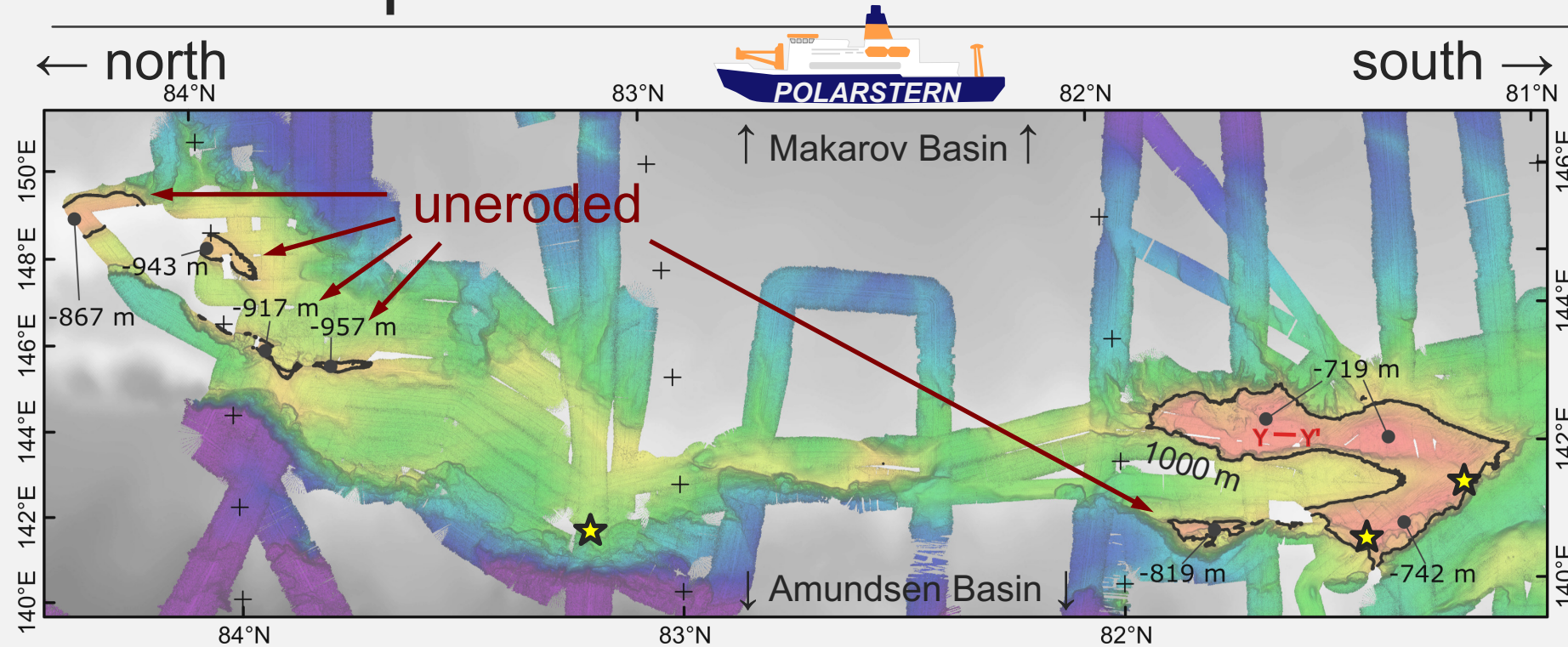
# Was the pan-Arctic ice shelf ~1 km thick?



- streamlined lineations
- moraines
- pockmarks

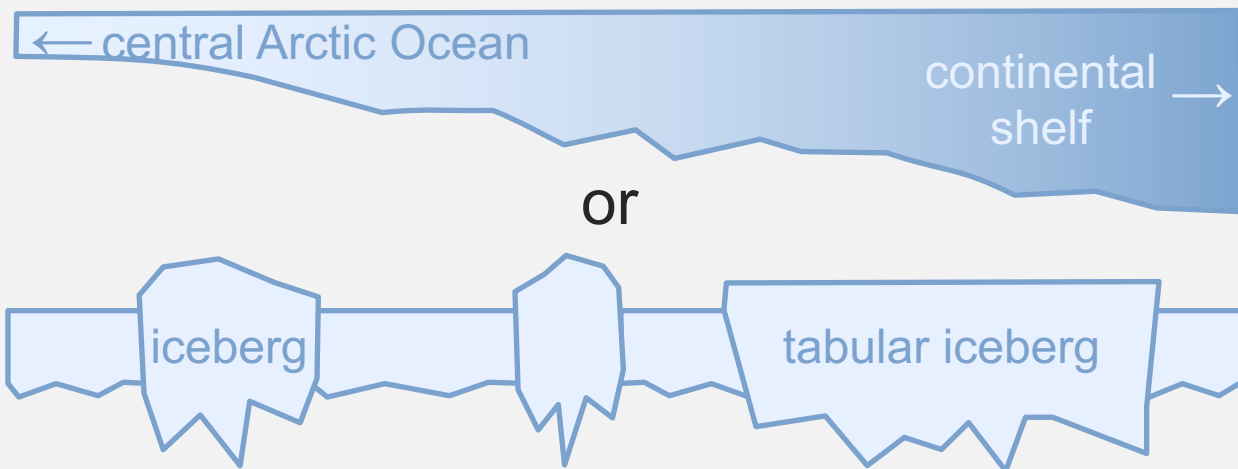
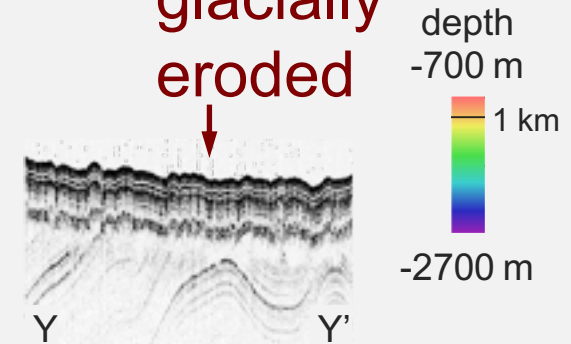


# Was the pan-Arctic ice shelf ~1 km thick?



- streamlined lineations
- moraines
- pockmarks

glacially eroded



**Variable ice thickness:**  
**up to ~1250 m and thinner than 780 m**



# THANK YOU

contact: [ursula.schlager@awi.de](mailto:ursula.schlager@awi.de)

**AGU** FALL  
MEETING

