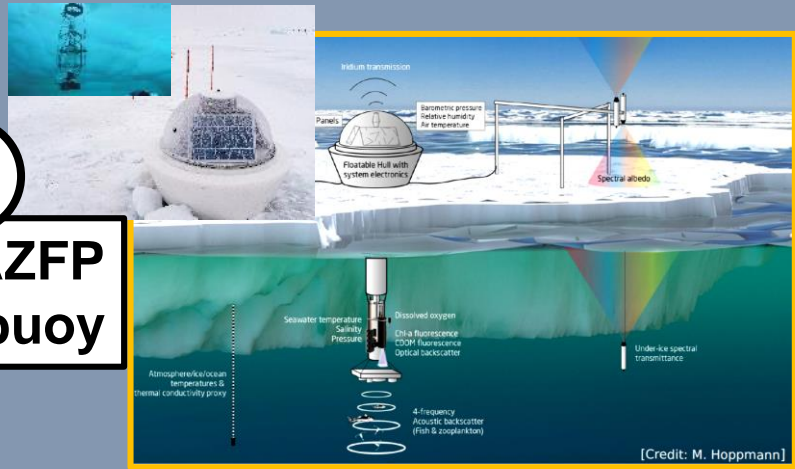


Autonomous profiler reveals light intensity triggering the seasonal migration of Arctic zooplankton

H. Flores^{1*}, J.P. Wilkinson², G. Veyssiere², G. Castellani¹, M. Hoppmann¹, M. Karcher^{1,3}, M. Nicolaus¹, J.C. Stroeve^{4,5,6}, J-H. Kim⁷, E-J. Yang⁷, L. Valcic⁸

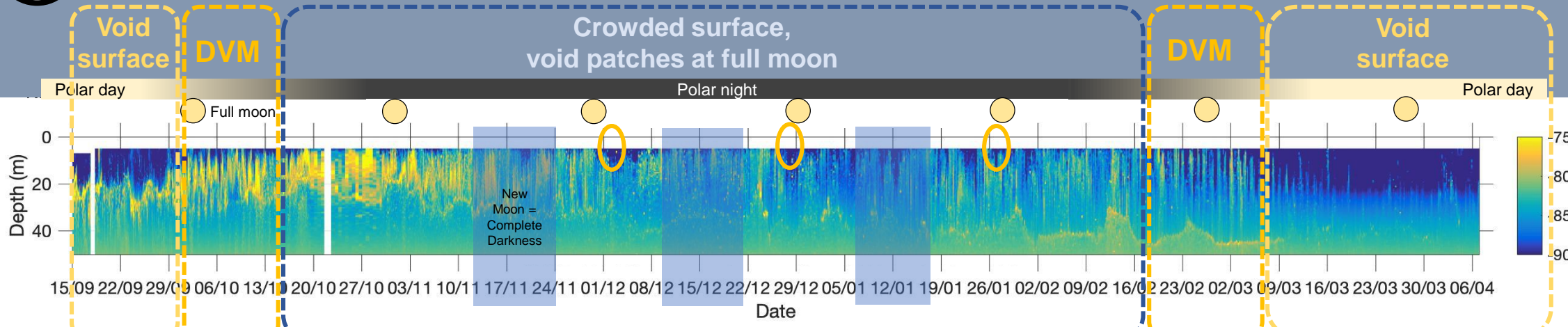
1

AZFP buoy

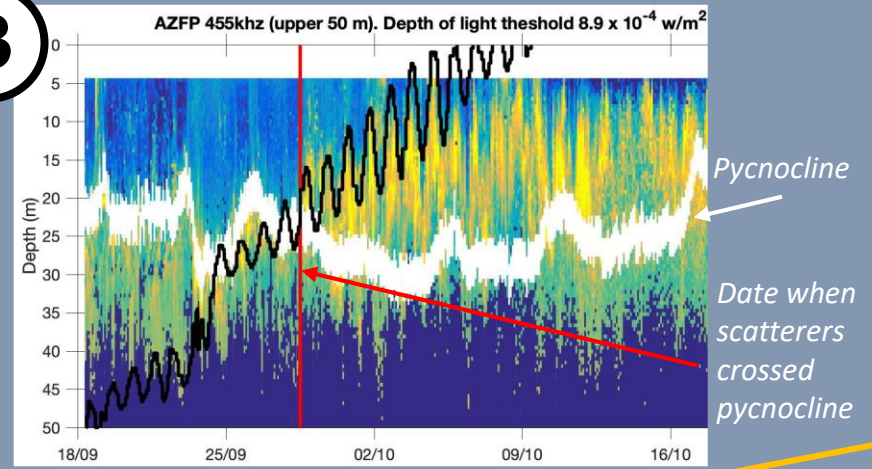
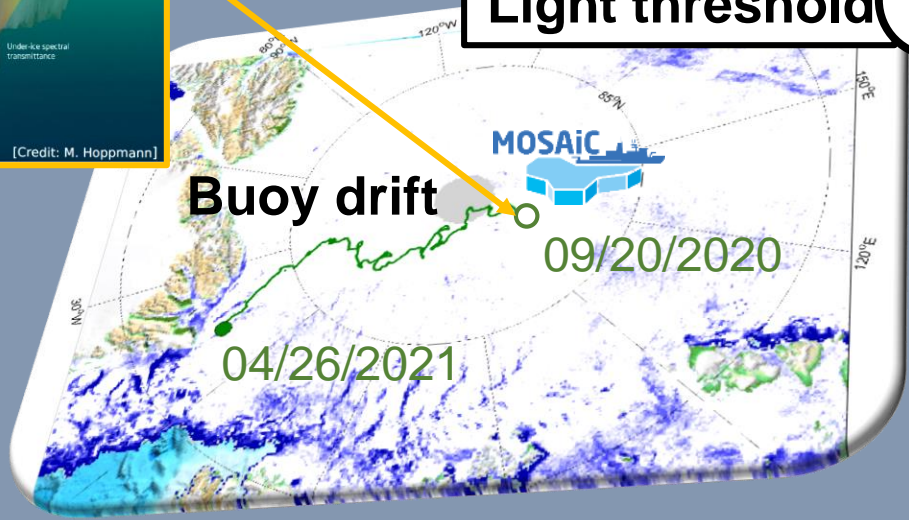


- Autonomous sensor array with AZFP, CTD, Optics, Fluorescence
- Near real-time data transmission
- Remote re-programming

2 **Annual light cycle**



Light threshold 3



Upper DVM limit exactly follows depth of light threshold level

¹Alfred Wegener Institute, Am Handelshafen 12, 27570, Bremerhaven, Germany / ²British Antarctic Survey, High Cross, Madingley Road, Cambridge, CB3 0ET, UK / ³O.A.Sys-Ocean Atmosphere Systems GmbH, Teswesweg 4, 20249 Hamburg, Germany / ⁴University College London, Earth Science Department, Gower Street, WC1E 6BT, UK / ⁵University of Manitoba, Centre for Earth Observation Science, 535 Wallace Building, Winnipeg R3T 2N2, Canada / ⁶National Snow and Ice Data Center, University of Colorado, 1540 30th Street, Boulder, CO 80302, USA / ⁷Korea Polar Research Institute, 26 Songdomirae-ro, Yeosu-gu, Incheon 21990, Republic of Korea / ⁸Bruncin, Lastovska ul. 4, 1000 Zagreb, Croatia

