

Magnetic Susceptibilities of the different Tectono-Stratigraphic Terranes of Heimefrontfjella, Western Dronning Maud Land, East Antarctica

by Joachim Jacobs¹, Wilfried Bauer² and Rainer Schmidt¹

Abstract: In Heimefrontfjella, western Dronning Maud Land, Grenville-age gneisses are exposed, that are part of the extensive Namaqua-Natal-Maud Belt, fringing the Zimbabwe-Kaapvaal-Grunehogna craton. The eastern portion of Heimefrontfjella was intensely reworked during Late Neoproterozoic / Early Paleozoic times. The up to 20 km wide Heimefront Shear Zone marks the western front of the Late Neoproterozoic/Early Paleozoic East African/Antarctic Orogen. It also separates distinct tectono-stratigraphic terranes and thus is an important structure in East Antarctica. The Heimefront Shear Zone is associated with a particular aeromagnetic anomaly pattern.

This study presents susceptibility data from different rock types across this shear zone, in order to give a better understanding of available aeromagnetic data of this mostly ice-covered region. The surprisingly highest susceptibilities of up to 70×10^{-3} SI units were measured in felsic gneisses which are part of a metamorphosed bimodal volcanic sequence. The highly oxidised stage of these felsic rocks is typical for magmatic protolith, originating from a lower crustal source without supracrustal involvement.

Zusammenfassung: In der Heimefrontfjella (westliches Dronning Maud-Land) sind Gneise mit spät-mesoproterozoischem („grenvillischem“) Deformationsalter aufgeschlossen, die zum langgestreckten Namaqua-Natal-Maud-Orogengürtel gehören. Dieser bildet die südliche bis südöstliche Umrandung des archaischen Zimbabwe-Kaapvaal-Grunehogna-Kraton. Der östliche Teil der Heimefrontfjella wurde in spät-neoproterozoischer/früh-paläozoischer Zeit („panafrikanisch“) intensiv tektonometamorph überprägt. Die bis zu 20 km breite Heimefront-Scherzone markiert die westliche Front des an der Wende Neoproterozoikum/Paläozoikum entstandenen „East African/Antarctic Orogen“. Die Scherzone trennt auch verschiedene spät-mesoproterozoische tektonostratigraphische Terranes und ist deshalb eine wichtige Strukturgrenze innerhalb der Ostantarktis. Sie wird auch durch eine auffällige aeromagnetische Anomalie abgebildet.

Die vorliegende Arbeit präsentiert Suszeptibilitäts-Daten von verschiedenen Gesteinstypen, die innerhalb und auf beiden Seiten der Scherzone analysiert wurden. Ziel dieser Arbeit war es, eine bessere Interpretation von aeromagnetischen Daten in dieser überwiegend eisbedeckten Region zu ermöglichen. Überraschenderweise lieferten felsische Gneise einer bimodalen Sequenz die höchsten Suszeptibilitäten mit bis zu 70×10^{-3} SI-Einheiten. Diese felsischen Gneise entstanden aus magmatischen Vorläufergesteinen die unter hohen Sauerstoffpartialdrücken kristallisierten. Dies ist typisch für Magmatite, die durch Aufschmelzung kontinentaler Unterkruste ohne Beimengungen suprakrustaler Komponenten entstanden.

INTRODUCTION

Heimefrontfjella in western Dronning Maud Land forms part of the several thousand kilometres long Namaqua-Natal-Maud Belt (Fig. 1). This c. 1100 Ma orogenic belt fringes the southern and eastern margin of the Zimbabwe-Kaapvaal-Grunehogna Craton (e.g. JACOBS et al. 1993). The high-grade Namaqua-Natal-Maud Belt is interpreted to have resulted from continent-continent collision with an unknown counter-

part, possibly Laurentia (DALZIEL et al. 2000). The eastern part of the orogen was intensely overprinted during the collision of East and West Gondwana, along the c. 550 Ma East African/Antarctic Orogen (JACOBS et al. 1998). The western orogenic front of this orogen is thought to be exposed in Heimefrontfjella (GOLYNSKY & JACOBS 2001).

The Namaqua-Natal-Maud Belt is fragmentarily exposed along its length. In southern Africa, it is widely covered by sedimentary rocks of the Karoo Supergroup; in Antarctica, it is mostly hidden under the ice and is only exposed in a few places such as Heimefrontfjella. However, the orogen is characterised by a distinct anomaly pattern, so that the structure of the orogen can easily be traced under the various cover. It also makes it distinguishable from the Zimbabwe-Kaapvaal-Grunehogna craton to the north (DE BEER & MEYER 1983, CORNER & GROENEWALD 1991). The anomaly pattern of the orogen is characterised by craton-parallel, very elongate high-amplitude positive and negative anomalies, with long wavelength. The largest of these anomalies is the Beattie anomaly in southern Africa (Fig. 1). This anomaly could represent a Grenville-age suture. The characteristic anomalies can be traced into East Antarctica, where they sharply terminate at the Heimefront Shear Zone (Fig. 2). East of the Heimefront Shear Zone, these anomalies are not existent since the Namaqua-Natal-Maud Belt has been intensely reworked by the c. 550 Ma East African/Antarctic Orogen. In Heimefrontfjella, Grenville-age and Pan-African structures trend at almost right angles, so that the temporally different magnetic anomalies can readily be differentiated. This is different further to the NE, such as in Sverdrupfjella, where Grenville-age and Pan-African structures are co-linear and are often indistinguishably superimposed. Pan-African structures east of the Heimefront Shear Zone are represented by low-amplitude and short wavelength magnetic anomalies.

In this study we measured the magnetic susceptibilities of the different lithologies east, west and within the Heimefront Shear Zone in order to understand which rock types and/or structures are the main sources of the magnetisation at the surface. It is thought that this would lead to a better understanding of the magnetic anomaly pattern seen in the different terranes, and would help to understand ongoing and future aeromagnetic studies in the large ice covered areas of East Antarctica.

GEOLOGICAL SETTING

Heimefrontfjella is characterised by three distinct tectono-stratigraphic terranes, the Kottas, Sivorg and Vardeklettane terranes (Fig. 3), the geology of which is summarised in JACOBS et al. (1996). The Kottas and Vardeklettane terranes are separated from the Sivorg terrane by the up to 20 km wide

¹ Fachbereich Geowissenschaften, Universität Bremen, Postfach 33 04 40, D-28334 Bremen, Germany; <jojacobs@uni-bremen.de>

² Geologisches Institut, Rheinisch-Westfälische Technische Hochschule (RWTH) Aachen, Wüllnerstr. 2, D-52056 Aachen, Germany.

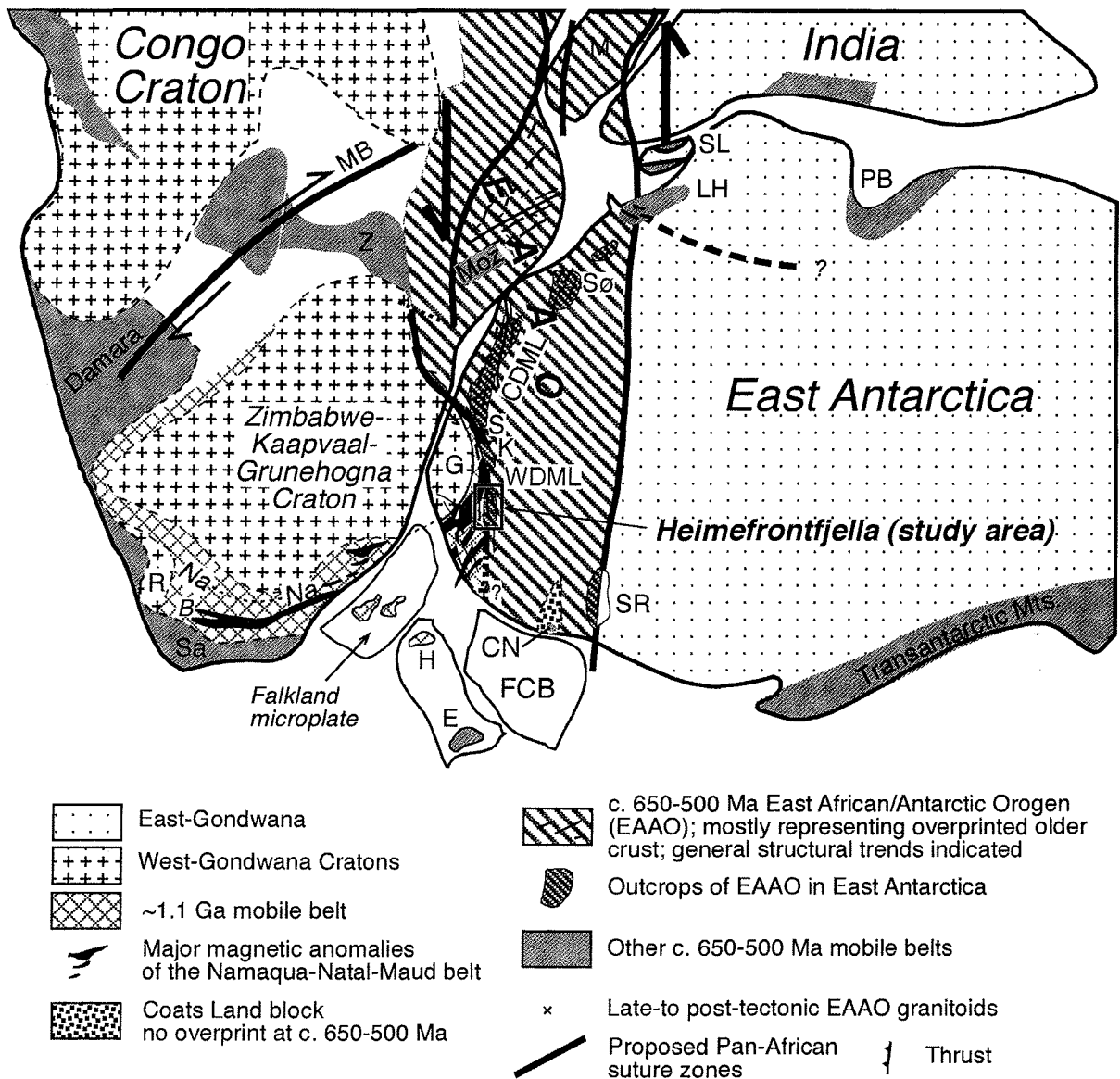


Fig. 1: Location of the study area in a Gondwana reconstruction after GRUNOW et al. (1996), SHACKLETON (1996) and JACOBS et al. (1998, 2003) with major Late Neoproterozoic/Early Palaeozoic belts indicated. The study area Heimefrontfjella is situated within the c. 1.1 Ga Maud Belt and at the western front of the c. 650-500 Ma East African/Antarctic Orogen (EAAO) in western Dronning Maud Land, East Antarctica. Abbreviations: B - Beattie magnetic anomaly, CDML - central Dronning Maud Land, CN - Coats Nunatak, EM - Ellsworth Mts, FCB - Filchner Crustal Block, G - Grunehogna Archean cratonic fragment, H - Haag Nunatak, K - Kirwanveggen, LH - Lützow Holm Bay, M - Madagascar, MB - Mwembeshi Shear Zone, Moz - Mozambique Belt, Na-Na - Namaqua-Natal Belt, PB - Prydz Bay, R - Richtersveld Craton, S - Sverdrupfjella, Sa - Saldania Belt, SL - Sri Lanka, SØ - Sør Rondane, SR - Shackleton Range, WDML - western Dronning Maud Land, Z - Zambezi Belt.

Abb. 1: Lage des Arbeitsgebiets innerhalb Gondwanas nach Rekonstruktion durch GRUNOW et al. (1996), SHACKLETON (1996) und JACOBS et al. (1998, 2003) in Beziehung zu den dominanten spät-neoproterozoischen/früh-paläozoischen Mobilgürteln. Das Arbeitsgebiet, die Heimefrontfjella, ist Teil des c. 1.1 Ga Maud Orogens und befindet sich an der westlichen orogenen Front des ca. 650-500 Ma alten East African/Antarctic Orogen (EAAO) im westlichen Dronning Maud Land.

Heimefront Shear Zone. The Kottas and Vardeklettane terrane to the NW of the shear zone lack a Pan-African overprint, whilst the Sivorg terrane to the SE of it is intensely overprinted.

The Kottas terrane is mainly made up of amphibolite facies metamorphic rocks derived from igneous protoliths. They occur as sheet-like augen gneisses, a meta-trondjemite-tonalite-diorite suite and grey biotite-plagioclase gneisses containing euhedral zircons of possible volcanic origin. Paragneisses and calcsilicate rocks, together with amphibolite slices are known, but are of restricted extent, being only

exposed in some isolated nunataks in the NE and in a syncline in the north of the Kottas terrane. The metaigneous rocks have a typical calcalkaline subduction-related signature, whereas the amphibolites in the supracrustal sequence have an oceanic affinity (BAUER 1995).

The Vardeklettane terrane is exposed in SW Heimefrontfjella and Mannefallknausane. It is made up of granulite facies rocks including charnockites, layered cordierite-sillimanite gneisses and two-pyroxene granulites. Inverted pigeonite indicate peak metamorphic temperatures in excess of 900 °C. These rocks have Grenville-age protolith ages (ARNDT et al. 1991) and K-

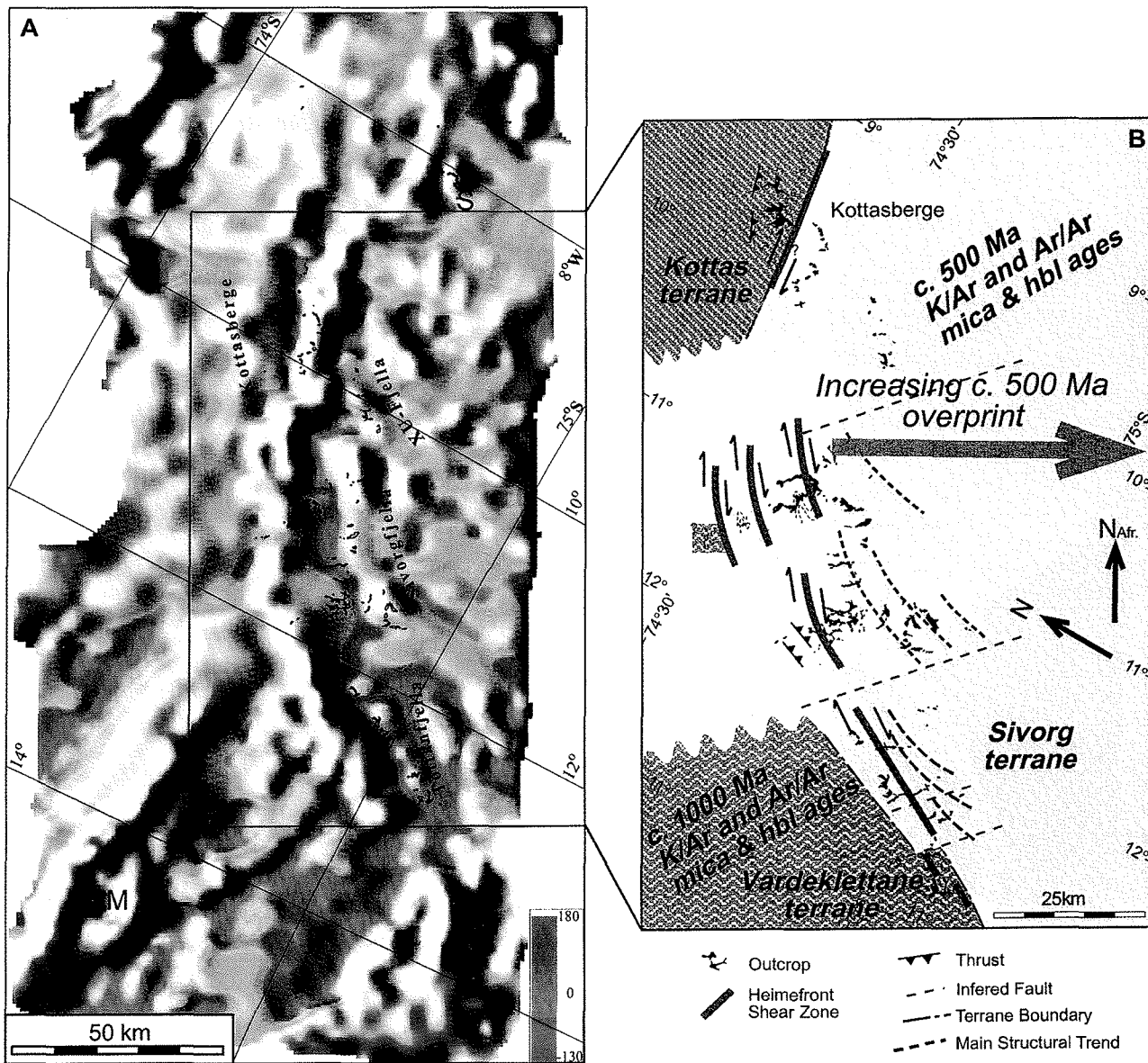


Fig. 2: A) Aeromagnetic shaded relief map (first vertical derivative) of Heimfrontfjella and adjacent areas (after GOLYNSKY & JACOBS 2001). Abbreviations: M – Mannefallknausane, S – Semberget.

B) Geological overview map of Heimfrontfjella, after rotation into its “African” position in Gondwana (after JACOBS et al. 1996). Heimfrontfjella is separated into three distinct c. 1.1 Ga tectono-metamorphic terranes. Whilst the Kottas and Vardeklettane terranes are characterised by only minor Late Neoproterozoic/Early Palaeozoic overprint in the form of discrete mylonite zones, the Sivorg terrane is typified by strong pervasive Late Neoproterozoic/Early Palaeozoic reworking. The dextral Heimfront transpression zone appears to separate crust with a weak Late Neoproterozoic/Early Palaeozoic overprint to the west from strongly overprinted crust to the east. Also indicated is a succession of mostly felsic metavolcanic rocks that appear to be highly magnetic.

Abb. 2: A) Aeromagnetic „shaded relief“ Karte (erste vertikale Ableitung) der Heimfrontfjella und angrenzender Gebiete (nach GOLYNSKY & JACOBS 2001).

B) Geologische Übersichtskarte der Heimfrontfjella nach Rotation in ihre Position innerhalb Gondwanas (nach Jacobs et al. 1996). Heimfrontfjella lässt sich in drei verschiedene ca. 1.1 Ga tectono-metamorphe Terranes unterteilen. Während das Kottas und Vardeklettane-Terrane lediglich durch geringe spät-neoproterozoische/früh-paläozoische Überprägung in Form diskreter Mylonitzonen gekennzeichnet ist, zeichnet sich das Sivorg-Terrane durch eine starke spät-neoproterozoische/früh-paläozoische Überprägung aus. Dabei trennt die dextrale Heimfront-Scherzone Kruste mit schwacher spät-neoproterozoischer/früh-paläozoischer Überprägung im Westen von starker Überprägung im Osten.

Ar mineral ages not younger than 880 Ma (JACOBS et al. 1995), proving the lack of a pervasive Pan-African overprint.

The Sivorg terrane covers the largest area in Heimfrontfjella. It is composed of a thick volcano-sedimentary sequence that is intruded by voluminous granitoids. Metasedimentary rocks consist of metapelites, calcilicites, marbles, quartzites and paragneisses. Metavolcanic rocks are made up of a bimodal sequence of felsic and mafic rocks, of which ca. 70 % are felsic rocks. Further metaigneous rocks occur as megacrystic augen gneisses, pegmatites, aplites and amphibolites. The

metaigneous rocks of the Sivorg terrane have crystallisation ages of c. 1100 Ma and K-Ar and Ar-Ar cooling ages of c. 500 Ma (JACOBS et al. 1995, 1997, 2003).

Within the up to 20 km wide Heimfront Shear Zone, rocks of the three different terranes have been mylonitised to different degrees. The shear zone is steeply inclined and has a pronounced curvilinear outline. It is not clear whether the Heimfront Shear Zone was initiated during Pan-African times or has an older Grenville-age history. However, its Pan-African history is characterised by dextral transpression. In its

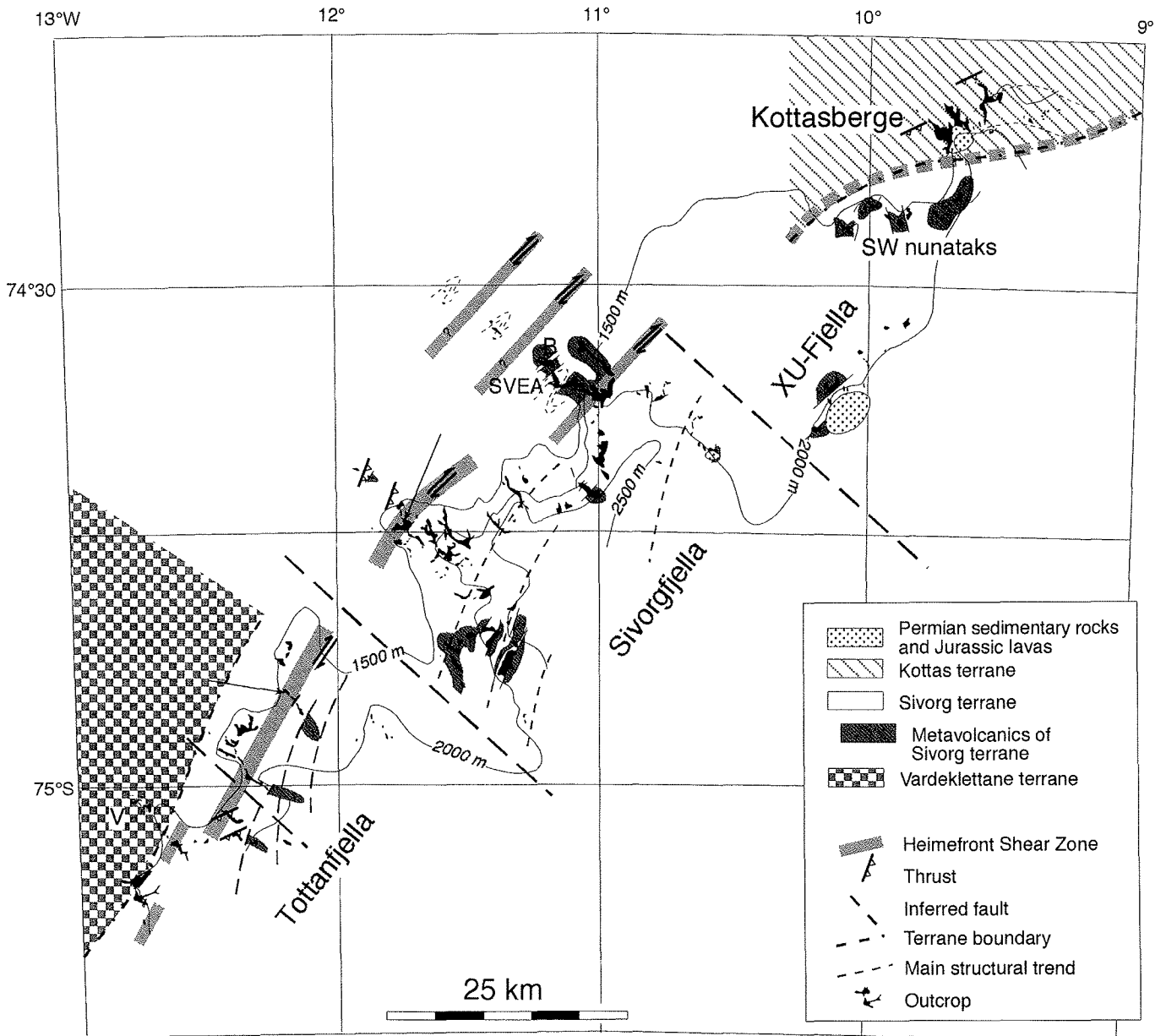


Fig. 3: Geological overview map of Heimefrontfjella with place names and the locations of major, highly magnetic metavolcanic sequences. Abbreviations: B - Boyesenuten, V - Vardeklettane.

Abb. 3: Geologische Übersichtskarte der Heimefrontfjella und Lokation dominanter, stark magnetisierter Metavulkanit-Abfolgen.

northern part the transcurrent component dominates, whilst towards the south compressional elements increase, indicated by the increasingly downdip orientation of the mylonitic stretching lineations towards the south (JACOBS et al. 1996).

Post-tectonic rocks include Permo-Carboniferous sedimentary rocks of the Beacon Supergroup, that unconformably overly the basement in a few isolated places in the northern and central part of the range. Jurassic dykes and sills intrude these rocks in small quantities locally.

MAGNETIC SUSCEPTIBILITIES

Magnetic susceptibilities were measured using a Kappa metre, Explorarium KT-9, in pin mode. Measurements were carried out at almost 350 localities within the Kottas and Sivorg terranes and the Heimfront Shear Zone. At each locality ten

measurements were taken within an area of up to 10 m². The means of these ten analyses are plotted in Figures 4a-f. Typical standard deviations are 10-20 %, occasionally higher. Susceptibility measurements were carried out on all major and minor lithologies as well as on different shear zones. From the Vardeklettane terrane no field measurements are available however, representative measurements on 23 rock specimens were carried out in the laboratory with a Kappa metre, Explorarium KT-5, in normal mode. For the latter measurements only rock samples with a volume of 10 cm³ or larger were analysed. It was attempted to use even rock surfaces.

Kottas terrane

Within the Kottas terrane magnetic susceptibilities were carried out at 79 localities. The analysed lithologies included paragneisses and metatuffites, migmatites, augen gneisses, a

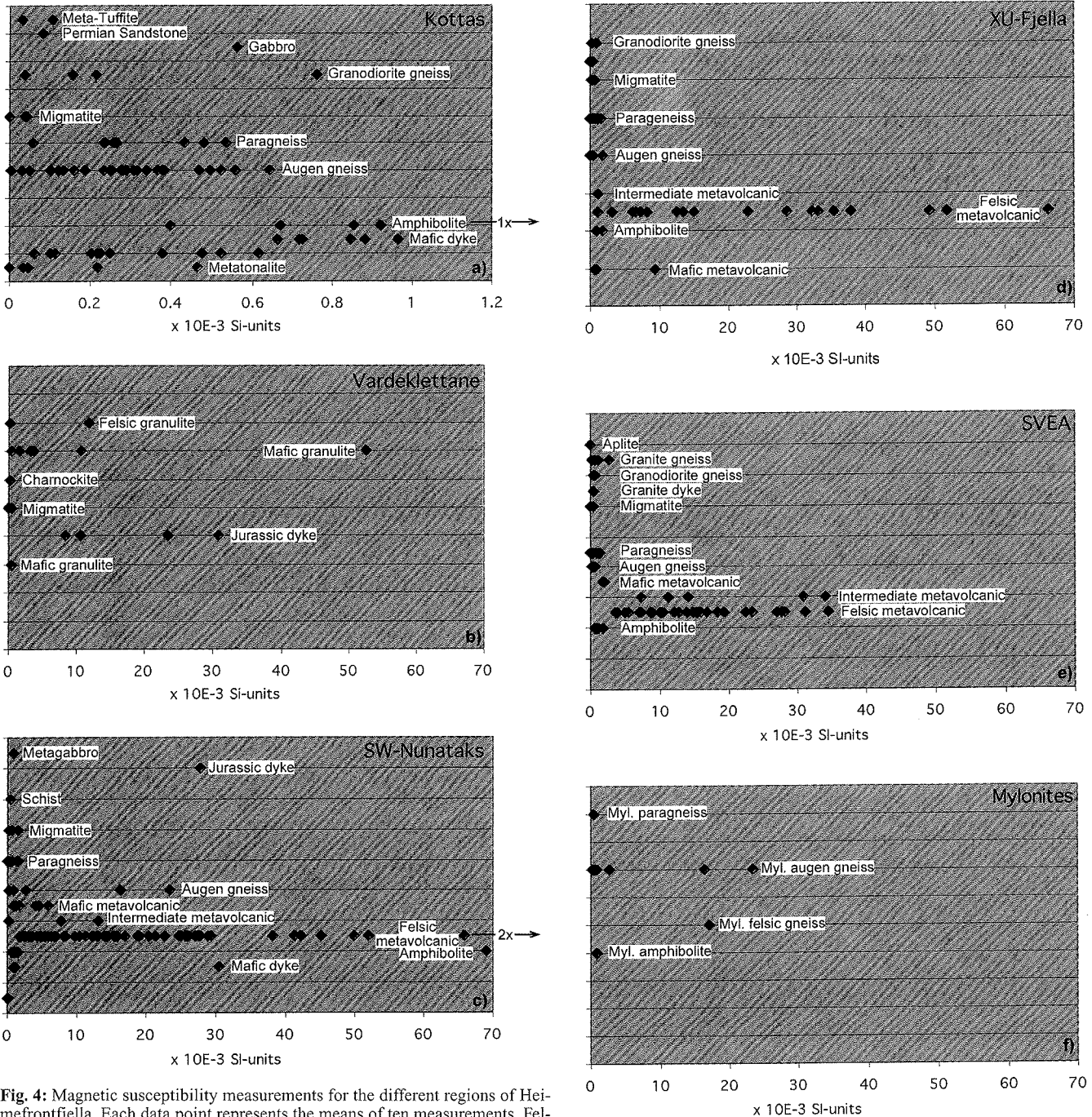


Fig. 4: Magnetic susceptibility measurements for the different regions of Heimfrontfjella. Each data point represents the means of ten measurements. Felsic to medium metavolcanic rocks from the Sivorg terrane gave consistently high susceptibilities.

Abb. 4: Magnetische Suszeptibilitätsdaten der verschiedenen Regionen der Heimfrontfjella. Jeder Datenpunkt repräsentiert die Mittelwerte von zehn Einzelanalysen. Felsische bis intermediäre Metavulkanite ergaben konsistent hohe Suszeptibilitäten.

granodiorite gneiss and a distinct metatonalite, pegmatites, mafic dykes (metamorphic), amphibolites, a small gabbro and a Permian sandstone (Fig. 4a). Except for one analysis from an amphibolite, all analyses show very little variations with usually very low susceptibilities, not exceeding 1×10^{-3} SI units. As expected, largest susceptibilities were determined from mafic rocks. However, only one small amphibolite had high susceptibilities of c. 130×10^{-3} SI units. In general, most rocks showed lower susceptibilities than one would expect from their unmetamorphosed protolith.

Vardeklettane terrane

From the Vardeklettane terrane only a few measurements from granulite rock specimens are available (Fig. 4b). Mafic granulites gave highest susceptibilities of up to 60×10^{-3} SI units and show a large variability. Post-tectonic dolerite dykes of probably Jurassic age also gave high susceptibilities of up to 30×10^{-3} SI units. Further rocks analysed included felsic granulites, charnockites and migmatites, all of which have relatively low susceptibilities.

Sivorg terrane

Within the Sivorg terrane magnetic susceptibility measurements were carried out at 260 localities. Measurements were



Fig. 5: Typical appearance of a succession of felsic and mafic gneisses interpreted to represent metavolcanic rocks, Boyesenuten, Sivorgfjella.

Abb. 5: Typisches Erscheinungsbild einer Abfolge von felsischen und mafischen Gneisen, die als eine Abfolge von Metavulkaniten interpretiert wird (Boyesenuten, Sivorgfjella).

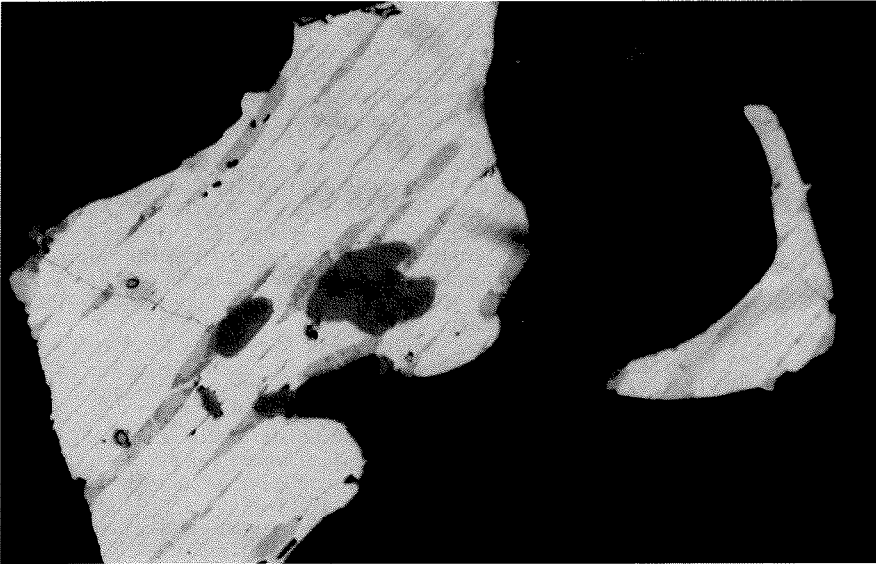


Fig. 6: Magnetite crystal with large exsolution lamellae of ilmenite; reflected polarised light, width of view 0.216 mm.

Abb. 6: Magnetitkristall mit Ilmenit-Entmischungslamellen; reflektiertes polarisiertes Licht, Bildbreite 0,216 mm.

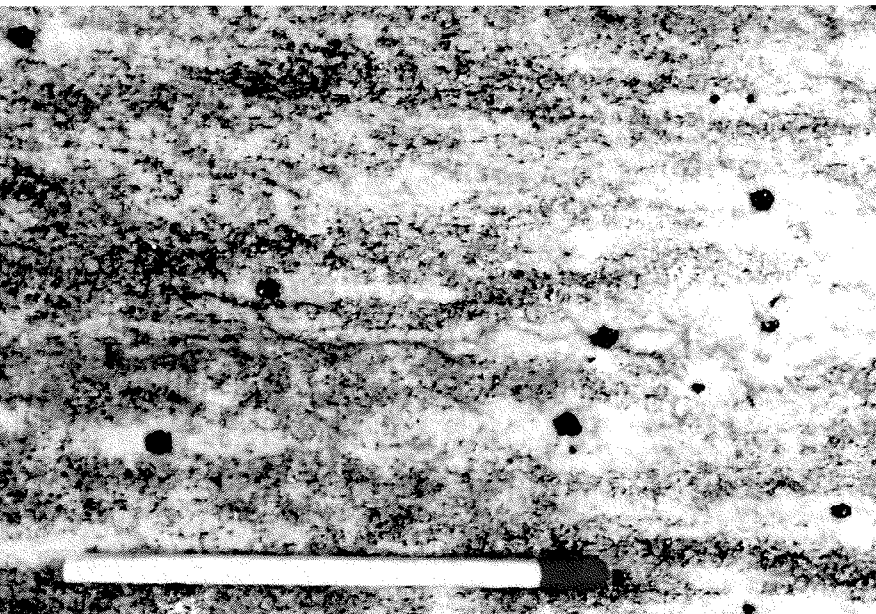


Fig. 7: Pink felsic gneiss interpreted as a felsic metavolcanic rock, with reaction zone around magnetite (polished specimen).

Abb. 7: Rosarote felsische Gneise, die als felsische Metavulkanite interpretiert werden; mit Reaktionszone um Magnetit (polierte Probe).

could have been introduced during subduction could have caused an overall reducing environment for these rocks, resulting in low susceptibilities.

Mylonites from the Heimefront Shear Zone do not show significantly higher susceptibilities, suggesting that mobile elements such as alkalis, silica and LILE were not removed during deformation. Otherwise, immobile elements like Fe and Ti should be relatively enriched in this shear zone.

CONCLUSIONS

The area SE of the Heimefront Shear Zone was intensely reworked during Late Neoproterozoic/Early Palaeozoic times, resulting in an entirely different magnetic anomaly pattern on either side of the shear zone. Highest susceptibilities were measured in felsic metavolcanic rocks SE of the Heimefront Shear Zone. The susceptibilities of the felsic metavolcanic rocks exceed the susceptibilities of associated amphibolites on the order of about one magnitude. In the metavolcanic rocks, magnetite is the main magnetic mineral, formed by metamorphic reactions in excess of annite within oxidised rocks that lack supracrustal involvement. Thus far, these highly magnetised rocks are not clearly recognised in available aeromagnetic surveys, because the flight-line spacing of 5 km is probably too large to resolve these units. A narrower flight line spacing and an appropriate flying altitude would probably decipher the Late Neoproterozoic/Early Palaeozoic structures along the orogenic front of the East African/Antarctic Orogen with good resolution and would significantly help in the understanding of this structurally complex region at the southern extension of the East African/Antarctic Orogen.

ACKNOWLEDGMENT

This project was supported in part by Deutsche Forschungsgemeinschaft grants Ja 617/14+16 to J. Jacobs and Ba 1636/5 to W. Bauer. The field work would have not been possible without the help and logistic support of the Alfred Wegener Institute for Polar and Marine Research. Reviews by Wilfried Jokat and Georg Kleinschmidt are kindly acknowledged.

References

- Arndt, N.T., Todt, W., Chauvel, M., Tapfer, M. & Weber, K. (1991): U-Pb zircon age and Nd isotopic composition of granitoids, charnockites and supracrustal rocks from Heimefrontfjella, Antarctica.- *Geol. Rundschau* 80: 759-777.
- Bauer, W. (1995): Strukturentwicklung und Petrogenese der nördlichen Heimefrontfjella (westliches Dronning Maud Land / Antarktika).- *Ber. Polarforschung* 171: 1-222.
- Bauer, W., Jacobs, J., Fanning, C.M. & Schmidt, R. (2003): Late Mesoproterozoic arc and back-arc volcanism in the Heimefrontfjella (East Antarctica) and implications for the palaeogeography at the southeastern margin of the Kaapvaal-Grünhegna Craton.- *Gondwana Res.* 6: 449-465.
- Blevin, P.L. (1996): Using magnetic susceptibility meters to interpret the oxidation state of granitic rocks.- 13th Australian Geol. Convention. Geol. Soc. Australia, Abstracts, 1-40.
- Clark, D.A. (1999): Magnetic petrology of igneous intrusions: implications for exploration and magnetic interpretation.- *Exploration Geophys.* 30: 5-26.
- Corner, B. & Groenewald, P.B. (1991): Gondwana reunited.- *S. African J. Antarctic Res.* 21: 172.
- Dalziel, I.W.D., Mosher, S. & Gahagan, L.M. (2000): Laurentia-Kalahari collision and the assembly of Rodinia.- *J. Geol.* 108: 499-513.
- De Beer, J.H. & Meyer, R. (1983): Geoelectrical and gravitational characteristics of the Namaqua-Natal mobile belt and its boundaries.- *Spec. Publ. Geol. Soc. S. Africa* 10: 91-100.
- Golynsky, A. & Jacobs, J. (2001): Grenville-age versus Pan-African magnetic anomaly imprints in western Dronning Maud Land, East Antarctica.- *J. Geol.* 109: 136-142.
- Grunow, A., Hanson, R. & Wilson, T. (1996): Were aspects of Pan-African deformation linked to Iapetus opening? - *Geology* 24: 1063-1066.
- Ishihara, S. (1981): The magnetite-series and ilmenite-series granitic rocks.- *Mining Geol.* 27: 293-305.
- Ishihara, S., Robb, L.J., Anhaeusser, C.R. & Imai, A. (2002): Granitoid series in terms of magnetic susceptibility: A case study from the Barberton Region, South Africa.- *Gondwana Res.* 5: 581-589.
- Jacobs, J., Thomas, R.J. & Weber, K. (1993): Accretion and indentation tectonics at the southern edge of the Kaapvaal craton during the Kibaran (Grenville) orogeny.- *Geology* 21: 203-206.
- Jacobs, J., Ahrendt, H., Kreutzer, H. & Weber, K. (1995): K-Ar, 40Ar-39Ar and apatite fission track evidence for Neoproterozoic and Mesozoic basement rejuvenation events in the Heimefrontfjella and Mannefallknäusane (East Antarctica).- *Precambrian Res.* 75: 251-263.
- Jacobs, J., Bauer, W., Spaeth, G., Thomas, R.J. & Weber, K. (1996): Lithology and structure of the Grenville-aged (~1.1 Ga) basement of Heimefrontfjella (East Antarctica).- *Geol. Rundschau* 85: 800-821.
- Jacobs, J., Falter, M., Weber, K. & Jeßberger, E.K. (1997): 40Ar-39Ar evidence for the structural evolution of the Heimefront Shear Zone (Western Dronning Maud Land), East Antarctica.- In: C.A. RICCI (ed.), *The Antarctic Region: Geological evolution and processes*, 37-44, Terra Antarctica Publication, Siena.
- Jacobs, J., Fanning, C.M., Henjes-Kunst, F., Olesch, M. & Paech, H.-J. (1998): Continuation of the Mozambique Belt into East Antarctica: Grenville-age metamorphism and polyphase Pan-African high-grade events in central Dronning Maud Land.- *J. Geol.* 106: 385-406.
- Jacobs, J., Fanning, C.M. & Bauer, W. (2003): Timing of Grenville-age vs. Pan-African medium- to high grade metamorphism in western Dronning Maud Land (East Antarctica) and significance for correlations in Rodinia and Gondwana.- *Precambrian Res.* 125: 1-20.
- Shackleton, R.M. (1996): The final collision zone between East and West Gondwana: where is it? - *J. African Earth Sci.* 23: 271-287.
- Wahlen, J.B. & Chappell, B.W. (1988): Opaque mineralogy and mafic mineral chemistry of I- and S-type granites of the Lachlan Fold Belt, southeast Australia.- *Amer. Mineral.* 73: 281-296.
- Wones, D.R. & Eugster, H.P. (1965): Stability of biotite: experiment, theory and application.- *Amer. Mineral.* 50: 1228-1272.