

UNIVERSITY OF CALIFORNIA
SCRIPPS INSTITUTION OF OCEANOGRAPHY

JAPANYON EXPEDITION

June - September 1961

LIST OF SEDIMENT CORES, LEGS II, IV AND V

Copied from Shipboard Logs.

Depths Corrected by Matthews' Tables.

(Some samples from this Expedition are designated
JPN, and others JAP. All should be changed to JYN.)

JAPANYON Expedition, Legs II, IV and V 1001 30 1000

- JYN II-1G: 10 June 1961, 1305-1500 hrs.; 24° 34' N, 162° 28' W; depth 4940 m.; core length 60 cm. Brown clay (lower part lost, top undisturbed). Smooth bottom; sub-bottom reflection at approx. 8 fm.
- JYN II-2G: 11 June 1961, 1300-1430 hrs.; 27° 32' N, 166° 28' W; depth 4950 m.; no core, but a smear of brown clay on the side of the ball-breaker.
- JYN II-3G: 12 June 1961, 1312-1442 hrs.; 30° 19' N, 170° 21' W; depth 5490 m.; core length 40 cm. Brown clay with some sand-size particles (?ash?). Core soft, possibly disturbed. Low relief.
- JYN II-4G: 13 June 1961, 1530-1725 hrs.; 33° 04' N, 174° 15' W; depth 5530 m.; core length 180 cm. (approx. 10 cm. lost from top due to over-penetration). Brown clay. Low relief.
- JYN II-5G: 14 June 1961, 1305-1425 hrs.; 35° 25' N, 177° 43' W; depth 4320 m.; core length approx. 170 cm. (top possibly lost or disturbed). Light brown mud, with light grey mottling in the uppermost 40 cm. Low relief.
- JYN II-6G: 16 June 1961, 1306-1445 hrs.; 37° 56' N, 178° 10' E; depth 5250 m.; core length 180 cm. Brown clay. Hilly topography.
- JYN II-7G: 17 June 1961, 1310-1425 hrs.; 40° 12' N, 173° 59' E; depth 4340 m.; core length 170 cm. Brown mud, with light grey patches in the upper 60 cm.
- JYN II-8G: 18 June 1961, 0020 hrs.; 40° 29' N, 172° 33' E; depth 4250 m.; core length 165 cm. Brown mud, with grey patches in the upper 50 cm. Mn nodule at the bottom (in the core-nose). Top of a small seamount.
- JYN II-9G: 18 June 1961, 0827-1025 hrs.; 40° 30' N, 170° 48' E; depth 5460 m. No core - only some rust-colored rock fragments, some with Mn coatings. Eastern slope of a seamount.
- JYN II-10G: 18 June 1961, 1435-1620 hrs.; 40° 30' N, 169° 48' E; depth 5550 m.; core length 170 cm. Brown mud.
- JYN II-11'G: 19 June 1961; 39° 26' N, 168° 05' E; depth 4750 and 4590 m. No core in two attempts. West slope of a seamount, close to top.
- JYN II-11G: 20 June 1961, 0830-1010 hrs.; 39° 56' N, 165° 32' E; depth 5350 m.; core length 70 cm. Brown mud. Low relief; double bottom.
- JYN II-12G: 22 June 1961, 0830-1030 hrs.; 39° 47' N, 160° 53' E; depth 5510 m.; core length 180 cm. Brown mud above, dark grey mud below. Low relief; sub-bottom reflection close to surface.

- JYN II-13G: 22 June 1961, 2012-2250 hrs.; 39°48'N, 158°31'E; depth 5620 m.; core length 165 cm. There is some possibility that the corer hit bottom twice. Low relief.
- JYN II-14G: 23 June 1961, 1033-1215 hrs.; 39°19'N, 156°57'E; depth 5635 m.; core length 150 cm. Clay, brown at top, grey below. On slope of an 80 fm. hill.
- JYN II-15G: 23 June 1961, 2010-2245 hrs.; 38°13'N, 157°16'E; depth 5670 m.; core length 140 cm. Brown clay in top third, grey below. There is some possibility that the corer hit bottom twice.
- JYN II-16G: 25 June 1961, 1250-1423 hrs.; 39°06'N, 153°50'E; depth 5610 m.; core length 8 cm. (badly preserved, partly washed out). Brown and grey mud. Flat bottom.
- JYN II-17G: 25 June 1961, 2015-2205 hrs.; 38°28'N, 153°10'E; depth 5690 m.; core length 120 cm. Brown mud at top, grey below. Very low relief.
- JYN II-18G: 26 June 1961, 1050-1230 hrs.; 38°04'N, 151°08'E; depth 5850 m.; core length 100 cm. Top of core may be disturbed. Brown mud above, grey below. Small fragments of Mn nodule in core-nose. Near a small hill.
- JYN II-19G: 26 June 1961, 2112-2318 hrs.; 37°46'N, 149°49'E; depth 5910 m.; core length 120 cm. Grey mud, brown at top. Low relief.
- JYN II-20G: 27 June 1961, 0810-1051 hrs.; 37°04'N, 148°14'E; depth 5730 m.; core length 120 cm. Blue-grey mud, brown at top. Flat bottom.
- JYN II-21G: 27 June 1961, 2010-2200 hrs.; 36°29'N, 146°43'E; depth 5720 m.; core length 140 cm. Blue-grey mud, brown at top with small Mn nodules. Low relief.
- JYN II-22G: 29 June 1961, 1300-1440 hrs.; 37°21'N, 144°30'E; depth 5650 m.; core length 70 cm. Grey mud, with sand at bottom; brown at top. At the base of a seamount.
- JYN IV-1G: 2 August 1961, 1248 hrs.; 33°47'N, 142°35'E; depth 6080 m. No core (corer did not reach bottom).
- JYN IV-2G: 2 August 1961, 1818-2019 hrs.; 33°28'N, 143°06'E; depth 5440 m. No core (corer did not reach bottom).
- JYN IV-3G: 3 August 1961, 1257-1513 hrs.; 32°27'N, 145°15'E; depth 5765 m. No core. Corer reached bottom -- ball broke and filled with light brown mud.

- JYN IV-4G: 5 August 1961, 0248-0544 hrs.; 29°18'N, 150°42'E; depth 5880 m.; core length 172 cm. Light brown mud.
- JYN IV-5G: 5 August 1961, 2045-2245 hrs.; 27°42'N, 153°37'E; depth 5452 m.; core length 44 cm. Brown mud. Core may be somewhat disturbed.
- JYN IV-6G: 7 August 1961, 0845-1026 hrs.; 24°29'N, 160°11'E; depth 5498 m.; core length 123 cm. Brown mud. Flat bottom.
- JYN IV-7G: 8 August 1961, 1250-1431 hrs.; 22°01'N, 164°58'E; depth 5503 m.; core length 83 cm. Reddish-brown mud. Core may be somewhat disturbed.
- JYN IV-8G: 10 August 1961, 1415-1557 hrs.; 27°53'N, 170°17'E; depth 5852 m. No core - but reddish brown mud on corer. On the slope of a hill.
- Wing*
~~JYN IV-9G:~~ 10 August 1961, 1815 hrs.; 27°42'N, 170°42'E; depth 5902 m. No core. On a gentle slope.
- JYN IV-10G: 11 August 1961, 2215-0004 hrs.; 28°44'N, 173°10'E; depth 5750 m.; core length 16 cm. Brown mud. Core probably disturbed.
- JYN IV-11G: 12 August 1961, 1240-1411 hrs.; 27°42'N, 175°10'E; depth 5750 m.; core length 126 cm. Red clay, with a Mn nodule at top.
- JYN IV-12G: 13 August 1961, 0908-1100 hrs.; 27°05'N, 177°41'E; depth 5850 m.; core length 81 cm. Dark brown mud. Small rolling hills.
- Wing*
~~JYN IV-13G:~~ 13 August 1961, 2038 hrs.; 23°35'N, 178°33'E; depth 5650 m. No core (corer did not reach bottom).
- JYN IV-14G: 14 August 1961, 1018-1148 hrs.; 22°01'N, 179°51'W; depth 5172 m.; core length 94 cm. Dark brown mud. Gently rolling hills.
- JYN IV-15G: 14 August 1961 (repeated because of date line), 0905-1045 hrs.; 21°54'N, 175°33'W; depth 5450 m.; core length 104 cm. Dark brown mud.
- JYN IV-16G: 15 August 1961, 0852-1025 hrs.; 21°55'N, 171°16'W; depth 4950 m.; core length 17 cm. Red clay. Core probably somewhat disturbed. Flat bottom.
- JYN IV-17G: 16 August 1961, 0834-0954 hrs.; 21°39'N, 166°39'W; depth 4531 m.; core length 152 cm. Red clay. Small hills.
- JYN IV-18G: 17 August 1961, 0834-0955 hrs.; 21°27'N, 161°56'W; depth 4582 m.; core length 163 cm. Red clay.

- JYN V-1G: 23 August 1961, 0729-0918 hrs.; 18°16'N, 155°13'W; depth 5073 m.; core length 50 cm. Brown clayey pyroclastic silt. Flat bottom.
- JYN V-2G: 23 August 1961, 2145-2315 hrs.; 17°32'N, 154°32'W; depth 5023 m.; core length 38 cm. Greyish-brown, clayey pyroclastic silt. Flat bottom!
- JYN V-3G: 24 August 1961, 0630-0806 hrs.; 16°40'N, 153°31'W; depth 5170 m.; core length 8 cm. "Pavement" core - stiff grey pyroclastic silt with pitted, indurated, oxide-stained, non-depositional surface. Flat area between 20 fm. hills.
- JYN V-4G: 24 August 1961, 1500-1648 hrs.; 15°37'N, 152°57'W; depth 5666 m. Small sample, badly washed by water in core liner, all placed in a plastic box. Stiff, fine pyroclastic silt and clay.
- JYN V-5G: 25 August 1961, 0024-0200 hrs.; 14°29'N, 152°41'W; depth 5514 m.; core length 83 cm. Brown silty clay, rather stiff at bottom of core. On a 100 fm. rise.
- JYN V-6G: (attempt to re-occupy Challenger Stn. 264): 25 August 1961, 0324-0524 hrs.; 14°18'N, 152°37'W; depth 5666 m. No core - corer did not reach bottom.
- JYN V-7G: 25 August 1961, 0625-0812 hrs.; 14°10'N, 152°35'W; depth 5472 m.; core length 13 cm. Brown clay; at the base silty, crumbly, greyish, slightly zeolitic and sparsely fossiliferous. On a hill in rough topography (approx. 200 fm. relief).
- JYN V-8G: 25 August 1961, 1305-1448 hrs.; 13°26'N, 152°17'W; depth 5746 m.; core length 64 cm. Brown clay, lighter above, darker (and highly zeolitic) below.
- JYN V-9G: (Re-occupying Challenger Stn. 265): 25 August 1961, 2108-2306 hrs.; 12°44'N, 152°03'W; depth 5510 m.; core length 136 cm. Medium brown radiolarian clay with lighter mottles. Low hills, approx. 50 fm. relief.
- JYN V-10P: 26 August 1961, 0111-0430 hrs.; 12°43'N, 152°06'W; depth 5549 m. Core length: Section 1 (bottom of core), 77 cm; Section 2, 78 cm.; Section 3, 78 cm.; Section 4, 78 cm.; Section 5, 78 cm.; Section 6, 78 cm.; Section 7, 78 cm.; Section 8, 77 cm.; Section 9, 78 cm.; Section 10, 78 cm.; Section 11, 79 cm.; Section 12 (top of core), 72 cm. Brown radiolarian clay. Gentle 50 fm relief.
- JYN V-10PG: Simultaneously with 10P. Core length 141 cm.
- JYN V-11G: (Re-occupying Challenger Stn. 266): 26 August 1961, 1445-1621 hrs.; 11°08'N, 152°01'W; depth 5408 m.; core length 96 cm. Medium brown clay, at the bottom radiolarian and somewhat zeolitic. Low 50 fm. relief.

- JYN V-12G: 26 August 1961, 1848-2025 hrs.; 10°46'N, 151°44'W; depth 5011 m.; core length 110 cm. Brown clay, zeolitic at least at bottom. 100 fm up the slope of a seamount.
- JYN V-13G: 27 August 1961, 0415-0545 hrs.; 9°27'N, 150°42'W; depth 5100 m.; core length 73 cm. Mn nodules at top; brown clay, becoming chocolate (and highly radiolarian) below. Flat bottom.
- JYN V-14G: (re-occupying Challenger Stn. 267): 27 August 1961, 0632-0830 hrs.; 9°20'N, 150°35'W; depth 4813 m.; core length 149 cm. Mn nodule at top. Brown clay, lighter above, darker (and moderately zeolitic and radiolarian) below. 50 fm. up a 200 fm. rise.
- JYN V-15P: 27 August 1961, 1745 hrs.; 8°02'N, 149°54'W; depth 5073 m. Core length: Section 1 (bottom of core), 81 cm.; Sect. 2, 82 cm.; Sect. 3, 82 cm.; Sect. 4, 82 cm.; Sect. 5, 81 cm.; Sect. 6, 81 cm.; Sect. 7, 81 cm.; Sect. 8, 82 cm.; Sect. 9, 82 cm.; Sect. 10, 81 cm.; Sect. 11, 81 cm.; Sect. 12, 80 cm.; Sect. 13, 5 cm. plus 13 cm. fluid mud at top. At or near top, a Mn nodule. Major part of core radiolarian clay to radiolarian ooze, somewhat zeolitic at bottom. Gentle 50 fm. relief.
- JYN V-15PG: Simultaneously with 15P.
- JYN V-16P: (re-occupying Challenger Stn. 268): 28 August 1961, 0130-0412 hrs.; 7°44'N, 149°44'W; depth 5168 m. Core length; Section 1 (bottom of core), 81 cm.; Sect. 2, 80 cm.; Sect. 3, 78 cm.; Sect. 4, 28 cm. Alternating radiolarian clay and calcareous ooze, stiff, probably Middle Tertiary. At the bottom of a very gentle 100 fm. rise.
- Core barrel bent because of rather short penetration into stiff sediment. On extrusion, core shot out in 10 to 30 cm. chunks and thus became jumbled. The chunks are fitted together (fairly confidently) in the sections listed above. The core chunks were scraped before packaging, to minimize contamination.
- JYN V-16PG: Simultaneously with 16P. Core length, 25 cm.
- JYN V-17G: 28 August 1961, 1536-1703 hrs.; 6°05'N, 148°52'W; depth 5036 m.; core length, 75 cm. Mn nodule on top of dark brown clay (highly radiolarian, at least at bottom). Low rolling hills.
- JYN V-18G: 28 August 1961, 2323 hrs.; 5°01'N, 148°33'W; depth 4952 m. Medium brown, clayey siliceous ooze with few calcareous microfossils. Flat bottom.
- JYN V-19G: 29 August 1961, 0751-0915 hrs.; 6°28'N, 148°23'W; depth 4690 m.; core length 100 cm. Medium brown clay or radiolarian ooze (may be Miocene at bottom). Flat spot in an area of gentle 50 fm. relief.

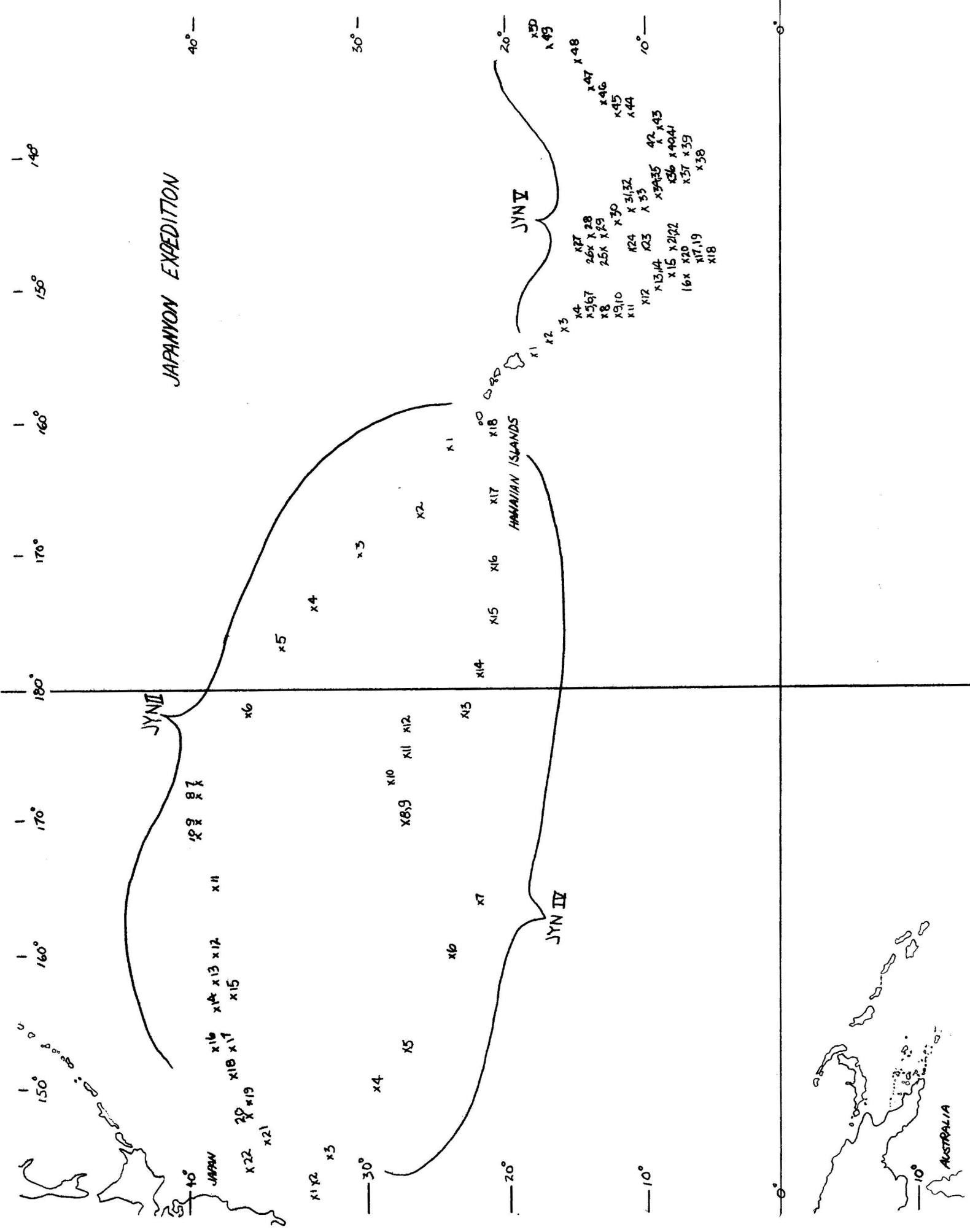
- JYN V-20P: 29 August 1961, 1651-2012 hrs.; 7°17'N, 148°12'W; depth 4925 m. Core length: Section 1 (bottom of core), 80 cm.; Sect. 2, 80 cm.; Sect. 3, 83 cm.; Sect. 4, 79 cm.; Sect. 5, 81 cm.; Sect. 6 (top of core), 56 cm. Bottom half calcareous ooze, grading to siliceous ooze above (may all be Lower Miocene). Uppermost few cm. (with Mn nodules) may be Quaternary. Region of low (50 fm.) relief.
- JYN V-20PG: Simultaneously with 20P. Core length 31 cm.
- JYN V-21G: 30 August 1961, 0110-0253 hrs.; 8°01'N, 147°58'W; depth 5234 m. No core obtained. Flat bottom.
- JYN V-22G: 30 August 1961, 0845-1040 hrs.; 8°34'N, 147°47'W; depth 5184 m.; core length 70 cm. Dark brown radiolarian ooze (may be Lower Miocene). Hilly area, 50 fm. relief.
- JYN V-23P: 30 August 1961, 1851-2316 hrs.; 10°09'N, 147°33'W; depth 5241 m. Core length: Section 1 (bottom of core), 82 cm.; Sect. 2, 80 cm.; Sect. 3, 81 cm.; Sect. 4, 80 cm.; Sect. 5, 79 cm.; Sect. 6, 74 cm.; plus approx. 15 cm. fluid mud at top. At the top, a light brown siliceous ooze; in the lower half a dark brown, highly zeolitic clay.
- JYN V-23PG: Simultaneously with 23P. Core length, 163 cm.
- JYN V-24G: 31 August 1961, 0812-1002 hrs.; 11°49'N, 147°26'W; depth 5417 m.; core length 177 cm. Medium brown radiolarian clay. Region of small hills.
- JYN V-25P: 31 August 1961, 1906-2255 hrs.; 13°05'N, 147°19'W; depth 5455 m. Core length: Section 1 (bottom of core), 80 cm.; Sect. 2, 79 cm.; Sect. 3, 80 cm.; Sect. 4, 79 cm.; Sect. 5, 80 cm.; Sect. 6, 79 cm.; plus approx. 30 cm. fluid mud at top. Zeolitic radiolarian clay. Practically flat bottom, in a small shallow depression.
- JYN V-25PG: Simultaneously with 25P. Core length, 154 cm.
- JYN V-26G: 1 Sept. 1961, 0745-0927 hrs.; 14°39'N, 147°09'W; depth 5246 m.; core length 77 cm. Medium brown zeolitic clay. Near top of a 300 fm. slope, north of some rough topography.
- JYN V-27P: 1 Sept. 1961, 1718-2108 hrs.; 15°29'N, 147°04'W; depth 5424 m. Core length: Section 1 (bottom of core), 79 cm.; Sect. 2, 79 cm.; Sect. 3, 79 cm.; Sect. 4, 79 cm.; Sect. 5, 81 cm.; Sect. 6, 81 cm.; plus approx. 20 cm. fluid mud at top. Zeolitic brown clay.
- JYN V-27PG: Simultaneously with 27P. Core length 74 cm.
- JYN V-28P: 2 Sept. 1961, 0554-0939 hrs.; 14°13'N, 146°24'W; depth 4952 m. Core length: Section 1 (bottom of core), 80 cm.; Sect. 2, 82 cm.; Sect. 3, 80 cm.; Sect. 4, 82 cm.; Sect. 5, 81 cm.; Sect. 6, 70 cm. Eocene radiolarian ooze. Near top of a 200 fm. hill.
- JYN V-28PG: Simultaneously with 28P. Core length, 28 cm.

- JYN V-29G: 2 Sept. 1961, 1600-1800 hrs.; 13°32'N, 146°02'W; depth 5285 m.; core length 155 cm. Brown clay, somewhat zeolitic at least at the bottom. Topographic low in an area of 50 fm. relief.
- JYN V-30G: 2 Sept. 1961, 2235-0003 hrs.; 12°52'N, 145°35'W; depth 5104 m.; core length 111 cm. Brown clay, zeolitic at least at the bottom. On a small hill.
- JYN V-31P: 3 Sept. 1961, 0642-1033 hrs.; 11°55'N, 144°54'W; depth 5539 m. Core length: Section 1 (bottom of core), 81 cm.; Sect. 2, 81 cm.; Sect. 3, 80 cm.; Sect. 4, 82 cm.; Sect. 5, 82 cm.; Sect. 6, 60 cm.; plus approx. 25' cm. fluid mud at top of core. Mn nodule at or near top. Brown clay, slightly zeolitic. In a valley in an area of 200 fm. relief.
- JYN V-31PG: Simultaneously with 31P. Brown clay with Mn nodules at top.
- JYN V-32G: 3 Sept. 1961, 1540-1723 hrs.; 11°11'N, 144°26'W; depth 5501 m.; core length 110 cm. Brown clay; zeolitic at least at the bottom. In a valley in a region of 100 fm. relief.
- JYN V-33G: 3 Sept. 1961, 2136-2315 hrs.; 10°34'N, 144°00'W; depth 5184 m.; core length 174 cm. Light buff, slightly zeolitic radiolarian clay. Small hills, 40 fm. relief.
- JYN V-34P: 4 Sept. 1961, 0533-0910 hrs.; 9°50'N, 143°29'W; depth 5104 m. Core length: Section 1 (bottom of core), 80 cm.; Sect. 2, 81 cm.; Sect. 3, 81 cm.; Sect. 4, 80 cm.; Sect. 5, 82 cm.; Sect. 6, 76 cm. Light and dark buff, slightly zeolitic clay.
- JYN V-34PG: Simultaneously with 34P. Core length 154 cm.
- JYN V-35G: 4 Sept. 1961, 1535-1706 hrs.; 9°10'N, 143°05'W; depth 5151 m.; core length 180 cm. Quaternary radiolarian clay. Small hills, 40 fm. relief.
- JYN V-36P: 4 Sept. 1961, 2147-0054 hrs.; 8°25'N, 142°42'W; depth 5007 m. Core length, 35 cm. Chalk with siliceous microfossils (approx. Oligocene), and small Mn nodules probably from sediment surface. Top of a small, 80 fm. hill.
- JYN V-36PG: Simultaneously with 36P. Small sample, all placed in a plastic box. Chalk with Mn nodule at surface.
- JYN V-37G: 5 Sept. 1961, 0810 hrs.; 7°37'N, 142°19'W; depth 4813 m.; core length 116 cm. Buff above, dark brownish-grey below (manganous, slightly zeolitic clay). On top of a 40 fm. rise.

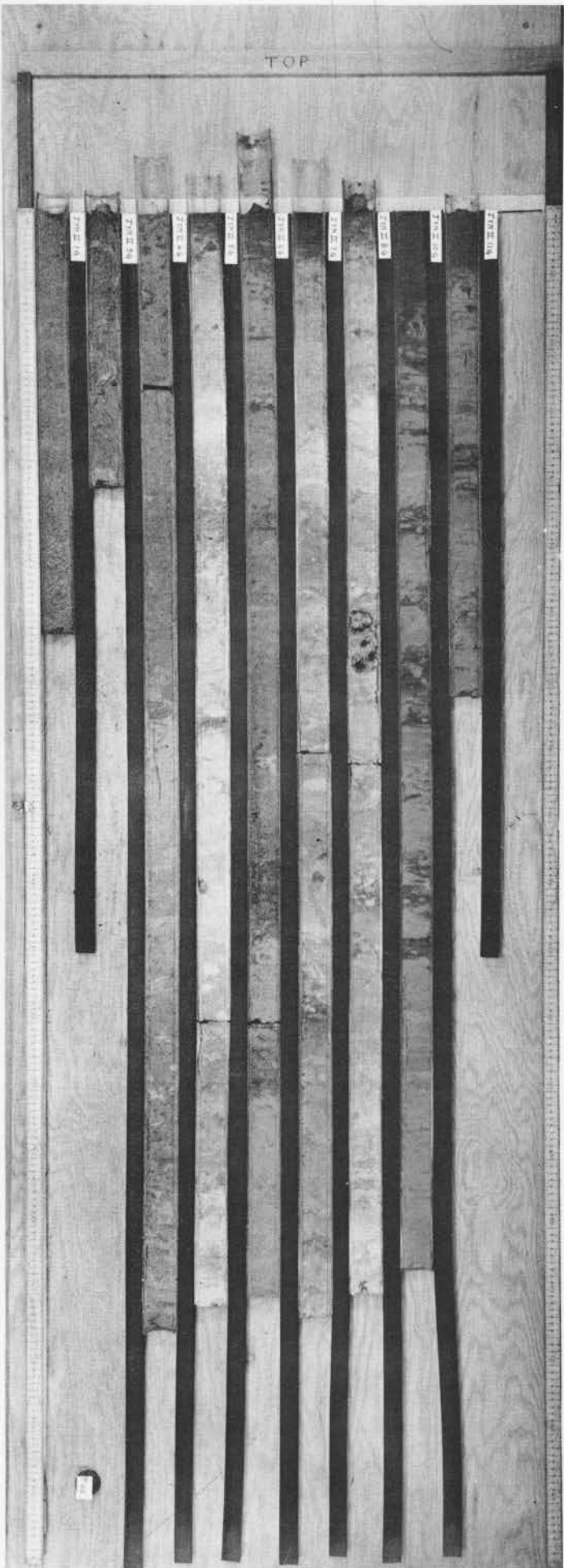
- JYN V-38P: 5 Sept. 1961, 1553-1930 hrs.; 6°30'N, 141°59'W; depth 5018 m. Core length; Section 1 (bottom of core), 80 cm.; Sect. 2, 80 cm.; Sect. 3, 81 cm.; Sect. 4, 80 cm.; Sect. 5, 79 cm.; Sect. 6, 75 cm.; plus approx. 5 cm. fluid mud at top. Radiolarian ooze, probably Late Tertiary and Quaternary.
- JYN V-38PG: Simultaneously with 38P. Core length, 105 cm.
- JYN V-39G: 6 Sept. 1961, 0648-0826 hrs.; 7°59'N, 140°50'W; depth 5188 m.; core length 71 cm. Buff clay overlying chocolate radiolarian ooze. Valley in a region of continuous 60-fm. hummocks.
- JYN V-40G: 6 Sept. 1961, 1203-1348 hrs.; 8°34'N, 140°23'W; depth 5161 m.; core length 47 cm. Buff clay above, chocolate and slightly zeolitic below. Valley in an area of 40 fm. relief.
- JYN V-41G: 6 Sept. 1961, 1357-1533 hrs.; 8°35'N, 140°21'W; depth 5087 m.; core length 125 cm. Buff and dark greyish brown clay (slightly zeolitic, at least at the bottom). Half-way up a 100 fm. rise.
- JYN V-42P: 6 Sept. 1961, 2236-0124 hrs.; 9°00'N, 139°51'W; depth 5000 m. Core length; Section 1 (Bottom of core), 79 cm.; Sect. 2, 81 cm.; Sect. 3, 80 cm.; Sect. 4, 81 cm.; Sect. 5, 81 cm.; Sect. 6, 79 cm.; plus approx. 15 cm. fluid mud at top. Buff Quaternary radiolarian ooze at top, overlying slightly zeolitic dark greyish brown and chocolate clay.
- JYN V-42PG: Simultaneously with 42P.
- JYN V-43G: 7 Sept. 1961, 0817-0950 hrs.; 9°53'N, 138°56'W; depth 4893 m.; core length 82 cm. A little buff clay overlying slightly zeolitic chocolate clay. Gentle 40 fm. relief.
- JYN V-44P: 7 Sept. 1961, 1830-2155 hrs.; 11°07'N, 137°56'W; depth 4853 m. Core length: Section 1 (bottom of core), 81 cm.; Sect. 2, 80 cm.; Sect. 3, 79 cm.; Sect. 4, 79 cm.; Sect. 5, 80 cm.; Sect. 6, 79 cm.; plus approx. 20 cm. fluid mud at top. Buff radiolarian clay.
- JYN V-44PG: Simultaneously with 44P. Core length, 169 cm.
- JYN V-45G: 8 Sept. 1961, 0830-0957 hrs.; 12°18'N, 137°04'W; depth 5043 m.; core length 154 cm. Buff radiolarian clay. Low spot in an area of 60 fm. relief.
- JYN V-46P: 8 Sept. 1961, 1756-2112 hrs.; 13°24'N, 136°11'W; depth 4822 m. Core length; Section 1 (bottom of core), 80 cm.; Sect. 2, 79 cm.; Sect. 3, 81 cm.; Sect. 4, 80 cm.; Sect. 5, 79 cm.; Sect. 6, 70 cm.; plus approx. 12 cm. clayey mud at top. Dark brown radiolarian clay overlying dark brown zeolitic clay overlying buff Middle Tertiary calcareous ooze.

- JYN V-46PG: Simultaneously with 46P. Core length 66 cm.
- JYN V-47P: 9 Sept. 1961, 0618 hrs.; 14°39'N, 135°04'W; depth 4813 m. Core length: Section 1 (bottom of core), 80 cm.; Sect. 2, 82 cm.; Sect. 3, 66 cm. Dark brown zeolitic clay, and in the catcher some lumps of whitish zeolite and a Mn nodule.
- JYN V-47PG: Simultaneously with 47P. Core length, 91 cm. Brown clay, with a Mn nodule at top.
- JYN V-48P: 9 Sept. 1961, 1921-2227 hrs.; 15°54'N, 133°57'W; depth 4606 m. Core length: Section 1 (bottom of core - partly fluid, but sequence probably preserved), 78 cm.; Sect. 2 (fluid and disturbed), approx. 70 cm.; Sect. 3 (fluid in top half, undisturbed below), 79 cm.; Sect. 4 (undisturbed), 79 cm.; Sect. 5 (undisturbed), 77 cm.; Sect. 6 (undisturbed), 80 cm.; Sect. 7 (undisturbed), 44 cm.; plus approx. 3 cm. fluid mud at top. The bulk of the core is buff Eocene calcareous ooze, with calcareous clay at the top. On the slope of a 200 fm. rise.
- JYN V-48PG: Simultaneously with 48P. Core length, 76 cm. Mn nodule at top.
- JYN V-49P: 10 Sept. 1961, 0830-1142 hrs.; 17°10'N, 132°50'W; depth 5188 m. Core length: Section 1 (bottom of core), 80 cm.; Sect. 2, 80 cm.; Sect. 3, 80 cm.; Sect. 4, 81 cm.; Sect. 5, 80 cm.; Sect. 6, 80 cm. (soft in upper 20 cm.); plus approx. 5 cm. fluid mud at top. Highly zeolitic chocolate clay. Rough area, 50 fm. relief.
- JYN V-49PG: Simultaneously with 49P. Mn nodule on top of chocolate clay.
- JYN V-50P: 10 Sept. 1961, 2009-2333 hrs.; 18°16'N, 131°46'W; depth 5210 m. Core length: Section 1 (bottom of core), 79 cm.; Sect. 2, 80 cm.; Sect. 3, 79 cm.; Sect. 4, 80 cm.; Sect. 5, 79 cm.; Sect. 6, 81 cm.; Sect. 7, 31 cm. Medium brown, slightly zeolitic clay. In an area of 10-20 fm. relief.
- JYN V-50PG: Simultaneously with 50P. Core length, 139 cm.

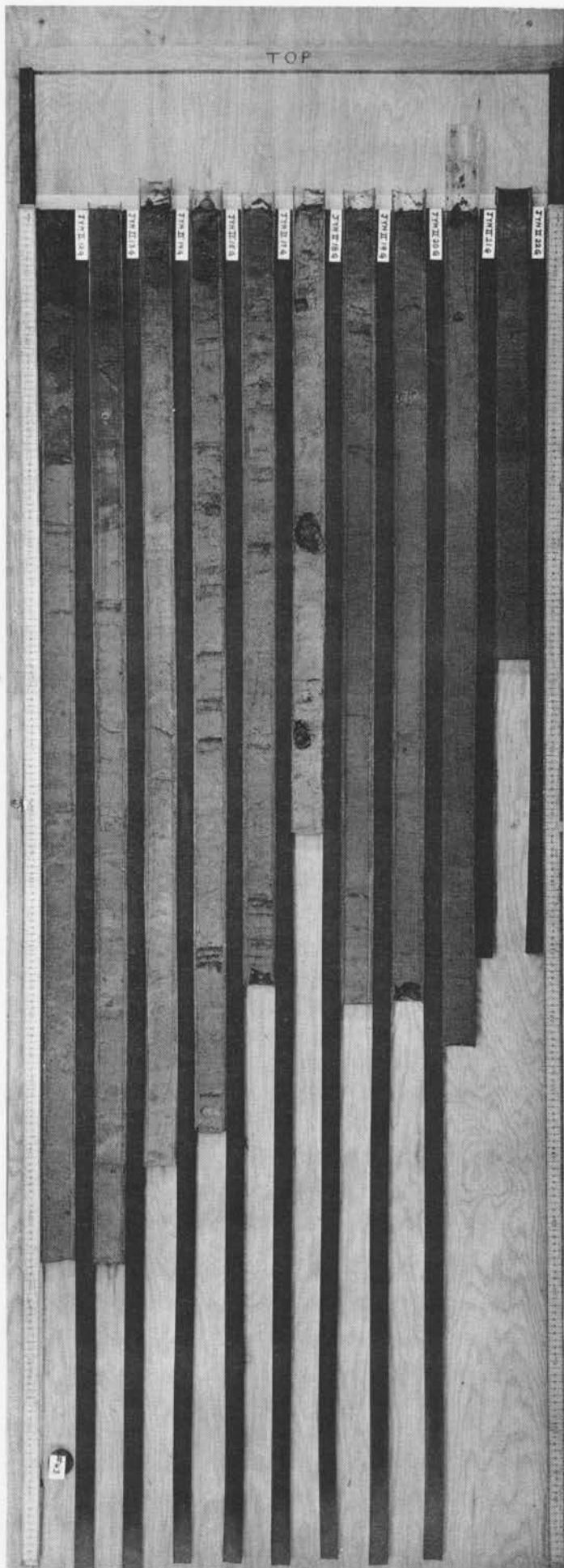
JAPANON EXPEDITION



TOP



TOP



TOP

TOP

1000000

1000000

1000000

1000000

1000000

1000000

1000000

1000000

1000000

1000000

1000000

1000000

1000000

JANSON EXPEDITION
(Left)
June/Sept. 1961

1000000

1000000

TOP

100-2001
100-2002
100-2003
100-2004
100-2005
100-2006
100-2007
100-2008
100-2009
100-2010

TOP

100-2011

100-2011
100-2012
100-2013
100-2014
100-2015
100-2016
100-2017
100-2018
100-2019
100-2020

JAPANESE REPERTORY
(Lac. V)
Jan/Apr 1961

8

8

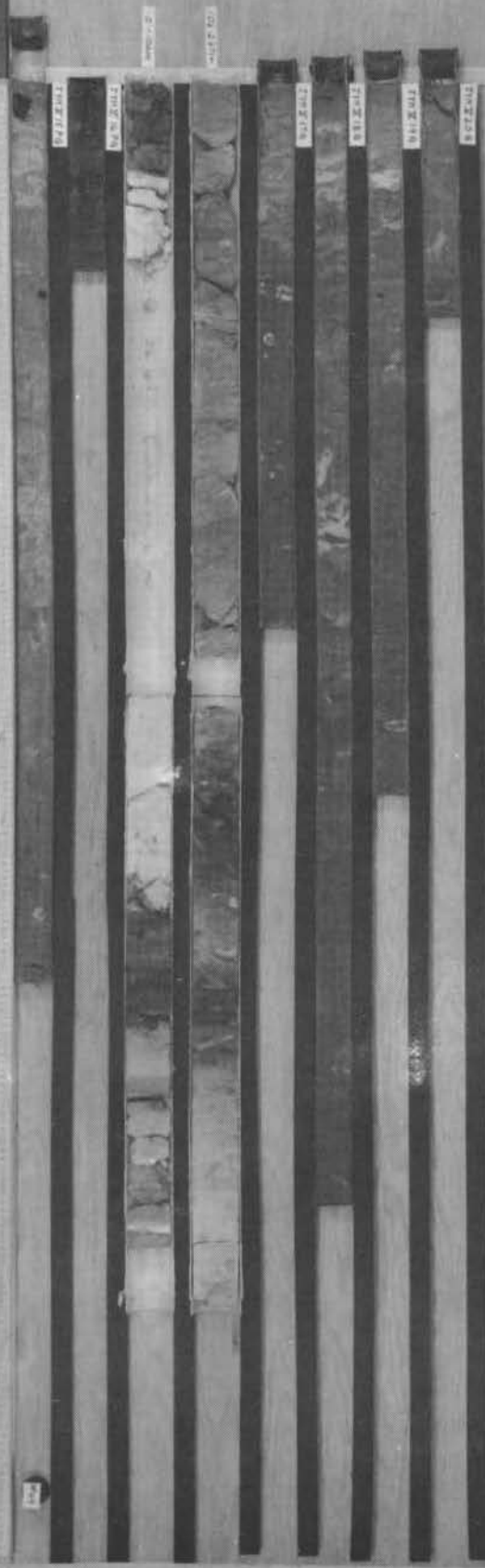
TOP

TOP 200



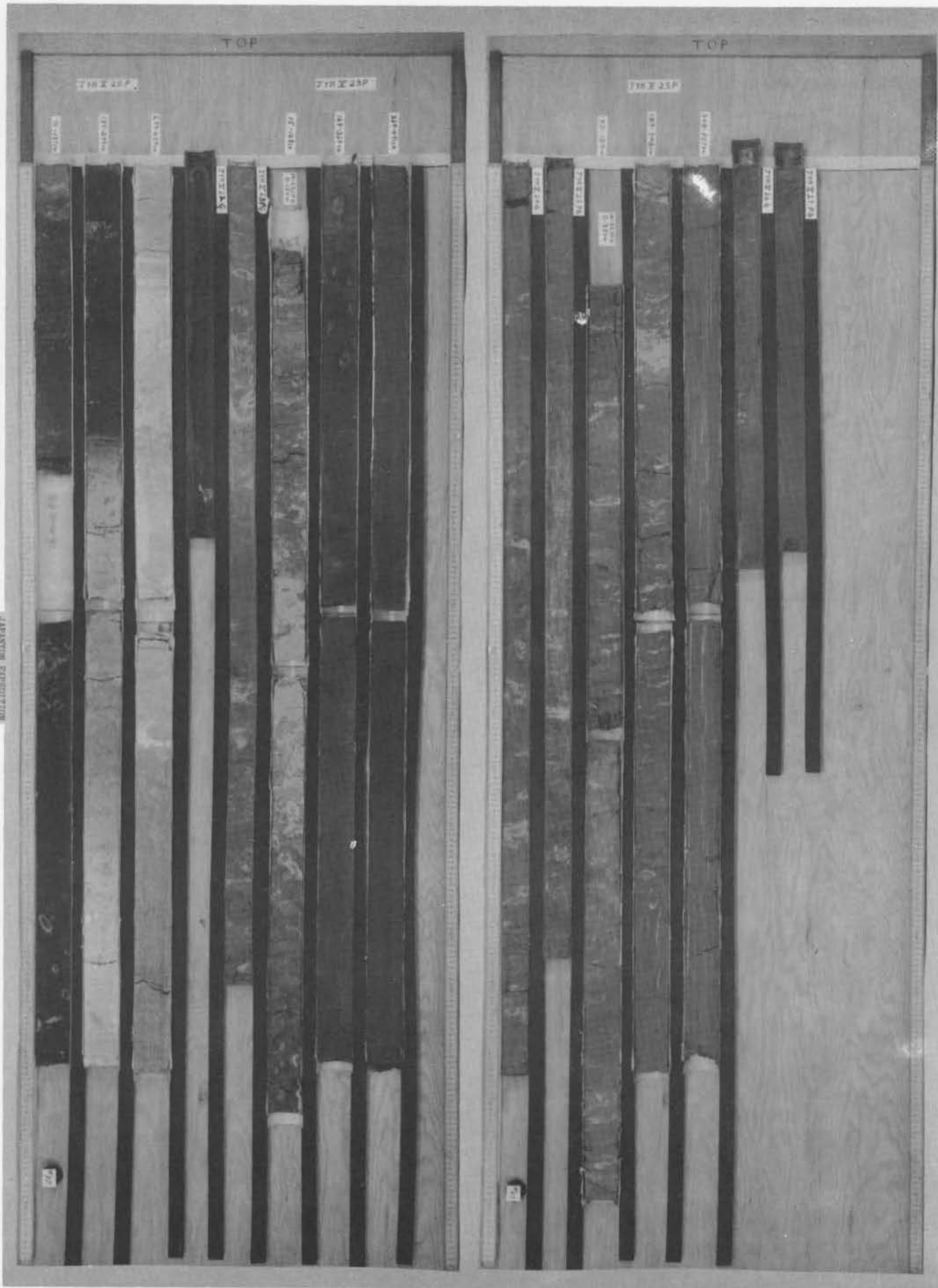
TOP

TOP 200



APPARATUS EVALUATION
 (Last 1/2)
 June/Sept. 1961

JAPANESE EXPEDITION
1961



1965-1966/1967
(A. 807)
MONTAGNER HOLLY AVF

TOP

1965-1966

1967-1968

1965-1966

1967-1968

1965-1966

1967-1968

1965-1966

1967-1968

1965-1966

TOP

1965-1966

1965-1966

1967-1968

1965-1966

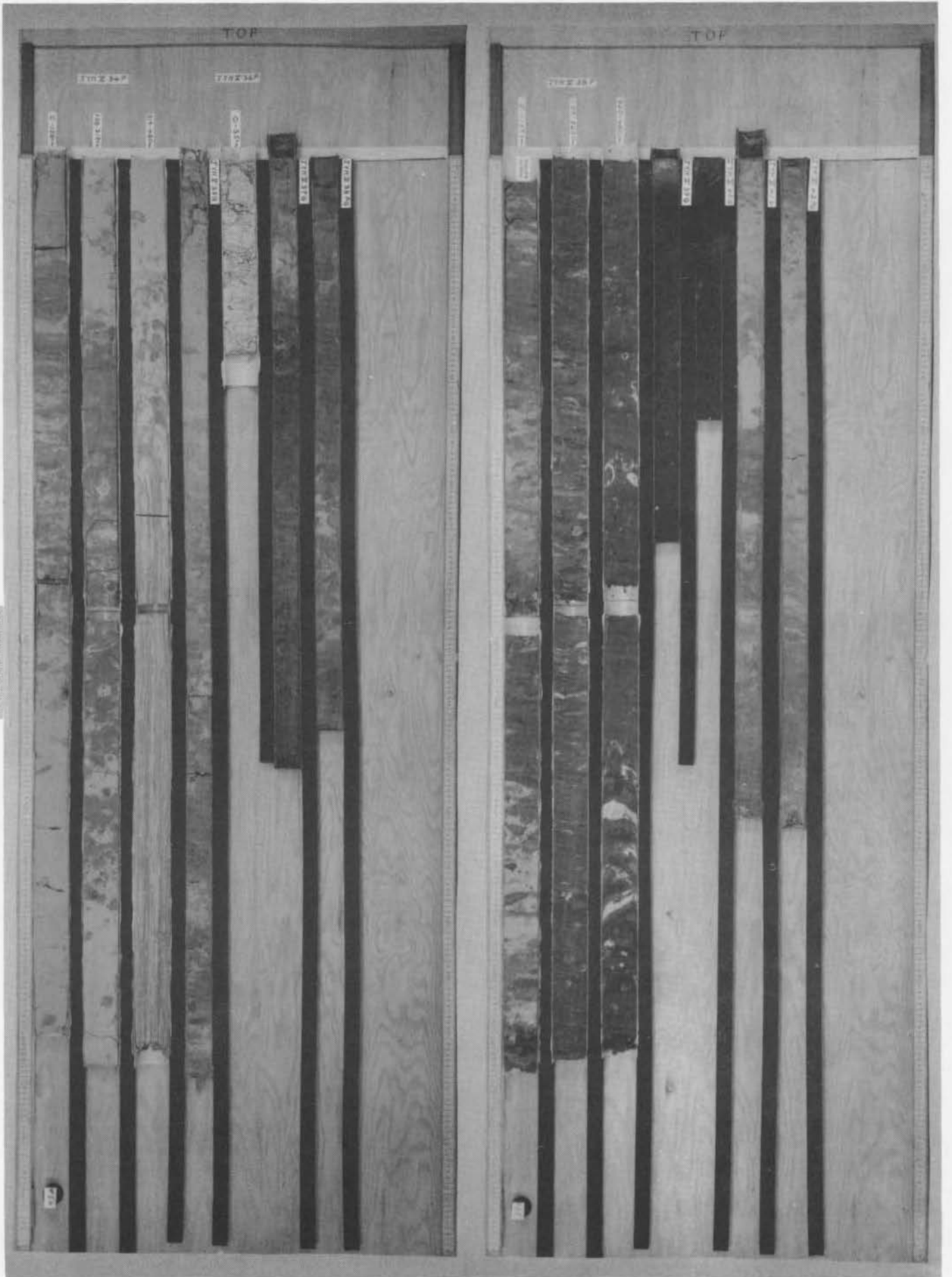
1965-1966

1967-1968

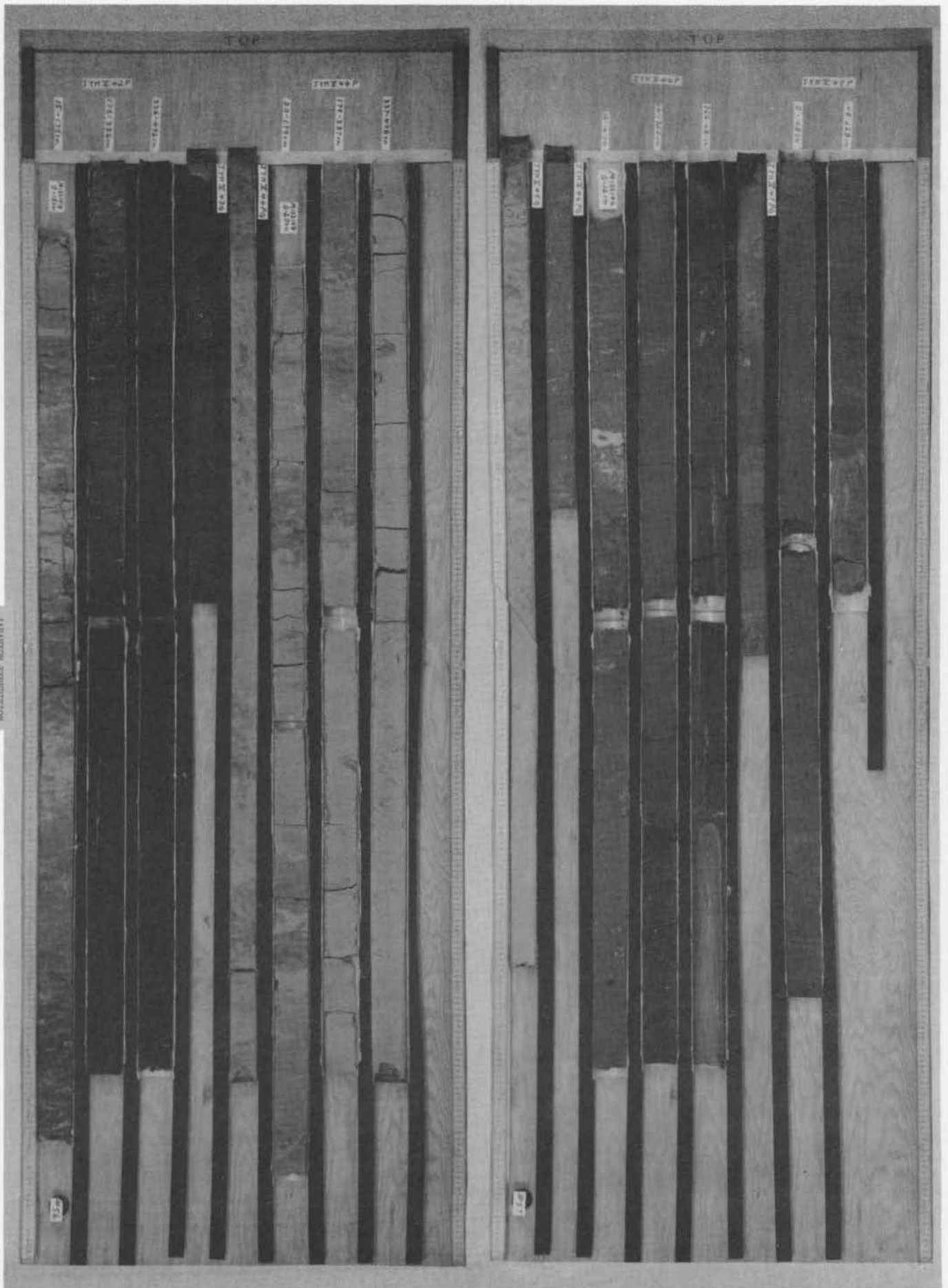
1965-1966

171

1968 2486/water
(cont'd)
MICHIGAN DEPARTMENT OF
JANUARY/SEPTEMBER 1963



JAPANESE EXPEDITION
(Leg 2)
June/Sept 1962



1965 tube/sunp
(A. 387)
BOLLINGSGOE BOJANTV?

