

Expedition

Summer School "Climate and Ocean" on RV Polarstern

25 scholars from 20 countries are exploring the Atlantic from north to south

[10. November 2016] On Saturday, November 12th, the research vessel Polarstern will set off for a one-month expedition towards Cape Town from Bremerhaven. On board there are 25 outstanding young scientists from the marine research, who together with twelve teachers explore the interactions between the ocean and the atmosphere.

On the journey across the Atlantic Ocean from north to south, the young scientists are to investigate how the physical conditions for life in the sea - such as temperature, carbon dioxide content or turbidity of the water - differ in the different climatic zones. They get to know the biological communities and work together in several projects with experts for physical processes and models, atmospheric measurements, remote sensing as well as physical, chemical and biological oceanography.



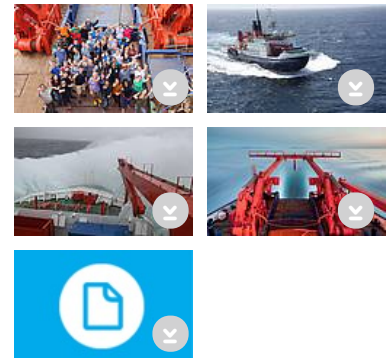
"We are running this program for the second time after the launch in 2015. This year, our international team of teachers is not just made up of natural scientists. For example, we have Lionel Playford on board, a representative of the visual arts", says Prof. Dr. Karen Wiltshire, biologist and deputy director of the Alfred Wegener Institute, Helmholtz Centre for Polar and Marine Research (AWI), and chief scientist of the expedition. The artistic exploration of natural sciences is intended to encourage the participants to observe nature and the sciences from a different angle, and to critically question themselves and their work.

The lawyer Prof. Dr. Sabine Schlacke, a member of the German Advisory Council on Global Change (WBGU) and Director of the Institute for Environmental and Planning Law at the University of Münster, is in charge of one of a total of five projects, which will involve all of the young scientists. The program is rounded off by co-operation with pupils on Heligoland and in Ireland. They have prepared questions concerning the expedition and the marine research, which are to be answered from the ship.

The Summer School is a cooperation of the Alfred Wegener Institute with the Japanese [Nippon Foundation](#), the [Partnership for Observation of the Global Oceans \(POGO\)](#), the [Strategic Marine Alliance for Research and Training \(SMART\)](#) and the [Helmholtz Alliance REKLIM](#). A total of 212 young scientists applied for a place on the training course. The participants come from Ireland, Nigeria, the Philippines, Germany, Mexico, Portugal, South Africa, Ethiopia, Russia, Austria, Brazil, Kenya, Egypt, Bangladesh, Argentina and the UK and work partly abroad, so that China, France, Belgium or Norway have become their second home.

After a short port stay in Cape Town, the Polarstern starts on its Antarctic season. Oceanographic long-term studies and the supply of the Neumayer Station III are the focus of an expedition from mid-December to early February. After starting from Punta Arenas, Chile, geoscientists are to investigate the glaciation history of the Amundsen Sea. In the middle of March Polarstern will sail back across the Atlantic to Bremerhaven, where the ship is to return on 20th April 2017. Within the framework of the [Scientific Year 2016*17 Seas and Oceans](#), the public is then given the opportunity to visit the Polarstern: The Alfred Wegener Institute is organizing an open ship on 22nd and 23rd April 2017.




Downloads






Contact

Science

 Karen Helen Wiltshire
 +49(4651)956-4112
 Karen.Wiltshire@awi.de

 Lisa Spotowitz
 +49(4725)819-3357
 lisa.spotowitz@awi.de

Press Office

 Folke Mehrtens
 +49(471)4831-2007
 Folke.Mehrtens@awi.de

Abo/Share

 [Subscribe to AWI press release RSS feed](#)



The Institute

The Alfred Wegener Institute pursues research in the polar regions and the oceans of mid and high latitudes. As one of the 18 centres of the Helmholtz Association it coordinates polar research in Germany and provides ships like the research icebreaker Polarstern and stations for the international scientific community.

More information

Topic pages

» [Research Vessel and Icebreaker Polarstern](#)

Related pages

» [Weekly Reports Polarstern](#)