

SHMIP The subglacial hydrology model intercomparison Project

BASILE DE FLEURIAN,¹ MAURO A. WERDER,² SEBASTIAN BEYER,^{3,4}
DOUGLAS J. BRINKERHOFF,⁵ IAN DELANEY,² CHRISTINE F. DOW,⁶
JACOB DOWNS,⁷ OLIVIER GAGLIARDINI,⁸ MATTHEW J. HOFFMAN,⁹
ROGER LeB HOOKE,¹⁰ JULIEN SEGUINOT,^{2,11} ALEAH N. SOMMERS¹²

¹Department of Earth Science, University of Bergen and Bjerknes Centre for Climate Research, Bergen, Norway

²VAW, ETH Zurich, Zurich, Switzerland

³Potsdam Institute for Climate Impact Research, Potsdam, Germany

⁴Alfred Wegener Institute, Helmholtz Centre for Polar and Marine Research, Bremerhaven, Germany

⁵Geophysical Institute, University of Alaska Fairbanks, Fairbanks, AK, USA

⁶Geography and Environmental Management, University of Waterloo, Waterloo, Canada

⁷Department of Mathematics, University of Montana, Missoula, MT, USA

⁸Univ. Grenoble Alpes, CNRS, IRD, IGE, F-38000 Grenoble, France

⁹Fluid Dynamics and Solid Mechanics Group, Los Alamos National Laboratory, Los Alamos, NM, USA

¹⁰School of Earth and Climate Sciences and Climate Change Institute, University of Maine, Orono, ME, USA

¹¹Arctic Research Center, Hokkaido University, Sapporo, Japan

¹²Civil, Environmental and Architectural Engineering, University of Colorado, Boulder, CO, USA

Correspondence: Basile de Fleurian <basile.defleurian@uib.no>; Mauro A. Werder <werder@vaw.baug.ethz.ch>

ABSTRACT. Subglacial hydrology plays a key role in many glaciological processes, including ice dynamics via the modulation of basal sliding. Owing to the lack of an overarching theory, however, a variety of model approximations exist to represent the subglacial drainage system. The Subglacial Hydrology Model Intercomparison Project (SHMIP) provides a set of synthetic experiments to compare existing and future models. We present the results from 13 participating models with a focus on effective pressure and discharge. For many applications (e.g. steady states and annual variations, low input scenarios) a simple model, such as an inefficient-system-only model, a flowline or lumped model, or a porous-layer model provides results comparable to those of more complex models. However, when studying short term (e.g. diurnal) variations of the water pressure, the use of a two-dimensional model incorporating physical representations of both efficient and inefficient drainage systems yields results that are significantly different from those of simpler models and should be preferentially applied. The results also emphasise the role of water storage in the response of water pressure to transient recharge. Finally, we find that the localisation of moulins has a limited impact except in regions of sparse moulin density.

KEYWORDS: glacier hydrology, glacier modelling, glaciological model experiments, ice-sheet modelling, subglacial processes

1. INTRODUCTION

Subglacial water flow has long been the subject of glaciological studies (see Clarke, 1987, for a historical overview). Early quantitative treatments of subglacial drainage were motivated by a diverse range of problems: Weertman (1962) considered how a water layer at the glacier base impacts sliding, Röthlisberger (1972) developed his theory of channelised flow (through R channels) in connection with hydro-power generation related work, and Nye (1976) extended R channel theory with time-dependence to investigate glacial lake outburst floods. Recent developments in subglacial drainage theory have been driven largely by the motivation to better understand, represent and model glacier sliding, outburst floods and subglacial sediment dynamics in models.

It is indeed this link to ice dynamics that spurred the most recent, ongoing burst of subglacial drainage model development. As of yet, we do not fully understand the impact on ice

dynamics of increased surface melt in a warming climate (e.g. Vaughan and others, 2013). For glaciers and land-terminating portions of the ice sheets, an acceleration in ice flow may lead to increasingly negative mass balance by moving ice to lower, warmer, elevations (Ridley and others, 2010). In temperate glaciers, a large fraction of mean ice velocity is due to slip of the glacier over its bed (e.g. Engelhardt and Kamb, 1998; Cuffey and Paterson, 2010; Morlighem and others, 2013). This basal slip is a combination of both sliding of the glacier ice over its bed and deformation of any water saturated till layer underlying the ice (Cuffey and Paterson, 2010). Both components of slip are primarily driven by the presence of water at the base of the glacier, in particular, by its pressure (e.g. Iken and Bindschadler, 1986; Iken and others, 1993; van de Wal and others, 2008). Therefore, to assess the impact of increased surface melt on ice dynamics, we need to determine the response of the subglacial system to enhanced water input; current theories and models

suggest that water pressure and hence ice flow speed, could either increase or decrease, depending on the nature of the subglacial drainage (e.g. Shannon and others, 2013; Sole and others, 2013; Doyle and others, 2014; Tedstone and others, 2015; Joughin and others, 2018).

The scarcity of data and the complexity of the subglacial system makes it difficult to pinpoint the water-induced processes acting at the base of glaciers. Thus, numerous theoretical models have been developed since the 1960s to mimic the flow of water at the beds of the glaciers (e.g. Weertman, 1962; Röthlisberger, 1972; Nye, 1973; Walder, 1986; Kamb, 1987; Creyts and Schoof, 2009). These theoretical models have been motivated by specific needs, preferences and practical considerations, leading to a plethora of models. The different approaches used make it difficult to compare the diverse theories that they implement. For example, over the last couple of decades, a number of subglacial hydrology models have been developed that compute basal water pressure directly from meltwater input (e.g. Flowers and others, 2004; Werder and others, 2013; de Fleurian and others, 2014) and a comprehensive overview is given in Flowers (2015).

This intercomparison project sets out to alleviate the problem of multiple theoretical approaches to subglacial hydrology by establishing a set of synthetic simulation suites and comparing the results of the participating models running those simulations. This should help potential model users make a more informed decision as to which model to choose for a specific application. Likewise, for model developers, this may assist in assessing where further model developments are needed and provide a set of reference models against which to compare future ones.

The aim of this intercomparison is different from that of ice-sheet model intercomparison projects (Huybrechts and others, 1996; Payne and others, 2000; Pattyn and others, 2008, 2012, 2013). In the latter case, the physics of ice flow are reasonably well established, although boundary conditions remain less clear and are usually specified as parts of the setup.

For subglacial hydrology, however, a complete and ‘true’ theory is lacking. In other cases, such as the ice-thickness estimation intercomparison ITMIX (Farinotti and others, 2017), a set of measurements is available which allows the assessment of the most appropriate model to apply. Unfortunately, observations of subglacial drainage are sparse, difficult to interpret (e.g. borehole measurements Rada and Schoof, 2018) and unlikely to fully constrain all the parameters of a subglacial drainage model (e.g. Brinkerhoff and others, 2016). Furthermore, to date, applications of subglacial drainage models to real topographies and forcings are few and often hampered by modelling difficulties. Recognising these limitations and following the line of preceding intercomparison exercises, we opted for synthetic test cases which were better able to detect differences in physical or numerical approaches through qualitative comparisons.

Note that this intercomparison does not attempt to verify or validate the results provided by the participating models. Instead, SHMIP aims to provide a set of benchmark experiments tailored to compare existing and future subglacial hydrologic model in spite of their varied implementations. This intercomparison will also indicate which models will likely be appropriate for certain applications in subglacial hydrology. All results of this SHMIP exercise are openly accessible at de Fleurian and others (2018).

We first give a brief overview of subglacial drainage modelling and describe the physics implemented by the participating models. We then describe the approach taken by SHMIP and the different suites of experiments, before presenting results from the 13 models. Finally, we provide a synthesis of model results, and discuss strengths and potential shortcomings based on these results.

2. THE WIDE VARIETY OF SUBGLACIAL HYDROLOGY MODELS

By design, this intercomparison exercise allowed participation of any model that calculates effective pressure (defined as ice overburden pressure minus subglacial water pressure). The project thus attracted a wide range of models: from a zero-dimensional (0-D) lumped element model to models simulating the entire two-dimensional (2-D) glacier bed. Models ranged from ones developed in the 1980s to others under current development and from models simulating one component of the system, for instance R channels, to models coupling several components. Table 1 gives an overview of the participating models.

The components of the drainage system are commonly classified into two types: inefficient (slow) drainage and efficient (fast) drainage, with the former usually represented as a distributed system and the latter as a channelised system (e.g. Flowers, 2015). This difference is a consequence of how the steady state of each system transforms under increasing discharge: in an inefficient system pressure increases, because steeper pressure gradients are required to conduct the increased discharge; conversely, in an efficient system pressure decreases, as the system’s capacity increases sufficiently to allow operation at lower gradients.

In many of the participating models, the inefficient component of the drainage system is based, at least partially, on a linked cavity drainage system using, either discrete elements (Kessler and Anderson, 2004) or a 2-D sheet (Hewitt, 2011). The efficient component, if it is included, is usually represented by Röthlisberger channels (R channels) following Röthlisberger (1972). The *cdf* model uses a different type of water sheet (or inefficient system) based on Flowers and others (2004). Two models (*bf* and *sb*) pursue a different strategy modelling the drainage as a porous aquifer in order to approximate discharge through both the inefficient and efficient system. In the following section, the different types of drainage systems are briefly described. For a more in-depth comparison of subglacial drainage models, refer to the excellent review paper by Flowers (2015).

2.1. Subglacial hydrology modelling

Common to all participating models is the use of a conservation of water equation, which takes the form:

$$\frac{\partial h}{\partial t} + \nabla \cdot \mathbf{q} = m, \quad (1)$$

where h is the local size of the water body (height, area or volume, depending on the formulation), \mathbf{q} is the water flux and m is a source term (accounting for meltwater input from the surface via the englacial system as well as water produced by geothermal flux, by frictional heat from sliding and by heat produced by dissipation in the subglacial flow). The second common ingredient is the use of a ‘water flow law’

Table 1. Summary of the participating models

Label	Experimenter and Citation	Suites	Dim.	Model type	Parameters different from Table 3	PDMP
<i>db</i>	D. Brinkerhoff; Brinkerhoff and others (2016)	A,D–F	0D	conduit	$e_v = 10^{-3}$ (A,D) $e_v = 10^{-2}$ (E–F)	No
<i>id</i>	I. Delaney; from: Kessler and Anderson (2004)	A–C,E, F	1D	conduit	$c_t = 0$	No
<i>rh</i>	R. LeBhooke; from: Röthlisberger (1972)	A,E	1D	one-channel (steady state only)	None	No
<i>cdf</i>	C. Dow; Pimentel and Flowers (2010)	A	1D	macroporous-sheet/ one-channel	see supplementary <i>N</i> tuned on A5	Yes
<i>jd</i>	J. Downs; from: Hewitt (2011)	A–E	2D	cavity-sheet	$k_s = 10^{-2}$ (A6,B,C)	No
<i>jsb</i>	J. Seguinot; Bueler and van Pelt (2015)	A–F	2D	cavity-sheet	$e_v = 10^{-3}$ (A–D) $e_v = 10^{-2}$ (E–F)	No
<i>as</i>	A. Sommers; Sommers and others (2018)	A–C,E, F	2D	cavity-sheet (with melt opening)	see supplementary <i>N</i> tuned on A3	Yes
<i>sb</i>	S. Beyer; Beyer and others (2017)	A–D	2D	(one) porous-layer	see supplementary <i>N</i> tuned on A3 and A5	No
<i>bf</i>	B. de Fleurian; de Fleurian and others (2016)	A–F	2D	(dual) porous-layer	see supplementary <i>N</i> tuned on A3 and A5	No
<i>mh₁</i>	M.J. Hoffman; Hoffman and Price (2014)	A,D	2D	cavity-sheet/one-channel	None	No
<i>mh₂</i>	M.J. Hoffman; Hoffman and others (2018b)	A–D	2D	cavity-sheet/channels	$e_v = 10^{-3}$ (A–D)	Yes
<i>og</i>	O. Gagliardini; Gagliardini and Werder (2018)	A–F	2D	cavity-sheet/channels	None	Yes
<i>og'</i>	O. Gagliardini; Gagliardini and Werder (2018)	E,F	2D	cavity-sheet/channels	$c_t = 0$	No
<i>mw</i>	M.A. Werder; Werder and others (2013)	A–F	2D	cavity-sheet/channels	None base-case	Yes
<i>mw'</i>	M.A. Werder; Werder and others (2013)	C,D	2D	cavity-sheet/channels	$e_v = 10^{-4}$	Yes

The model label is defined as the two initials of the experimenter; if the used model was published/written by someone else, then one initial of the original author is appended (e.g. *cdf*); models implemented by the experimenter from a published model are cited as ‘from: original publication’; two different models of the same experimenter are distinguished by a subscript number; two submissions of the same model using different parameters are distinguished by a prime. ‘Suites’ lists the Suites for which model results were submitted. ‘Dim.’ gives the number of spatial dimensions of the model, which is used in the text to differentiate between them, that is 0-D, 1-D or 2-D models. ‘Model Type’ is a brief description of the type of model, which is used throughout the text; these are defined within the section ‘Subglacial hydrology modelling’. ‘Parameters different from Table 3’ shows which parameters have been changed from the base-case Run, please refer to the supplementary for parameters of the models requiring tuning. ‘PDMP’ states if the model introduces a pressure dependence to the melting point.

relating \mathbf{q} with hydraulic potential gradient $\nabla\phi$ using a linear (Darcy flow) or nonlinear relation (Darcy–Weisbach or Manning)

$$\mathbf{q} \propto \nabla\phi \quad \text{or} \quad \mathbf{q} \propto \sqrt{\nabla\phi}, \quad (2)$$

where the hydraulic potential $\phi = p_w + \rho_w g z$ is the sum of water pressure p_w and elevation potential (with water density ρ_w , acceleration due to gravity g and elevation z). The factor of proportionality may depend on other state variables, in particular, h . Both these equations can be applied in 2-D (a sheet), in 1-D (a channel or width integrated water sheet), or in 0-D (integrated over the whole domain).

However, these are only two equations for three unknowns \mathbf{q} , ϕ and h , so a third equation is needed to close the mathematical description of the subglacial drainage system. Typically, this equation describes the size of the drainage space. The different participating models implement this third equation in various ways, discussed in the following subsections. Furthermore, some models couple two drainage types together.

2.2. Sheet drainage

Over the years several formulations of water draining through a distributed system, often called a sheet drainage system, have been proposed (e.g. Weertman, 1962; Walder, 1986; Kamb, 1987; Creyts and Schoof, 2009). The participating models use two types of sheet-like drainage. The first, proposed by Flowers and Clarke (2002), is an empirical relation

between water sheet thickness h and water pressure p_w based on data from Trapridge Glacier (Canada)

$$p_w = p_i \left(\frac{h}{h_c} \right)^{7/2}, \quad (3)$$

where p_i is ice overburden pressure and h_c is a critical sheet thickness. A model implementing this type of sheet drainage system will be referred to as a *macroporous-sheet model* (Table 1).

The second formulation used by some of the participating models is based on a linked cavity drainage system (Walder, 1986; Kamb, 1987). In a 1-D setting, this formulation was advanced by Kessler and Anderson (2004) and Schoof (2010). Hewitt (2011) then generalised it to 2-D by using a cavity height averaged over a suitably large patch of the glacier bed. The formula takes the form of a rate equation for h (cavity cross-sectional area in 0-D and 1-D or average sheet height in 1-D and 2-D) that, when saturation is assumed, reads:

$$\frac{\partial h}{\partial t} = v_o - v_c, \quad (4)$$

where v_o is an opening rate, typically dependent on the sliding rate and bed roughness, and v_c is a closure rate due to ice creep. One possible form is

$$v_o = h_r u_b \quad \text{and} \quad v_c = \frac{2A}{n^n} h N^n, \quad (5)$$

where h_r is the bed roughness height, u_b is the ice sliding speed, A is the ice rate factor, n is Glen's exponent and $N = p_i - p_w$ is the effective pressure. A model implementing this type of sheet drainage system will be referred to as a *cavity-sheet model* (Table 1).

Note that in most models the opening term, v_o , does not contain the energy dissipation term (c.f. next section) which was in the original description (Walder, 1986; Kamb, 1987), as its implementation is not trivial (Dow and others, 2018) and it can lead to mathematical issues such as runaway growth of drainage space (Schoof and others, 2012). As an exception, model as does include opening by melt from dissipation, in conjunction with a different approach to the momentum equation (2) (Somers and others, 2018). For a more detailed overview of sheet-like drainage consult the excellent overview given in Bueler and van Pelt (2015).

2.3. Channelised drainage

The classic theory of channelised subglacial drainage, through R channels, was developed by Röthlisberger (1972) and Shreve (1972). Further work extended the theory to include time dependence and also water temperature as a free variable (Nye, 1976; Spring and Hutter, 1982) and to enable the use of broad low conduits, rather than semi-circular ones (Hooke and others, 1990). Whereas other theories of channelised drainage exist, such as canals (Walder and Fowler, 1994) (although these can also be considered as a type of distributed system), all of the participating models implementing channelised drainage use R channels. Furthermore, none of the participating models include water temperature as a state variable and instead assume that water temperature is always either at the pressure melting point or at 0°C. The equation describing the channel cross-sectional area S is similar to the cavity-sheet equation

$$\frac{\partial S}{\partial t} = V_o - V_c. \quad (6)$$

The closure V_c is again by ice creep and is identical to Eqn (5) (replacing h by S). Conversely, channel opening is due to ice melt at the channel walls

$$V_o = \frac{-Q\phi' + c_t c_w \rho_w Q\phi'_w}{\rho_i L}, \quad (7)$$

where the prime' is short for the spatial derivative $\frac{\partial}{\partial s}$ along the channel, c_t is the Clapeyron slope, c_w the heat capacity of water, ρ_i the density of ice and L the latent heat of fusion. The first term in the numerator is the energy dissipation in the flow (i.e. mechanical energy converted to thermal energy by the flow). The second term takes into account the changes in sensible heat due to pressure melting point variations, with the Röthlisberger constant $c_t c_w \rho_w \approx 0.3$. This second term can be neglected if the water is assumed to be always at 0°C. A model implementing this type of R channel drainage will be referred to as a *one-channel model*, if it involves only one channel, or a *channels model*, if it involves a network of channels (Table 1).

The equations of a single cavity Eqn (4) and an R channel Eqn (6) can be combined into one

$$\frac{\partial S}{\partial t} = v_o + V_o - V_c \quad (8)$$

(Kessler and Anderson, 2004), sometimes termed a conduit (Schoof, 2010), thus giving a drainage element that opens both by sliding and by melting. When opening by sliding dominates, the system behaves like a cavity; otherwise it is like an R channel. A model implementing this type of drainage system will be referred to as a *conduit model* (Table 1).

Equations (1), (2) and (6) describe a single R channel. However, the subglacial system is thought to consist of a network of these channels. Relatively recent advances (Schoof, 2010; Hewitt, 2013; Werder and others, 2013) have made the simulation of such a network of R channels possible.

2.4. Porous layer drainage

The approach to modelling a network of R channels described above has several drawbacks, such as having to resolve each channel with the mesh and having no obvious continuum limit. This, among other things, inspired the development of porous layer drainage models. Such models do not try to simulate the drainage system as described by the theory presented above but instead use one or several porous layers as being equivalent to different types of subglacial drainage. Porous layers are usually considered an inefficient drainage system (Shoemaker, 1986), but with proper parameter choice these layers can be configured to be as transmissive as highly efficient systems (Teutsch and Sauter, 1991). These models also rely on mass-conservation Eqn (1) and Darcy flow Eqn (2). To close the model, either a fixed layer thickness h is assumed, or the layer evolves as a function of the pressure.

Two main approaches are used to simulate systems with different efficiencies within this porous layer framework. In the first, several layers with different conductivities are used. In the second, a single layer is used and the conductivity (the constant of proportionality in Eqn (2)) is allowed to evolve. The porous layer models included here assume a non-zero compressibility (β_l), which adds a significant amount of storage S_s :

$$S_s = \rho_w g \omega h \beta_l \quad (9)$$

where ω is the porosity of the layer. A model implementing this type of drainage system will be referred to as a *porous-layer model* (Table 1).

2.5. Additional drainage elements

Additional drainage elements, such as drainage through till (e.g. Flowers and Clarke, 2002) are incorporated in some subglacial drainage models. In the participating models, the only additional process included is the variation of water storage as a function of water pressure. The storage in the englacial system is considered to be well connected to the subglacial system (i.e. the englacial water table height corresponds to the subglacial water head). This necessitates a modification of the conservation equation (1)

$$\frac{\partial h}{\partial t} + \frac{\partial h_e}{\partial t} + \nabla \cdot \mathbf{q} = m, \quad (10)$$

to include the thickness of the effective storage component h_e , which is given in terms of the water pressure $h_e = e_v \rho_w / \rho_w g$ in which e_v is the englacial void fraction.

2.6. Coupling of components

Subglacial drainage is thought to occur through different types of drainage systems, co-evolving in space and time and exchanging water (e.g. Iken and Truffer, 1997). To approximate this complex behaviour, many models couple multiple system components together. One example is the conduit mentioned above Eqn (8), combining an R channel and a cavity. Table 1 gives an overview over the coupled systems of each model. Additional details on each model are given in the supplementary materials. A model implementing several types of drainage systems will be referred to as the combination of systems it implements for example *cavity-sheet/channels model* and *macroporous-sheet/one-channel model* (Table 1).

3. INTERCOMPARISON DESIGN AND SETUP

The present intercomparison project deviates from many previous ones involving other components of the ice dynamic system, as there is no established theory of subglacial drainage, nor are there any sufficiently dense datasets that would allow reasonably conclusive comparisons with reality. This scenario prevents both validation and verification of the models participating in the intercomparison (Oreskes and others, 1994). With these limitations in mind, we designed the intercomparison around six synthetic Suites of experiments (labelled from A to F) each consisting of a set of four to six numerical experiments, subsequently referred to as *Runs*. The setup and detailed instructions are available online¹ and the website contents are included in the supplementary material. The Suites are designed to allow a wide variety of models to take part in the intercomparison and to test a large range of scenarios. This design allowed the participation of 13 models that completed some or all of the experiments. The main requirement was that models should output the effective pressure, which is used as the main diagnostic variable throughout the intercomparison. This approach excludes models based on a routing-approach (e.g. Le Brocq and others, 2009) and the till-layer based models (e.g. Bougamont and others, 2014). These alternative models do not explicitly compute effective pressures but instead use a pressure field unrelated to the state of the drainage system.

3.1. Topographies

The intercomparison uses two different synthetic glacier topographies (Fig. 1). The first (Fig. 1a), used for Suites A to D is a synthetic representation of a land-terminating ice sheet margin as seen, for instance, in Werder and others (2013). The ice-sheet domain is 100 km long (in the x direction) and 20 km wide (in the y direction), with a flat bed, parabolic ice surface and a maximum ice thickness of 1500 m:

$$\begin{aligned} z_s(x, y) &= 6(\sqrt{x+5000} - \sqrt{5000}) + 1, \\ z_b(x, y) &= 0, \end{aligned} \quad (11)$$

where z_s and z_b are the surface and bed elevation in metres, and x and y are the horizontal spatial coordinates in metres. To avoid numerical issues, the minimum ice thickness is 1 m.

The second topography (Fig. 1b), used for the Suites E and F, is a synthetic valley-glacier geometry inspired by

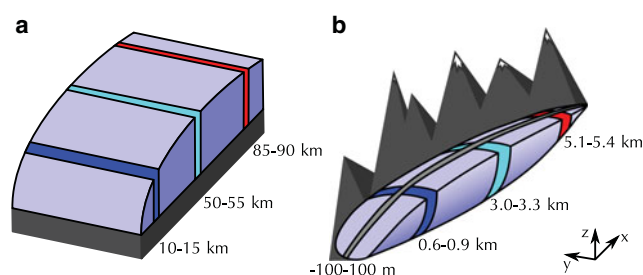


Fig. 1. Sketches of the topographies used, (a) 100 km long synthetic ice-sheet margin with a maximum thickness of 1500 m, and (b) 6 km long synthetic valley glacier with a 600 m altitude difference between summit and terminus. The coloured and gray bands are the regions used in presentation of the results.

Bench Glacier, AK, USA (e.g. Fudge and others, 2008). The glacier is 6 km long and 1 km wide, with a difference in altitude between the terminus and the head of 600 m. Its shape is given by the following two equations:

$$\begin{aligned} z_s(x, y) &= 100\sqrt[4]{x} + 200 + \frac{x}{60} - \sqrt[4]{2 \times 10^{10}} + 1, \\ z_b(x, y, \gamma) &= f(x, \gamma) + g(y)h(x, \gamma), \end{aligned} \quad (12)$$

in which γ is a parameter controlling the bed overdeepening, and f , g and h are helper functions defined as follows:

$$\begin{aligned} f(x, \gamma) &= \frac{z_s(6000, 0) - 6000\gamma}{6000^2}x^2 + \gamma x, \\ g(y) &= 0.5 \times 10^{-6} |y|^3, \\ h(x, \gamma) &= \frac{(-4.5x/6000 + 5)(z_s(x, 0) - f(x, \gamma))}{z_s(x, 0) - f(x, \gamma_b) + 10^{-16}}, \end{aligned} \quad (13)$$

where $\gamma_b = 0.05$ is the parameter that is used as a reference γ and which gives the closest matching bed elevation to that of Bench Glacier. By design, the glacier boundary is the same for all γ and its half-width is given by

$$y_o(x) = g^{-1} \left(\frac{z_b(x, 0) - f(x, \gamma_b)}{h(x, \gamma_b) + 10^{-16}} \right). \quad (14)$$

3.2. Boundary conditions

For the two geometries, the boundary conditions are prescribed to give a realistic distribution of water pressure. The most important boundary is the margin of the ice sheet ($x = 0$ km) or terminus of the glacier ($x = y = 0$ km) where the water pressure is required to be null. The flux at this boundary is then free to evolve. All the other boundaries are treated as zero-flux boundaries.

3.3. Parameters and optional tuning

The two topographies are complemented by a set of physical parameters (see Table 3), which are used in the cavity-sheet/channels drainage formulations Eqns (1)–(10). Experimenters using models that implement this cavity-sheet/channels formulation (or a very similar one) were instructed to use the provided parameters in their model Runs. Note that the englacial void fraction e_v is different for Suites A–D and Suites E–F.

However, a wider range of physics is incorporated in the participating subglacial hydrology models (and presumably

¹ <https://shmip.bitbucket.io/>

future models that may use this intercomparison as a test setup), and this requires additional and/or different parameters. This further hampers an intercomparison of models based on different physics. To circumvent this difficulty, models whose parameters are not captured in Table 3 are tuned to the width-averaged effective pressure output of two reference Runs of a model employing the cavity-sheet/channels formulation (GlaDS model, *mw*, tuning instructions²). Optionally, modellers could also tune using the provided width-averaged sheet and channel discharge. The chosen reference Runs are two steady-state Runs with low and high recharge (Runs 3 and 5 from Suite A, Fig. 2m) that correspond to a sheet-only state and to a channelised state of model *mw*, respectively. The models that used tuning are *cdf* (only A5), *jd* (only A5, for high discharge), *as* (only A3), *sb* and *bf* (a red label in Fig. 2 indicates a tuned model, with the white outline showing the tuned Runs). Most tuned models only used the provided effective pressure but model *as* which was also roughly tuned to discharge. Note that the tuning was optional and that lack of tuning would not preclude participation. However, no model with parameters diverging from that of the reference model were submitted without tuning. Nevertheless, the prescribed tuning is unlikely to constrain all parameters of a subglacial drainage model, for instance any parameters reflecting transient behaviour will not be constrained. However, we feel that this tuning strategy presents a balance between making the model outputs comparable without requiring models employing other physics to over-fit and thus pushing them into a regime that is not representative for them. Finally, results that are different from the reference Run do not mean that the corresponding model is less correct, but merely different.

3.4. Suite A: steady state

The six Runs of Suite A are based on the ice-sheet topography (Eqn (11) and Fig. 1a) with a steady and spatially uniform water input. The primary objective of Suite A (beside providing a base-case for tuning) is to produce results for a simple steady state in terms of effective pressure and discharge. The input increases by four orders of magnitude from a low value corresponding to basal melt production (Run A1, $m \approx 2.5 \text{ mm a}^{-1}$) to a high water input based on the peak water discharge driven by surface melt as observed in Greenland (Run A6, $m \approx 50 \text{ mm d}^{-1}$ (Smith and others, 2017), see Table 4).

3.5. Suite B: localised input

The importance of input localisation is investigated in Suite B. To test this, the spatially uniform input that was used in Run A5 is instead fed into an increasing number of moulins (i.e. point inputs). The number of moulins increases from one (B1) to 100 (B5) between which the discharge is equally partitioned (see Table 4). The location of the moulins is randomly generated for each Run and then used in all of the different models. Experimenters running 1-D models were instructed to collapse the moulins onto a single flowline. Additionally a distributed input, as in Run A1, is included to represent basal melt.

² <https://shmip.bitbucket.io/instructions.html#sec-1-2>

3.6. Suite C: diurnal cycle

The effect of short timescale dynamics, as represented by the diurnal melt cycle, on the response of the subglacial drainage system is targeted by Suite C. The starting point for the Runs of this Suite is the steady state achieved in Run B5 (steady input into 100 moulins). The different Runs are performed with diurnal melt cycles of increasing amplitude with recharge into each moulin given by

$$R(t, R_a) = \max\left(0, M_{in} \left[1 - R_a \sin\left(\frac{2\pi t}{s_d}\right)\right]\right), \quad (15)$$

where t is the time in seconds, s_d the number of seconds per day and $M_{in} = 0.9 \text{ m}^3 \text{ s}^{-1}$ the background moulin input from Run B5 (see Table 4). The models were to be run until a periodic state was reached. The relative amplitude of the forcing R_a ranges from 0.25 for Run C1 to 2 for Run C4 (see Table 4). For Run C4, the negative input values given by the high amplitude of the signal are cut off (see supporting Fig. S9) and this Run, therefore, has an overall higher water input than C1 to C3 (~20% of volume increase). As in B5, a uniform and constant background input equal to the recharge of A1 is applied.

3.7. Suite D: seasonal cycle

The long timescale (seasonal) evolution of the drainage system is investigated in Suite D. It uses initial conditions from Run A1, which represent the water input during winter. From this starting point, a seasonal cycle is applied to the water input and the model is run until a periodic annual state is achieved. The forcing is computed from a simple degree day model driven by a temperature parameterisation. The temperature at 0 m elevation is given by

$$T(t) = -16 \cos\left(\frac{2\pi t}{s_y}\right) - 5 + \Delta T. \quad (16)$$

The Runs of this Suite are achieved by increasing the mean annual temperature, the value of ΔT , from -4°C to 4°C (see Table 4).

The distributed recharge is then computed from the following degree day model formulation

$$R(z_s, t) = \max\left(0, DDF \left(T(t) + z_s \frac{dT}{dz}\right)\right), \quad (17)$$

where $((dT)/(dz)) = -0.0075 \text{ K m}^{-1}$ is the lapse rate and $DDF = 0.01/86400 \text{ m K}^{-1} \text{ s}^{-1}$ is the degree day factor (Table 2). As in Suites B and C, a uniform and constant basal melt input equal to that of A1 is applied in all Runs.

3.8. Suite E: overdeepening of valley topography

Suite E is designed to investigate the effect of bed slope on the models. The common base for this Suite is the synthetic valley topography (Eqn (12) and Fig. 1b). In the different Runs of this Suite the shape of the bed topography is altered to define a more or less pronounced overdeepening (Table 4 and Fig. 6k). The water input is constant and uniformly distributed at twice the rate of Run A6 ($m \approx 100 \text{ mm d}^{-1}$). Note that reference parameters for the valley Runs results in a non-zero storage (Table 3).

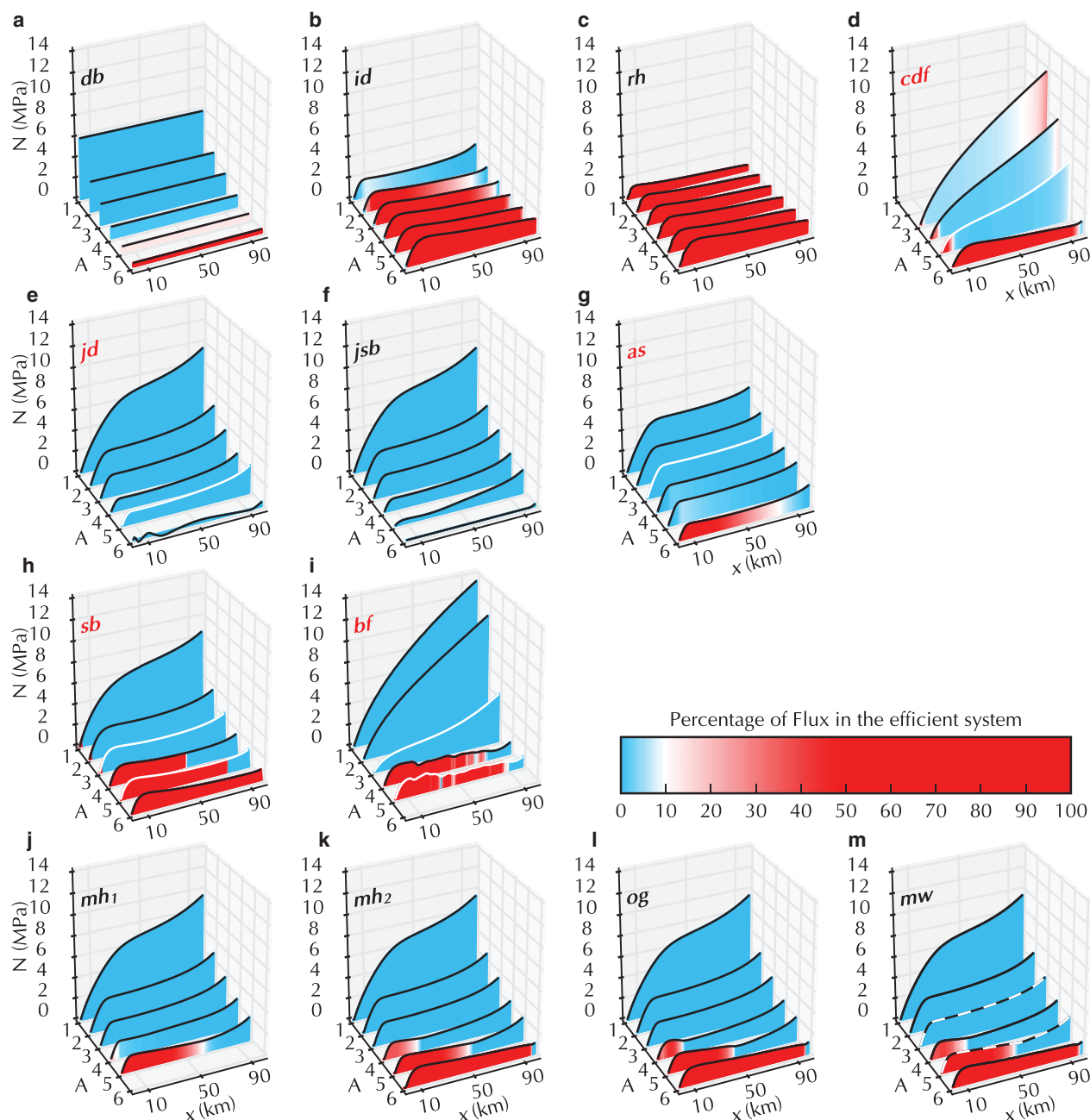


Fig. 2. Suite A results: mean value of the effective pressure (N) versus distance from the terminus (x) for all Runs (axis labelled A). Each submission is displayed in its own panel with the submission label printed. The results with the black and white dashed outline are the reference simulations used for tuning. Models that were tuned to any of the reference simulations have their submission name in red and the fitted Run(s) are highlighted with a white outline. The colours represent the level of channelisation of the drainage system. Here a shift from inefficient to efficient drainage system occurs when 10% of the total flux is drained by the efficient drainage system.

3.9. Suite F: seasonal cycle on valley topography

Suite F runs a seasonal water forcing – mirroring Suite D – for the synthetic valley glacier using the baseline value of the topography parameter $\gamma = \gamma_b$. First the models are run to a steady state with water input as in A1. This steady state is then used as an initial condition for all of the Runs. Following this, a seasonal forcing as specified with Eqn (16) and (17) is applied using temperature offsets between -6°C and 6°C (Table 4).

4. RESULTS

The objective of this study is to illuminate the differences between various subglacial hydrology formulations to

show how these differences affect model results. Our evaluation focuses on effective pressure as that is the principal coupling to ice dynamics, which, in turn, is a primary motivation behind subglacial drainage studies. All of the submitted results are open source and can be accessed at de Fleurian and others (2018) for further investigation. We condense the results into three types of figures: steady state with distributed recharge (Suites A and E, Figs. 2 and 6), steady state with moulin input (Suite B, Fig. 3) and transient simulations (Suites C, D and F, Figs. 4, 5 and 7). Figs. 3, 4, 5 and 7 present only one or two Runs in detail on which we focus the discussion. However, the figures for the other Runs are provided in the supplementary material as well as numerous additional figures for each Run and model.

Table 2. List of symbols and fixed parameters used in the definition of the Suites of experiments

Name	Value and units	Symbol
Bed elevation	m	Z_b
Surface elevation	m	Z_s
Glacier outline	m	Y_o
Time coordinate	s	t
Spatial coordinates	m	x, y
Lapse rate	-0.0075 K m^{-1}	dT/dz
Day	$24 \times 3600 \text{ s}$	s_d
Year	$365 \times s_d \text{ s}$	s_y
Degree day factor	$0.01/s_d \text{ mK}^{-1} \text{ s}^{-1}$	DDF

Table 3. Physical parameters appearing in the drainage model description with the values to be used, as applicable, for the simulations (Eqn (1)–(10), upper part)

Name	Value	Symbol
Water density	1000 kg m^{-3}	ρ_w
Glacier Density (ice+firn)	910 kg m^{-3}	ρ_i
Acceleration of gravity	9.8 m s^{-2}	g
Latent heat of fusion	334 kJ kg^{-1}	L
Specific heat capacity water	$4220 \text{ J kg}^{-1} \text{ K}^{-1}$	c_w
Clausius-Clapeyron constant	$7.5 \times 10^{-8} \text{ K Pa}^{-1}$	c_t
Glen's n	3	n
Ice flow constant	$3.375 \times 10^{-24} \text{ Pa}^{-3} \text{ s}^{-1}$	A
Ice sliding speed	$1 \times 10^{-6} \text{ ms}^{-1}$	u_b
Bedrock bumps height	0.1 m	h_r
Englacial void fraction	0 (A–D) or 10^{-3} (E,F)	e_v
Bedrock bump wavelength	2 m	l_r
Turbulent flow exponent α	5/4	α
Turbulent flow exponent β	3/2	β
Sheet 'conductivity'	$0.005 \text{ m}^{7/4} \text{ kg}^{-1/2}$	k_s
Sheet-width contributing to R channel melt	2 m	l_c
R channel 'conductivity'	$0.1 \text{ m}^{3/2} \text{ kg}^{-1/2}$	k_c

Additional reference parameters from GlaDS-model (lower part).

Where the ice flow constant is for a closure relation as described in Eqn (5). equivalent Darcy–Weisbach $f = 0.195$ for semi-circular channel.

Steady-state Suites A and E (Figs. 2 and 6) are evaluated using the percentage of flux in the efficient system and the width-averaged effective pressure (N). The full width is used in Suite A and a band of 200 m width, indicated by the gray band in Fig. 1b, is used in Suite E. The former is calculated, in most models, as the ratio of width-averaged channelised flux to total flux. This ratio is straightforward to compute for models that calculate the flux separately in the

two systems, but for models relying on a single system to model both efficient and inefficient drainage another quantity is used as a proxy: for sb , the flux is considered to pass through the efficient drainage system when the transmissivity is above $0.1 \text{ m}^2 \text{ s}^{-1}$; for as , db and id the ratio of melt opening rate to total opening rate is used; for jd , rh and jsb no proxy-quantity was calculated as they are single system models. In our analysis, we classify the drainage system as efficient if more than 10% of the discharge is through the efficient system; at this stage the effective pressure begins to be characteristic of an efficient system with increase in flux leading to increase in effective pressure.

We evaluate Suite B, also at steady state, by looking at the change between Runs B1 and B4, which use localised moulin input, as compared with Run A5, which uses the same total input but distributed uniformly (Fig. 3).

Suites C, D and F are transient models. Their width-averaged effective pressures are evaluated in three bands as displayed in Fig. 1 Their width-integrated discharge is evaluated in either the lowermost band (C) or all three bands (D,F) (Figs. 4, 5 and 7). Additionally, the phase lag is calculated between the recharge forcing and effective pressure signal, as well as the effective pressure amplitude.

4.1. Suite A: steady state

The effective pressure distribution and the type of system (inefficient in blue or efficient in red) is presented in Fig. 2. Moving upglacier from the terminus, all model Runs – except the lumped model db and those with an effective pressure close to zero on the whole domain – show a steep increase of effective pressure over the initial 10 km. This pressure distribution is driven by the ice-sheet geometry and the terminus boundary conditions. Farther upglacier, all of the model outputs follow the widely acknowledged rule that, in a steady state, a higher discharge leads to decreasing N if the system is inefficient and to increasing N if the system is efficient. This can be observed in Fig. 2 both as the discharge increases with proximity to the terminus, and as the specified recharge increases (from A1 to A6).

The different treatments of the subglacial drainage system lead to some variations in the results. The 0-D model db demonstrates channelisation in A5 but no corresponding increase in effective pressure either in A5 or the higher discharge A6. The channel and conduit models (rh and id , respectively) show a bias towards a more efficient drainage system, which is expected from their formulation. The effect of the single cavity of the conduit model id is clearly seen in A1 (and the upstream region in A2 and A3) where

Table 4. List of variable parameters for each Suite of experiment Runs. See the description of each Suite for more information on the parameters

Suite	Varying parameter	Run: 1	2	3	4	5	6
A	water input m (m s^{-1})	7.93×10^{-11}	1.59×10^{-9}	5.79×10^{-9}	2.5×10^{-8}	4.5×10^{-8}	5.79×10^{-7}
B	number of moulins	1	10	20	50	100	n/a
C	relative amplitude R_a	1/4	1/2	1	2	n/a	n/a
D	temperature offset ΔT ($^{\circ}\text{C}$)	–4	–2	0	2	4	n/a
E	bed parameter γ	0.05	0	–0.1	–0.5	–0.7	n/a
F	temperature offset ΔT ($^{\circ}\text{C}$)	–6	–3	0	3	6	n/a

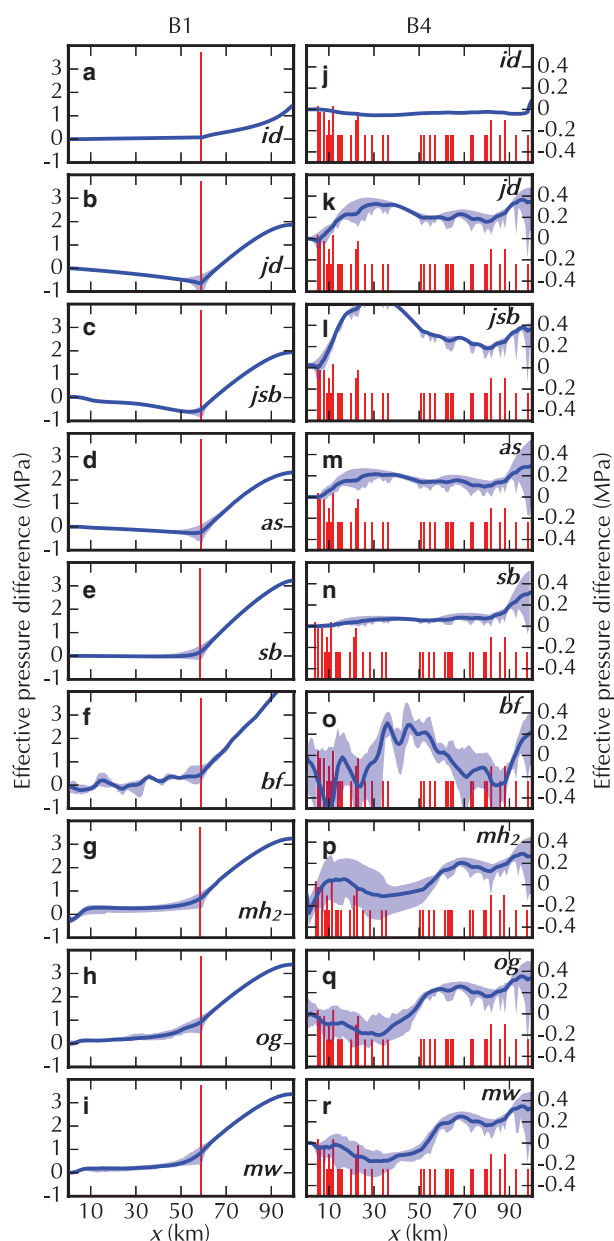


Fig. 3. Suite B results: the left column shows the difference in effective pressure between Run B1 and reference Run A5 (with same total recharge in both Runs). The right column shows the difference in effective pressure between Run B4 and A5. The differences are such that higher effective pressure in B yield positive values. The width-averaged difference is the solid blue line, and width-minimum and maximum difference are given by the light blue band. The red bars indicate moulin locations, their height scaled with the logarithm of input; the bars that are higher in Run B4 (right) are because multiple moulins are located at the same x -coordinate. Note that the scale of the effective pressure difference is different between the two columns.

the effective pressure increases with a decrease in discharge. The channel (rh) and conduit (id) models also produce higher N for Run A6 than the fully channelised cavity-sheet/channels models (mh_2 , og and mw), because all water is conducted through a single R channel, whereas the cavity-sheet/channels models have several parallel R channels (see supporting Figs. S145, S156, S177).

The cavity-sheet models (jd , jsb , as , mw , mh_1 , mh_2 and og) show a shallow effective pressure gradient between 10 and

~ 70 km before it increases again near the upglacier domain boundary. Of those models, the ones using a cavity-sheet drainage system exclusively (jd and jsb), have lower effective pressure in the higher discharge Runs (A4–A6) compared with the models that also incorporate an efficient system. For the cavity-sheet model jd , the tuning to A5 does not yield significant improvement in the results of Run A6 (where the tuned values are used). The cavity-sheet model as produces effective pressure values positioned between those of the cavity-sheet and of the cavity-sheet/(one-)channel models, due to the inclusion of opening by melt across the entire domain, allowing efficient drainage to develop.

The models using tuning (cdf , jd , as , sb and bf) obtain a reasonable fit to their target input scenarios with a better fit for the higher input scenarios (when targeted). Using the tuned parameters, cdf and bf show effective pressures largely above that of the reference simulation mw for Runs A1 and A2 (or in the case of cdf , A3, as A1 and A2 did not converge in the cdf model), and show no shallow gradient region in the middle of the domain. Results from sb and cdf closely follow those of mw for Run A6 while bf did not converge for this Run. The porous-layer models sb and bf predict more channelisation for A4 than the reference results of mw . The different approaches to the porous approximation are particularly clear in this Suite where the single layer model allowing variations in transmissivity (sb) closely follows the results of mw with slightly lower effective pressure. Compared with this, the fixed transmissivity of the inefficient layer in bf model yield unrealistically large effective pressure under low water input.

4.2. Suite B: steady state with moulin input

Suite B examines the impact of localised recharge on effective pressure distribution. This is achieved by recharging the system through an increasing number of moulins while keeping a constant overall input. We show results for Runs B1 and B4 (Fig. 3), in which recharge is through one and 50 moulins, respectively (other Runs in supporting Figs. S1–5). Fig. 3 shows the difference in effective pressure between Run B1 and A5 in the left column, and that between Run B4 and A5 in the right column.

The results show two clearly different behaviours. In Runs B3 to B5, with 20, 50 and 100 moulins, respectively, the impact of the localised input on effective pressure is relatively small as can be seen in the example of Run B4 shown in Fig. 3j–r. All models that provided results for this Run show a similar response with the amplitude of the difference between A5 and B4 ranging from almost nothing for id to ± 0.5 MPa. In contrast, the lower moulin count Runs B1 and B2 (one and 10, respectively), produce distinctive spatial variability in their outputs (see B1 in Fig. 3a–i). For those Runs, the largest difference from A5 is upstream of the highest moulin where the effective pressure increases, reaching values at least twice as large as that of A5 at the highest point of the domain. Downstream of the highest moulin, the pressure distributions are much closer to that of Run A5 with a maximum variation of $\sim 10\%$ of the ice overburden pressure. We attribute this pattern to the limited discharge, provided only by basal melt, upstream of the highest moulin. In general, in models with only an inefficient system, effective pressure is lower than in A5 below the uppermost moulin (negative values). The other models

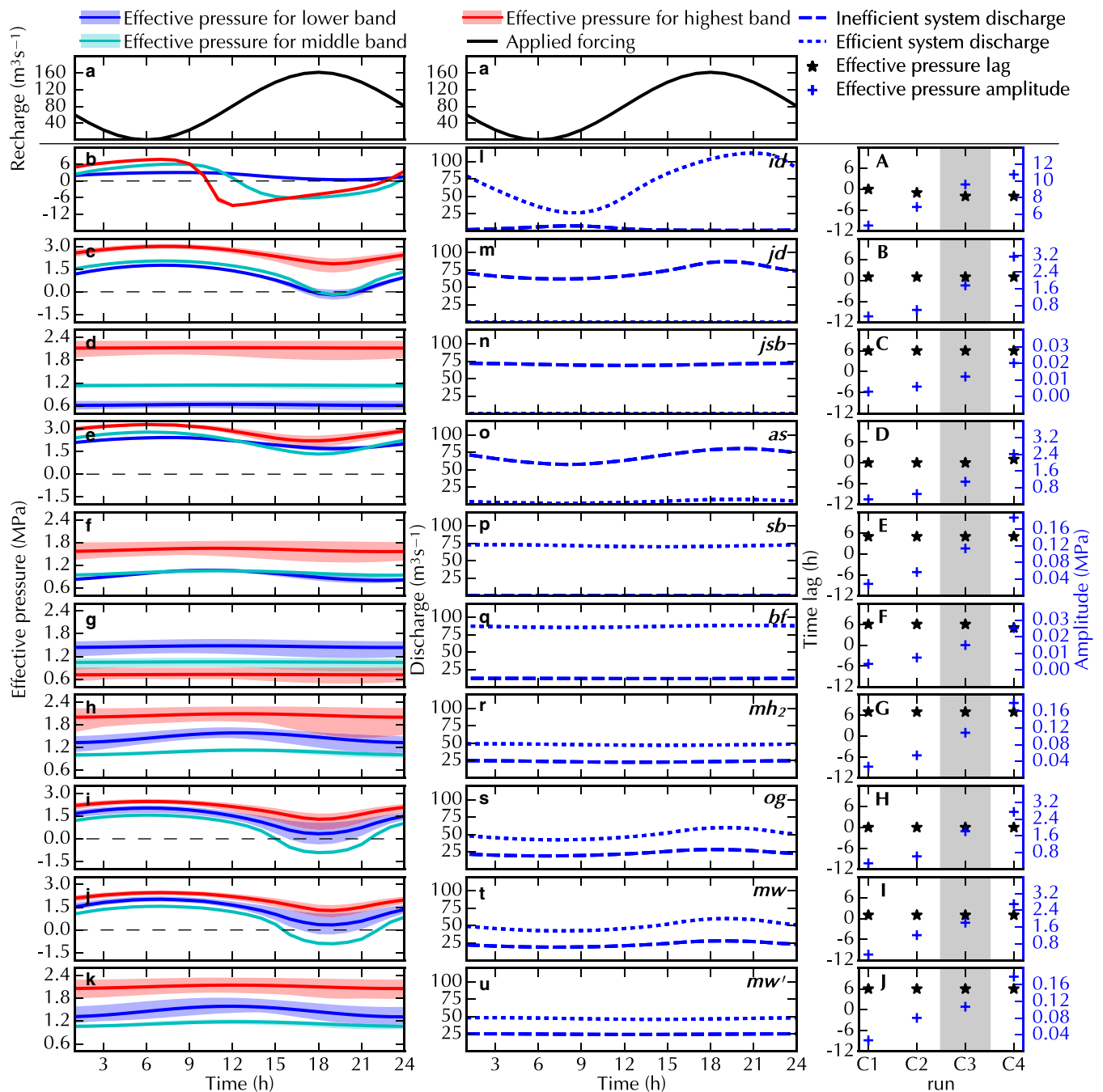


Fig. 4. Suite C results: left and centre columns show Run C3 with a panel for each submission, right column shows all Runs. The top row shows total recharge for the whole domain (a). Each row shows the results of one model (model label in the middle column). The left column (b to k) shows the evolution of the mean effective pressure in the three bands as defined in Fig. 1a. The coloured line shows the mean value and the shading represents the spread within the band. The dashed black line marks zero effective pressure. The middle column (l to u) shows the evolution of the discharge in the inefficient (dashed) and efficient (dotted) drainage system for the lower band. The right column (A to J) shows the time lag between maximum recharge and minimum effective pressure (black stars) and amplitude of the effective pressure variation (blue crosses) averaged over the entire domain for Runs C1 through C4. Note that the scale for amplitude of effective pressure variations varies between models. The greyed region in the right column identifies the Run plotted in the two left columns.

have higher effective pressure. It is interesting to note that the effective pressure drops locally at moulin locations in all 2-D models (Fig. 3b–i and k–r); this appears as small spikes along the lower bound of the pressure envelope (see also supplementary material).

4.3. Suite C: diurnal cycle

Suite C probes the time evolution of effective pressure and discharge in response to a diurnal meltwater forcing using the moulines of B5 as input locations (Fig. 4). Our discussion

focuses on Run C3 and the other Runs are plotted in supporting Figs. S6–9.

The primary difference between the models is the magnitude of the simulated diurnal effective pressure variation (Fig. 4b–k), which is chiefly dependent on the amount of available englacial and/or subglacial water storage. Participants running a model including a storage component were instructed to set it to zero. However, many models require some amount of storage for numerical reasons and, therefore, retained non-zero storage for this Suite. Models with no storage (*id*, *jd*, *as*, *og*, *mw*) show large effective

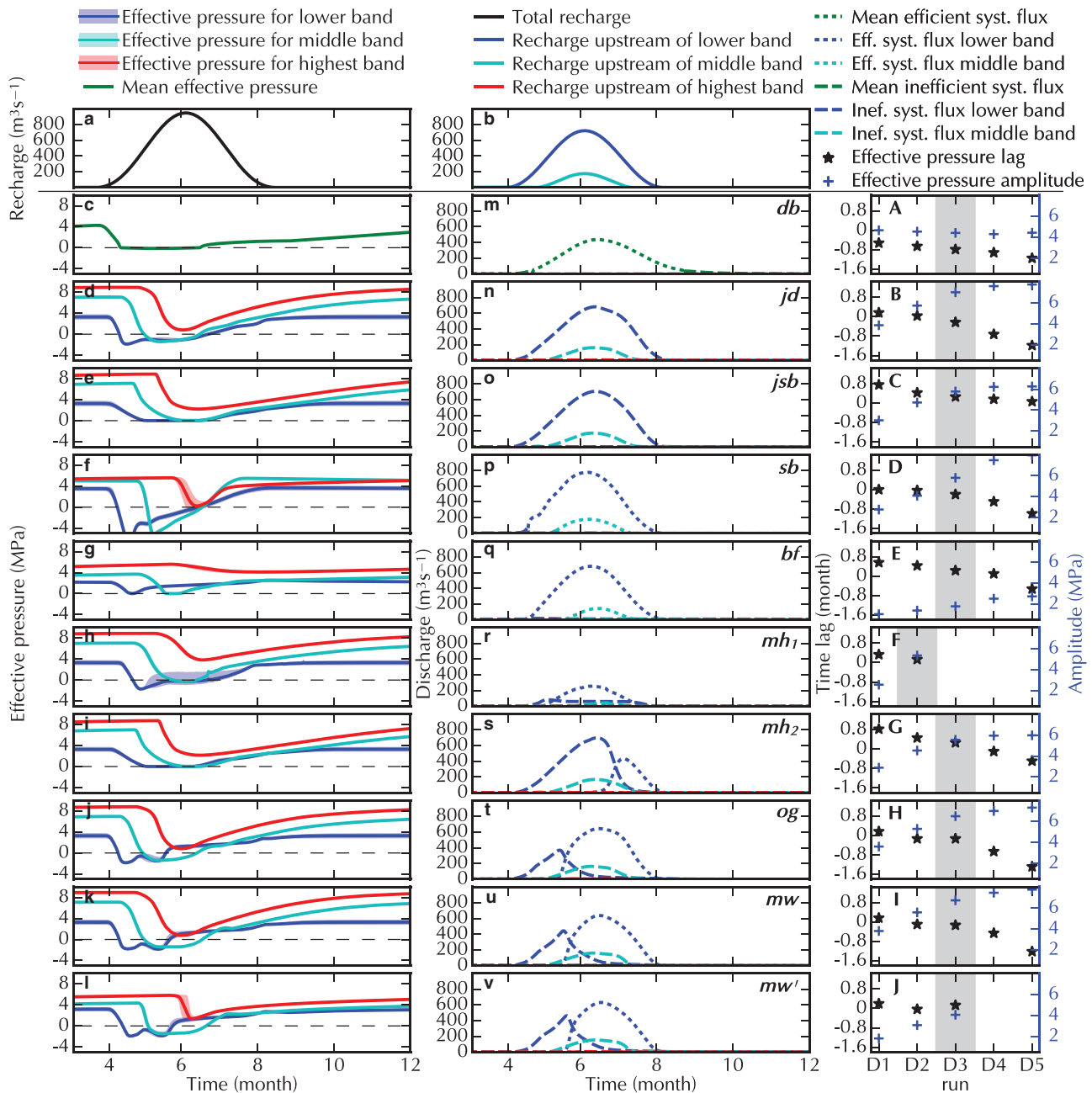


Fig. 5. Suite D results presented as in Fig. 4 but with the following differences: Middle column plots discharge at all three bands defined in Fig. 1a. The greyed region in the last column identifies the Run plotted in the two left columns.

pressure amplitude and minimal lag (1–2 h) between maximum recharge and minimum N (Fig. 4A–J). This pressure amplitude increases with the forcing amplitude hence lowering the daily averaged effective pressure with respect to that of B5. Conversely, models including a storage component (*jsb*, *sb*, *bf*, *mh₂*, *mw'*) have a very small effective pressure amplitude and the lag is ~ 6 h. This leads to a daily mean value of the effective pressure that is close to the steady-state value of Run B5. The impact of available water storage amount is nicely illustrated by the two submissions of the same model *mw* and *mw'*, the former using no storage, the latter using storage (Fig. 4j,k). Note that the models *jsb* and *mh₂* acquire their storage-like behaviour from solving a regularised pressure equation (Bueler and van Pelt, 2015) without actually storing water.

The same variations, or lack thereof, between storage and no-storage models also appear in the width-integrated

discharge of the lower band (Fig. 4l–u). The cavity-sheet/channels models with little storage (*og* and *mw*) show a larger amplitude in the efficient system discharge, because the recharge via moulins directly feeds that system. The cavity-sheet/(one-)channel models (*mh₂*, *og*, *mw* and *mw'*) show a partitioning of the discharge with $\sim 2/3$ in the efficient and $1/3$ in the inefficient system. In model *as*, most of the flux is through the inefficient system with a slight increase in efficient drainage when the recharge is at its maximum. Conversely, the two porous-layer models conduct most or all of the discharge in the efficient system.

4.4. Suite D: seasonal cycle

Suite D investigates the influence of seasonal forcing on the subglacial drainage system. This Suite uses a distributed recharge with increasing amplitude of the seasonal recharge

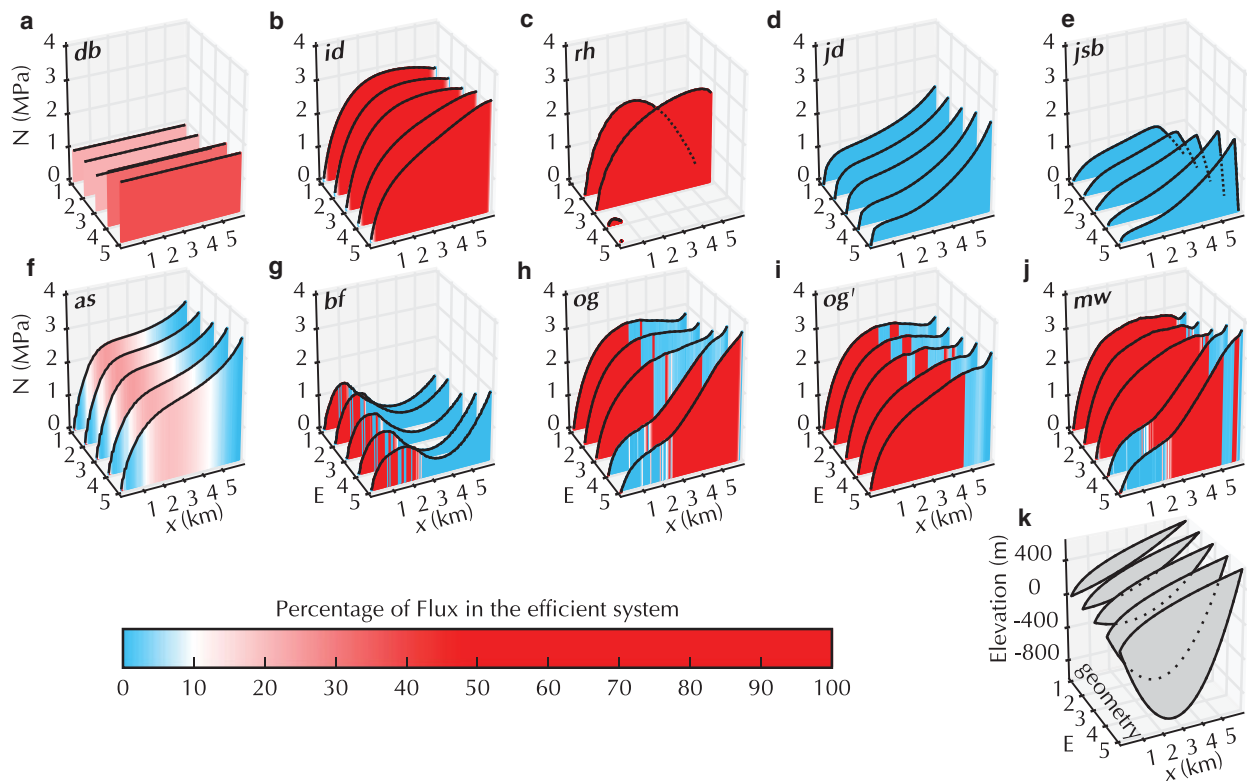


Fig. 6. Suite E results presented as in Fig. 2. The centreline topography used for each Run is shown in panel k. For the 2-D models, the effective pressure and the fraction of the flux in the efficient system are calculated by averaging values in a 200 m wide band along the centre-line (hatched band in Fig. 1b).

from D1 to D5. We focus the discussion on the Run D3 (Fig. 5) which is presented similar to the results of Suite C. The other Runs of this Suite are plotted in supporting Figs. S10–14.

During winter, the effective pressure in all of the model Runs is ~ 3 – 8 MPa with lower N in the lower bands (first column of Fig. 5). This is in contrast to recorded winter pressures (e.g. van de Wal and others, 2015), which tend to show effective pressures close to zero.

When the recharge increases in spring, the effective pressure drops in all models reproducing the commonly known spring event (Röthlisberger and Lang, 1987), which propagates upstream and reaches the highest band (90 km from the front) by mid-summer. In some bands, the models that do not cap N at zero obtain negative effective pressures, in many instances persisting for several months, during this phase. For all of the models aside from the double porous-layer (*bf*), the amplitude of the effective pressure drop is similar over the whole domain, whereas the *bf* model shows a notably smaller amplitude in the highest band of the domain.

The different models recover from this spring event in different ways. The main difference is the ability of the two-components model to develop an efficient system, which is observed on the distribution of the discharge between the two systems (middle column Fig. 5). The cavity-sheet/(one-)channels models initially carry most of the discharge in the distributed system before transitioning – but only in the lower band – to channelised drainage. The *mh*₂ model shows a later transition than the other three cavity-sheet/channels models (*og*, *mw*, *mw'*). The cavity-sheet/one-channel model (*mh*₁) still discharges a sizeable amount of water through its inefficient system when the channel is

active (see supporting Fig. S11 to compare D2 Runs). For the double porous-layer model (*bf*) and the single component models where a threshold is fixed to define efficient drainage (*db* and *sb*), the shift to efficient drainage occurs earlier in the season compared with the cavity-sheet/(one-)channels models. This shift is also more widespread, reaching as high as the middle band where the cavity-sheet/(one-)channels models show an efficient drainage only in the lower band. The cavity-sheet models show an asymmetric discharge with an increase that is slower than the recharge increase and a steeper discharge decrease at the end of the melt season.

The results of the higher storage Run *mw'* (compared with *mw*) indicate that higher storage leads to a lower effective pressure during winter and a delayed drop in the effective pressure in the highest band (red). Similar outputs occur with the porous layer models (*sb* and *bf*), but not with the models using storage as a means of stabilisation (*jsb* and *mh*₂).

The rightmost column of Fig. 5 shows the amplitude of the effective pressure variations and the time lag between the time of maximum recharge and minimum effective pressure for all D Runs. All models show similar trends for those two values: the effective pressure minimum occurs earlier as the water recharge increases (from D1 to D5). For most models, the effective pressure minimum follows peak recharge with lower recharge intensities, and precedes peak recharge with higher recharge intensities. The amplitude of the effective pressure variation also increases as discharge increases, except in the 0-D model (*db*). The latter is because the effective pressure in model *db* is restricted to positive values, thus limiting the amplitude of the response already for Run D1.

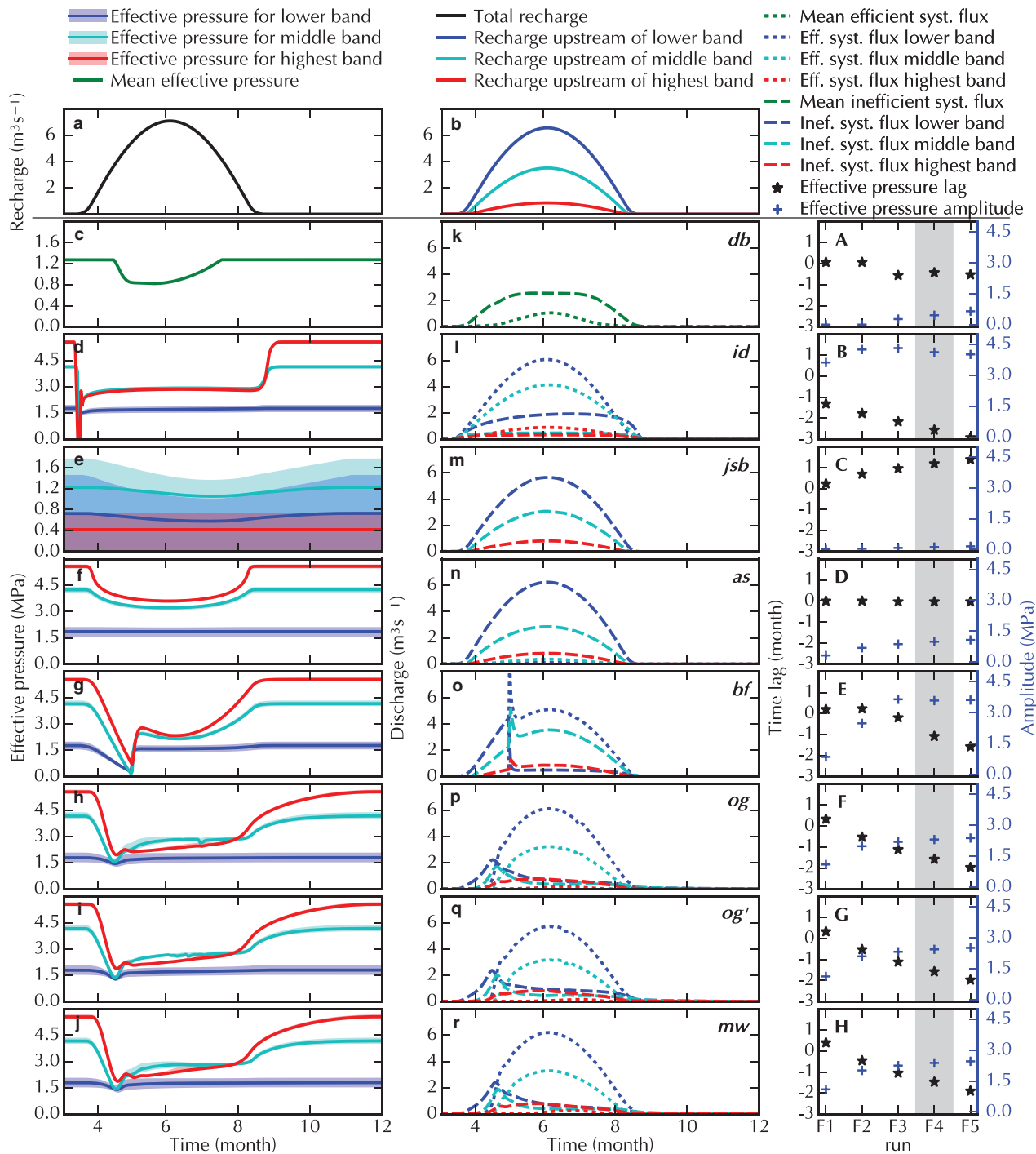


Fig. 7. Suite F results presented as in Fig. 5. The left and middle columns display results of Run F4. The three bands for which results are plotted are marked in Fig. 1b.

4.5. Suite E: overdeepening of valley topography

Suite E tests the influence of an overdeepening on the simulated steady-state drainage system (Fig. 6). This Suite is performed with the synthetic valley glacier topography shown in Fig. 1b. The main impact of an overdeepening should come through the pressure dependence of the melt-opening term (second term of Eqn (7)), which at the supercooling threshold (e.g. Werder, 2016) should lead to shutdown of R channels. The overdeepenings in the topography for Runs E1 to E3 are not sufficient to reach the supercooling threshold. This threshold first appears in the geometry for Run E4.

The R channel shutdown is seen in the channel model *rh*: for Run E3 the model produces positive effective pressures throughout; however, for E4 the model channel shuts down at ~ 1 km and N drops to 0, at which point the model fails. The *id* model has similar physics as *rh* but does not include the pressure-melt term in Eqn (7). Consequently, the overdeepening has very little influence on the shape of the effective pressure curve as the (constant) surface slope is then the dominating influence.

Similarly, the cavity-sheet models *jd* and *jsb* that have no pressure-melt dependence (Eqn (5)), show little impact of the overdeepening, producing positive effective pressures throughout. The pronounced difference between *jd* and *jsb*,

particularly towards the upper glacier, is due to the fact that the *jsb* model constrains water pressure to always be positive. This means that effective pressure has to go to zero at all boundaries (where ice thickness is zero), including the upper glacier margin. All other 1-D and 2-D models that submitted results for Suite E (and F) ignore such constraints and generally produce negative water pressures in part of the valley glacier domain (see supplementary material). The *as* model, which is also a cavity-sheet model but includes opening by melt and a pressure dependent term, shows small effects due to the overdeepening. The different discharge formulation used in this model allows for representation of laminar and turbulent flow regimes, as well as the wide transition between them, producing smooth transitions between inefficient and efficient systems. As the topography deepens, more of the bed is in a flow regime closer to laminar (i.e. lower Reynolds number, with linear dependence on potential gradient). This represents weakening of efficient system (or channel shutdown) as the overdeepening becomes deeper, and is apparent in the extension of the downstream blue region (inefficient system) from E1 to E5 in Fig. 6f.

The cavity-sheet/channels models (*og* and *mw*) show no negative effective pressures, unlike *rh*, even though they do contain the pressure-melt term. However, N is reduced markedly in Runs E4 and E5, in which the supercooling threshold is exceeded and in the same region the drainage system transitions from efficient for $x > 2$ km to inefficient for $0 < x < 2$ km. This means that the channel system does shut down and that the water is then carried in the cavity-sheet (and also in channels along the sides of the overdeepening, e.g. compare supporting Figs. S162 and S166). *og'* is similar to *og* but the pressure-melt term is turned off. This model, again, therefore shows very little impact of the overdeepening and the efficient system operates over the full length of the glacier.

The porous-layer model *bf* shows a pronounced impact of the valley topography, N changes only slightly as the overdeepening is enlarged, so the bed topography has little impact. The model suggests that an efficient drainage system would exist between the margin and $x = 2$ km, transitioning to an inefficient system at $x > 2$ km. This causes the effective pressure to drop to a minimum at $x = 4$ km.

For the 0-D model (*db*), which has no pressure-melt term, the effective pressure is similar for the first three Runs and then rises slightly for the last two. This is unlike the other models, which all show a decrease in effective pressure (albeit only a small one when there is no pressure-melt term). This effect may be caused by the use of an averaged topography in this lumped model.

4.6. Suite F: seasonal cycle on valley topography

Suite F has the same objective as Suite D – to explore the seasonal drainage cycle – but with the valley-glacier topography of E1, without an overdeepening (Fig. 1). The results are presented in the same style as Suites C and D with the discussion focusing on Run F4 (Fig. 7 and supplementary material).

During winter, the effective pressure in all models is relatively high and markedly higher than during times of melt-water input (left column). The lowest N is produced by the *jsb* model, particularly at the highest elevation. This is again because this model constrains the water pressure to be positive, as mentioned above. This is also why the

spread in effective pressures in the *jsb* model is the largest of all models (light coloured bands in Fig. 7e), as N is forced to zero at the lateral margins. All other models have very little lateral spread in effective pressure and they yield negative water pressures towards the margins.

As in Suite D, the models approximate a spring event when recharge sets in. However, in the case of this geometry, there are larger variations in the shape of the pressure drop and its subsequent recovery. The 0-D model *db* and the cavity-sheet models *as* and *jsb* show a gradual decrease in effective pressure. The ample water storage in model *jsb* explains this smoother evolution, while the low discharge through the efficient system of *as* model clarifies the evolution of its effective pressure. For the conduit model, *id*, the effective pressure response drops sharply in all elevation bands. This is followed by a rapid recovery to a steady summer value. The cavity-sheet/channels models *og*, *og'* and *mw* show a pronounced drop over about 1 month with a slight recovery after channelisation initiates (see discharge plot in middle column of Fig. 7). These models then enter a summer mode in which the effective pressure rises slowly and steadily during the melt season. The porous-layer model, *bf*, shows a more gradual drop to almost zero effective pressure and then a rapid recovery as the efficient layer is activated. This is also clearly visible in the discharge plots.

At the end of the summer, the return to the winter state happens at different rates. In models *db*, *id*, *as* and *bf* the return occurs simultaneously with recharge shutdown. The cavity-sheet/channels models *og*, *og'* and *mw* and the cavity-sheet model *jsb* recover much more slowly over the course of a few months. Notice, too, that in the cavity-sheet/channels model *og*, *og'* and *mw*, there is a clear difference in the slope of the effective pressure between the summer regime and the return to the winter state at the end of the melt season.

The dynamic response to the different magnitudes of forcings Runs F1–F5 (right column), shows that in most models the time of minimum effective pressure (taken as an average over the whole domain) leads the time of maximum recharge by ~ 1 month; this lead time increases with recharge intensity. Similarly, the amplitude of the effective pressure increases with increased forcing. Exceptions to this are: *jsb*, for which effective pressure lags recharge and the amplitude stays very low; and *as*, which shows an increasing amplitude but zero lag, because zero storage is used by this model in this Suite.

5. DISCUSSION

The SHMIP exercise consists of six Suites of four to six Runs each. The Suites are designed to facilitate a comparison of several different models of the subglacial drainage system. The experiments were designed to enable participation of a wide variety of models, with the only requirement being that the effective pressure was computed. This excluded some models, notably the routing-type models which use a hydraulic potential (and thus effective pressure) that is independent of the state of the drainage system (e.g. Le Brocq and others, 2009); as well as the models that only consider local water balances, such as subglacial till models (e.g. Tulaczyk and others, 2000; Bougamont and others, 2014). Nonetheless, our publicly available results could be re-interpreted in terms of discharge only and compared with outputs of those types of models.

To allow a comparison of models with different physical approaches, two reference simulations are provided. This allowed participation of models requiring tuning. The choice of the reference Runs (ice-sheet geometry, steady state and uniform input Runs A3 and A5) is such that fitting to these results should not bias the rest of the intercomparison, in which simulations with different characteristics are presented. Likewise, the choice of a cavity-sheet/channels model for this reference simulation (*mw*) is motivated by the fact that this approach is the most widespread and therefore these reference models give a set of parameters for the bulk of existing models. The tuning procedure (or need for tuning) was left to the discretion of the experimenter and was not a mandatory step of the intercomparison. Note that models that are tuned use parameter values that are similar to those used in other studies conducted with these same models.

The 13 participating models show a broad agreement between each other in all Suites. In particular, they agree with one of the fundamental theoretical considerations of subglacial drainage: in an inefficient drainage system a discharge increase will lead to a decrease in steady-state effective pressure and conversely, in an efficient drainage system, a discharge increase will lead to an increase in steady-state effective pressure (Fig. 2). Conversely, none of the models produce the low effective pressure that is usually observed during winter (e.g. Wright and others, 2016). The more specific responses of the models are generally comparable across groups of models incorporating similar physics (see ‘Model type’ in Table 1). In view of the complexity in analysing and interpreting the published subglacial hydrology records (e.g. Rada and Schoof, 2018), our discussion of the SHMIP results focuses primarily on an intercomparison of the model outputs. A direct comparison with observations is beyond the scope of this study and is left to a future SHMIP.

A large number of models use a cavity-sheet drainage system (*jd*, *jsb*, *as*, *mh₁*, *mh₂*, *og*, *mw*), which leads to consistent results for all of these in low recharge scenarios (A1–A3, winter period of D and F). The 0-D conduit model *db* also produces results consistent with the cavity-sheet models for those scenarios. The other models show different behaviours at low recharge: the two layered porous-layer models (*bf*) as well as macroporous-sheet model (*cdf*) produce much higher effective pressures than the cavity-sheet models. This is because the conductivity of the inefficient drainage system in these models does not adapt to the discharge of the system. Conversely, the 1-D channel or conduit models (*rh*, *id*), which are designed for higher recharge scenarios, show much lower effective pressure at low discharge, which is consistent with R channel. The scaling of the transmissivity to a cavity opening formulation in the single layer porous model (*sb*) allows a reduction in the layer conductivity at low discharge yielding effective pressure distributions closer to those of *mw*.

For higher recharge Runs, the response of the models with and without an efficient drainage component diverge as can be seen in Suite A (Run A4–A6) and E1 and E2 (which have no overdeepening). Notably, the representation of the efficient drainage system in the porous-layer models seems to capture the dynamics observed in the cavity-sheet/channels models for Suite A rather well. However, although the differences between cavity-sheet-only and cavity-sheet/channels models are large for the steady-state Runs (Suites A, B and

E), they are much smaller for seasonal forcings (Suites D and F). For example, *jd* is very similar to *mw* in Suite D except in the band closest to the margin (10–15 km, Fig. 5). The likely cause of this is that the transient ‘summer’ states in Suites D and F are far from a steady-state channelised system. This means that in those seasonal Runs the distributed system drains more of the subglacial discharge than it would in a steady state corresponding to a high magnitude summer recharge. This interpretation can be supported by field measurements. Based on borehole observations in a land-terminating area of the Greenland ice sheet, Meierbachtol and others (2013) suggested that channels do not reach further inland than ~20 km. In the same region, tracer experiments suggest that the channelised system extends inland at least 41 km but not as far as 57 km (Chandler and others, 2013).

The impact of topography on steady states can be seen by comparing results of the high recharge Runs of Suite A (A5, A6) with the Run E1 (or E2) of Suite E, in which there is no overdeepening and recharge is similar. The channel models (*db*, *id*, *rh*, *og*, *mw*) produce about double the values of effective pressure in E1 versus A6 (e.g. *id* in Fig. 2b vs. Fig. 6b). This is due to the steeper surface slopes and shorter glacier length in the valley domain. Similarly, the cavity-sheet-only models (*jd*, *jsb*, *as*) produce effective pressures near zero in A6, whereas in E1 they are ~1 MPa, again due to the influence of topography.

The moulin-recharge Suite B illustrates that the impact of localised input on average effective pressure is relatively minor in all models, with variations usually <10% of the ice overburden pressure. However, there is one exception: it matters where the upper moulin is located, as above that moulin the effective pressure is much higher than predicted by a uniform input. The farthest inland location where water reaches the glacier bed is indeed a topic of current studies (e.g. Poinar and others, 2015; Gagliardini and Werder, 2018; Hoffman and others, 2018a). Introducing localised inputs also modifies the local effective pressure (with lower effective pressure at the moulin locations) and the distribution of the efficient channelised drainage system (see supplementary figures). This decrease of effective pressure at moulin locations is consistent with observations that hydraulic head is higher in the vicinity of moulins (Gulley and others, 2012; Andrews and others, 2014).

The transient Runs illustrate the importance of storage (in the sense of a direct functional relationship between pressure and storage as in Eqn (10)) and also of storage-like effects that can arise from numerical regularisation. In the diurnal-variation Suite, C, storage impacts the amplitude of the pressure variation, with results ranging from almost zero (high storage) to 13 MPa (no storage) (Fig. 4). These amplitudes can be compared with observations from Haut Glacier d’Arolla (Gordon and others, 1998), where amplitudes varying from 0 to 0.9 MPa were observed in a cluster of boreholes. Note that two models, *jsb* and *mh₂*, do not implement actual storage but use a storage-like term to regularise the pressure equation (see Bueler and van Pelt, 2015). This results in some of the same effects as actual storage. The discharge also has a muted diurnal variation, compared with recharge, as storage increases. Therefore, observations of recharge and proglacial discharge could help further constrain the storage capacity of a glacier drainage system (e.g. Huss and others, 2007; Bartholomew and others, 2012; Brinkerhoff and others, 2016).

For the seasonal forcings (Suites D and F), storage has a lesser impact as the drainage system has more time to react to the more gradually changing recharge. In the *mw* model, increasing storage (*mw'*) leads to lower effective pressure during the winter and also to a delayed but sharper response in spring in the two higher elevation bands. The former is due to increased water flow (and thus lower *N*) during winter as more water can be released from storage. The latter is due to the dampening effect that increased storage has on the subglacial water pressure response.

The seasonal-forcing Runs of all models produce an effective pressure that is high, higher, in fact than at any time during the melt season (except for the porous-layer models in the highest elevation band in Suite D, Fig. 5f,g). This is contrary to many borehole observations (e.g. Fudge and others, 2005; Dow and others, 2011; Rada and Schoof, 2018), which show a shutdown of the drainage system leading to effective pressures around zero. There has been some recent progress in modelling such a shutdown (Hoffman and others, 2016; Dow and others, 2018; Downs and others, 2018; Rada and Schoof, 2018) but none of the participating models include such processes. An alternative view is that the participating models, as well as many others, only simulate a well-connected system which could potentially persist at high effective pressures throughout the winter with a footprint, however, small enough that it is rarely observed.

All the models show pronounced 'spring events', with low effective pressure as the surface melt forcing sets in (Iken and Bindshadler, 1986), in both Suites D and F. The effective pressure then increases again as the drainage system adjusts to the higher flux. Of note is that this increase in effective pressure also occurs in models with only an inefficient system, such as *jd* (Fig. 5d). This is because an inefficient system will also (transiently) respond to an increase in recharge with an effective pressure drop and a subsequent rise as the drainage space and thus the efficiency increases Eqn (4), as explained in Hoffman and Price (2014). The duration of the effective pressure drop varies from less than a month to several months. These pressure drops are consistent with observed speed-up events ranging from one to several months depending on the location of the measurements (Bartholomew and others, 2010; Hoffman and others, 2011; van de Wal and others, 2015).

Most models reach negative effective pressures in Suite D for extended periods of time in both the lower and middle band. The models that do not reach negative *N* either constrain it to be positive (*db*, *jsb*, *mh₂*) or, in the case of *bf*, instantly activate the efficient drainage system when *N*=0 is reached (this activation can be seen nicely in Fig. 7o). A positive *N* is arguably a more realistic behaviour as month-long periods of negative effective pressures over the large areas predicted by the other participating models is not observed and would have a much more dramatic impact on ice dynamics than 'spring events'. However, probably none of the models capture the drainage system dynamics correctly as *N* approaches zero, as then uplift of the ice, including non-local effects due to elastic and viscous behaviours, should occur (Tsai and Rice, 2010; Walker and others, 2017). Note that in the seasonal Suite, F, zero or negative effective pressures are reached only very briefly by *bf* and *id*. All others models have *N* > 0.7 MPa. Again this is due to the larger surface slopes and shorter length of the valley topography compared with the topography of Suite D.

The simulated transitions back to the winter state at the end of the melt season are of varying temporal length. The porous-layer models recover very quickly, in less than a month for Suite D and even more rapidly for F, afterwards the effective pressure only increases slightly. The cavity-sheet models, in addition to the 0-D-conduit model, *db*, react much more slowly. In Suite D they transition to the winter state over 3–4 months. The large-scale effective pressure considered in SHMIP (mean value over an altitudinal band rather than local effective pressure) is not necessarily suited for direct comparison with observations. However, the idea of different 'stages' (Rada and Schoof, 2018) is particularly helpful. The transition of effective pressure back to its winter level can be compared with 'stage 2', which lasts around a month and is approximately represented in our seasonal Suite F for the valley glacier topography. This result, however, depends on the interpretation of both the model results and the field observations and will be open for debate until more efficient ways to compare modelled and measured effective pressure are developed.

Of the participating models, the most physically complex models are the cavity-sheet/channels models. They largely reproduce theoretically expected behaviours as explained above. This is why we picked the outputs of such a model as tuning benchmarks (Runs A3 and A5 of *mw*). The models that used this tuning were the ones which use implementations based on different draining components: the macroporous-sheet model (*cdf*), the porous-layer models (*sb*, *bf*), a cavity-sheet model including energy dissipation (*as*) and another cavity-sheet model (*jd*) in only a subset of the experiments. None of the participating models incorporated physically-based theories of drainage other than cavity(-sheets) and R channels. Thus, models involving canals (Walder and Fowler, 1994) or other distributed drainage types (e.g. Creyts and Schoof, 2009) are not represented.

Models that implement only a cavity-sheet show shortcomings when applied to higher input scenarios, producing effective pressures that are too low. However, in the seasonal Runs, which are likely the most realistic forcings in this intercomparison exercise, they are not much different from the cavity-sheet/channels models even though recharge is high in mid summer. This high input can, in the case of these cavity-sheet only models, be accommodated by the increase in efficiency of the cavity-sheet system. This shows that they are probably applicable to many situations. However, they lack the fast rebound of the effective pressure in their frontal region, which might be quite relevant for ice dynamics (e.g. van de Wal and others, 2015). On the other hand, they benefit from less model complexity and from a clearer mathematical foundation, in the sense that they approximate a continuum solution (Bueler and van Pelt, 2015). The as model gains wider applicability by introducing the pressure melting-opening term (e.g. Run A6). The momentum equation used in this model facilitates the transition between flow regimes, thus allowing the process of self-organised channelisation to occur stably, while including the melt term everywhere (Sommers and others, 2018). Previous model formulations found the inclusion of a melt term to be problematic (Schoof and others, 2012) albeit possible (Dow and others, 2018).

The porous-layer models yield results that are similar to those of the cavity sheet/channels models for many of the Suites. The *sb* model is able to generate quite complex effective pressure variations with a single layer model. The double

layer approach of *bf* is applicable to the steeper valley glacier topography and produces a response comparable with that of the cavity sheet/channels models in Suite F.

The results from the 0-D, conduit model (*db*) show that simplification can be pushed far. The overall behaviour of the model is qualitatively in line with the more complex cavity sheet/channels models. However, the results of this model are biased toward lower effective pressure and compare better to values in the lower region of the domain than to the overall mean value of the spatially distributed models. This could be due not only to the design of the model itself, but also to the chosen parameterisation or chosen topography. Also notable is the fact that the *db* model is one of the few subglacial drainage models that has been rigorously fit to observations using Bayesian methods (Brinkerhoff and others, 2016); most other models have only been hand-tuned (if at all) to fit observations (e.g. de Fleurian and others, 2016; Koziol and Arnold, 2018).

The three 1-D models (*rh*, *cdf*, *id*) show results consistent with the theories they implement. Their shortcomings are likely related more to approximations of the theory than to the fact they are implemented in only one dimension. This is in part due to the fairly 1-D geometries of our test Suites. The performance of these models suggests that 1-D models are valuable in settings where geometry can be reduced to a flow line with insignificant lateral variation.

6. CONCLUSION

Thirteen models participated in this first SHMIP. They incorporate a wide range of different drainage system types, with a focus on inefficient drainage through linked-cavities, efficient drainage through R channels and approximations of both of these systems by using drainage through porous-layers. All participating models were required to calculate effective pressure distributions. Models incorporating other physically based theories of drainage such as canals (Walder and Fowler, 1994) or other distributed drainage types (e.g. Creyts and Schoof, 2009) did not participate. Routing models were excluded because they fail to compute effective pressure, which is a diagnostic variable in our tests

The test Suites of SHMIP cover a range of scenarios similar to those to which subglacial drainage models are currently applied. The Suites use synthetic, idealised topographies of a land-terminating ice-sheet margin and a mountain glacier, with idealised recharge forcing, ranging from steady input to seasonal and diurnal variations. However, a few interesting and relevant scenarios are not included, such as the classic test case of jökulhlaups (e.g. Nye, 1976; Clarke, 2003; Flowers and others, 2004). A tidewater glacier test-case is also missing, although such a case would be interesting in both Greenland-like and Antarctica-like scenarios (e.g. Dow and others, 2016). Considering realistic modelling, some more complex forcings, such as a seasonal forcing with superimposed diurnal variations, and also real glacier topography would be of interest. These will be useful test targets to be included in a future iteration of SHMIP.

This intercomparison project provides a qualitative comparison of several state-of-the-art and legacy subglacial hydrology models. The use of a two-component model is strongly advised when considering high recharge scenarios, complex topographies, or observing short-term variations in the subglacial hydrological system. For larger systems with

low water fluxes, the use of a cavity-sheet only model should be considered as they achieve results comparable with more complex cavity-sheet/channels models. These cavity-sheet/channels models are required when the dynamics of the efficient system is important, as in valley glaciers, or when recharge is constant enough to let channels develop. Porous layer models are a viable approximation to the more physically realistic approaches in that they capture, qualitatively, the inefficient and efficient system dynamics, but a careful assessment of their parameters and flux formulations should be performed to ensure that they accurately represent the flow regime corresponding to the recharge applied to the model.

This intercomparison reveals that the effect of localised drainage is important on small scales but does not have a significant impact on the overall distribution of water pressure. However, special care should be taken when specifying the location of the highest-altitude input point, as this altitude has a significant effect on the subglacial water pressure downstream.

Experiments introducing diurnal and seasonal variations emphasise the impact of water storage on the results of the models and more particularly on the timing of their response in terms of pressure. This could enable the parameterisation of storage from observations of the lag between water input and pressure response, and also put a constraint on models which introduce storage as part of their equations (e.g. the porous layer models) or as a stabilisation mechanism (e.g. as in *mh*₁).

Another well-known and important point, also highlighted by this exercise, is the need to use appropriate model parameters. However, these parameters are often largely unknown and future efforts should focus on inferring them from observations (e.g. Werder and others, 2010; Brinkerhoff and others, 2016), or through other means such as laboratory experiments. Once these techniques of parameter inversion of subglacial drainage models become more established and reliable, a SHMIP exercise using observational data will become viable.

7. CONTRIBUTION STATEMENT

B.dF. and M.A.W. designed the experiments, ran their respective models, analysed the model results and wrote the paper. All the other co-authors ran their respective models and provided feedback both on the intercomparison design and paper writing.

SUPPLEMENTARY MATERIAL

The supplementary material for this article can be found at <https://doi.org/10.1017/jog.2018.78>

ACKNOWLEDGMENTS

B.dF. and M.A.W. want to thank everyone that took part in the discussions leading to SHMIP (Tim Creyts, Ian Hewitt, Christian Schoof, Gwenn Flowers, Jesse Johnson, Ed Bueler, Ugo Nanni, Angelika Humbert, Alison Banwell, Ian Willis, Stephen Price and others).

B.dF. was supported by the European Research Council under the European Community 7th Framework Programme (FP7/2007–2013)/ERC under Grant Number 610055 (ICE2ICE) and computations were performed on

resources provided by UNINETT Sigma2 – the National Infrastructure for High Performance Computing and Data Storage in Norway.

S.B. was supported by the GreenRISE project, a project funded by Leibniz-Gemeinschaft: WGL Pakt für Forschung SAW2014-PIK-1. I.D. was supported by the Swiss National Science Foundation (SNSF) National Research Programme (NRP) 70 ‘Energy Turnaround’, Project No.153927. C.D. was supported by the Canada Research Chairs Programme and the Natural Sciences and Engineering Research Council of Canada (Discovery – RGPIN-03761-2017).

J.D. wants to thank Jesse Johnson for his help in implementing the model, he was funded for this work by NSF grant 1543533. O.G. was supported by the Agence Nationale pour la Recherche (ANR) through the SUMER project (Blanc SIMI 6-2012).

M.J.H. was supported by the Laboratory Directed Research and Development Early Career Research Program at Los Alamos National Laboratory (20160608ECR). J.S. was supported by the Swiss National Science Foundation (SNSF) grant no. 200021-153179/1 to M. Funk and the Swiss National Supercomputing Centre (CSCS) allocation no. s573 to J. Seguinot.

A.S. was supported primarily by a NASA Earth and Space Science Fellowship (NNX14AL24H), and thanks Harihar Rajaram and Mathieu Morlighem for their invaluable contributions to model formulation and development. The authors want to thank two anonymous reviewers and the editor F. Pattyn for constructive comments that help to improve this manuscript.

REFERENCES

- Andrews LC and 7 others (2014) Direct observations of evolving subglacial drainage beneath the Greenland ice sheet. *Nature*, **514** (7520). (doi: 10.1038/nature13796) pp 80–83
- Bartholomew I and 5 others (2010) Seasonal evolution of subglacial drainage and acceleration in a Greenland outlet glacier. *Nat. Geosci.*, **3**(6), 408–411
- Bartholomew I and 5 others (2012) Short-term variability in Greenland Ice Sheet motion forced by time-varying meltwater drainage: implications for the relationship between subglacial drainage system behavior and ice velocity. *J. Geophys. Res.*, **117**(F3), F03002
- Beyer S, Kleiner T, Aizinger V, Rückamp M and Humbert A (2017) A confined–unconfined aquifer model for subglacial hydrology and its application to the north east Greenland ice stream. *Cryosphere Discussions*, 2017, in review (doi: 10.5194/tc-2017-221)
- Bougamont M and 5 others (2014) Sensitive response of the Greenland Ice Sheet to surface melt drainage over a soft bed. *Nat. Commun.*, **5**, (doi: 10.1038/ncomms6052) pp 1–9
- Brinkerhoff DJ, Meyer CR, Bueler E, Truffer M and Bartholomew TC (2016) Inversion of a glacier hydrology model. *Ann. Glaciol.*, **57** (72), 84–95
- Bueler E and van Pelt W (2015) Mass-conserving subglacial hydrology in the Parallel Ice Sheet Model version 0.6. *Geosci. Model Dev.*, **8**(6), 1613–1635
- Chandler D and 9 others (2013) Evolution of the subglacial drainage system beneath the Greenland Ice Sheet revealed by tracers. *Nat. Geosci.*, **6**(3), 195–198
- Clarke GKC (1987) A short history of scientific investigations on glaciers. *J. Glaciol.*, **33**(S1), The Commemorative Special Issue, 4–24
- Clarke GKC (2003) Hydraulics of subglacial outburst floods: new insights from the Spring-Hutter formulation. *J. Glaciol.*, **49**(165), 299–313
- Creyts TT and Schoof CG (2009) Drainage through subglacial water sheets. *J. Geophys. Res.*, **114**(F4), F04008
- Cuffey KM and Paterson WSB (2010) *The Physics of Glaciers*, 4th Edn. Oxford: Elsevier
- de Fleurian B and 6 others (2014) A double continuum hydrological model for glacier applications. *Cryosphere*, **8**(1), 137–153
- de Fleurian B and 8 others (2016) A modeling study of the effect of runoff variability on the effective pressure beneath Russell Glacier, West Greenland. *J. Geophys. Res.*, **121**(10) (doi: 10.1002/2016JF003842) pp 1834–1848
- de Fleurian B and 11 others (2018) Results from the SHMIP exercise. e-collection (doi: 10.3929/ethz-b-000249168)
- Dow CF, Kavanaugh JL, Sanders JW, Cuffey KM and MacGregor KR (2011) Subsurface hydrology of an overdeepened cirque glacier. *J. Glaciol.*, **57**(206), 1067–1078
- Dow CF, Werder MA, Nowicki S and Walker RT (2016) Modeling Antarctic subglacial lake filling and drainage cycles. *Cryosphere*, **10**(4), 1381–1393
- Dow CF, Karlsson NB and Werder MA (2018) Limited impact of subglacial supercooling freeze-on for Greenland Ice Sheet stratigraphy. *Geophys. Res. Lett.*, **45**(3), 1481–1489
- Downs J, Johnson J, Harper J, Meierbachtol T and Werder M (2018) Dynamic hydraulic conductivity reconciles mismatch between modeled and observed winter subglacial water pressure. *J. Geophys. Res.*, **123**(4), 818–836
- Doyle SH and 6 others (2014) Persistent flow acceleration within the interior of the Greenland Ice Sheet. *Geophys. Res. Lett.*, **41**(3), 899–905
- Engelhardt H and Kamb B (1998) Basal sliding of Ice Stream B, West Antarctica. *J. Glaciol.*, **44**(147), 223–230
- Farinotti D and 36 others (2017) How accurate are estimates of glacier ice thickness? Results from ITMIX, the Ice Thickness Models Intercomparison eXperiment. *Cryosphere*, **11**(2), 949–970
- Flowers GE (2015) Modelling water flow under glaciers and ice sheets. *Proc. R. Soc. A*, **471**(2176), 1–41
- Flowers GE and Clarke GKC (2002) A multicomponent coupled model of glacier hydrology – 1. Theory and synthetic examples. *J. Geophys. Res.*, **107**(B11), 2287.
- Flowers GE, Björnsson H, Pálsson F and Clarke GKC (2004) A coupled sheet-conduit mechanism for jökulhlaup propagation. *Geophys. Res. Lett.*, **31**(5), 1–4
- Fudge TJ, Harper JT, Humphrey NF and Pfeffer WT (2005) Diurnal water-pressure fluctuations: timing and pattern of termination below Bench Glacier, Alaska, USA. *Ann. Glaciol.*, **40**(1), 102–106
- Fudge TJ, Humphrey NF, Harper JT and Pfeffer WT (2008) Diurnal fluctuations in borehole water levels: configuration of the drainage system beneath Bench Glacier, Alaska, USA. *J. Glaciol.*, **54** (185), 297–306
- Gagliardini O and Werder MA (2018) Influence of an increasing surface melt over decadal timescales on land terminating outlet glaciers. *J. Glaciol.*, 1–11 (doi: 10.1017/jog.2018.59)
- Gordon S and 5 others (1998) Seasonal reorganization of subglacial drainage inferred from measurements in boreholes. *Hydrol. Process.*, **12**(1), 105–133
- Gulley JD and 5 others (2012) The effect of discrete recharge by moulins and heterogeneity in flow-path efficiency at glacier beds on subglacial hydrology. *J. Glaciol.*, **58**(211), 926–940
- Hewitt IJ (2011) Modelling distributed and channelized subglacial drainage: the spacing of channels. *J. Glaciol.*, **57**(202), 302–314
- Hewitt IJ (2013) Seasonal changes in ice sheet motion due to melt water lubrication. *Earth Planet. Sci. Lett.*, **371–372**(0), 16–25
- Hoffman M and Price S (2014) Feedbacks between coupled subglacial hydrology and glacier dynamics. *J. Geophys. Res.*, **119**(3), 414–436
- Hoffman MJ, Catania GA, Neumann TA, Andrews LC and Rumrill JA (2011) Links between acceleration, melting, and supraglacial lake drainage of the western Greenland ice sheet. *J. Geophys. Res.*, **116**(F04035), 1–16

- Hoffman MJ and 9 others (2016) Greenland subglacial drainage evolution regulated by weakly connected regions of the bed. *Nature Comms.*, **7**, (doi: 10.1038/ncomms13903) pp 1–11
- Hoffman MJ and 7 others (2018a) Widespread moulin formation during supraglacial lake drainages in Greenland. *Geophys. Res. Lett.*, **45**(2), 778–788
- Hoffman MJ and 9 others (2018b) MPAS-Albany Land Ice (MALI): a variable-resolution ice sheet model for earth system modeling using voronoi grids. *Geosci. Model Dev.*, **11**(9), 3747–3780
- Hooke RL, Laumann T and Kohler J (1990) Subglacial water pressure and the shape of subglacial water conduits. *J. Glaciol.*, **36**(122), 67–71
- Huss M, Bauder A, Werder M, Funk M and Hock R (2007) Glacier-dammed lake outburst events of Gornensee, Switzerland. *J. Glaciol.*, **53**(181), 189–200
- Huybrechts P, Payne A, the EISMINT Intercomparison Group (1996) The EISMINT benchmarks for testing ice-sheet models. *Ann. Glaciol.*, **23**, 1–14
- Iken A and Bindshadler RA (1986) Combined measurements of subglacial water pressure and surface velocity of Findelengletscher, Switzerland: conclusions about drainage system and sliding mechanism. *J. Glaciol.*, **32**(110) (doi: 10.3189/S0022143000006936) pp 101–119
- Iken A and Truffer M (1997) The relationship between subglacial water pressure and velocity of Findelengletscher, Switzerland, during its advance and retreat. *J. Glaciol.*, **43**(144), 328–338
- Iken A, Echelmeyer K, Harrison W and Funk M (1993) Mechanisms of fast flow in Jakobshavn-Isbræ, West Greenland. 1. measurements of temperature and water-level in deep boreholes. *J. Glaciol.*, **39**(131), 15–25
- Joughin I, Smith BE and Howat I (2018) Greenland ice mapping project: Ice flow velocity variation at submonthly to decadal time scales. *Cryosphere*, **12**(7), 2211–2227
- Kamb B (1987) Glacier surge mechanism based on linked cavity configuration of the basal water conduit system. *J. Geophys. Res.*, **92**(B9), 9083–9099
- Kessler MA and Anderson RS (2004) Testing a numerical glacial hydrological model using spring speed-up events and outburst floods. *Geophys. Res. Lett.*, **31**(18), 1–5
- Koziol CP and Arnold N (2018) Modelling seasonal meltwater forcing of the velocity of land-terminating margins of the Greenland Ice Sheet. *Cryosphere*, **12**(3), 971–991
- Le Brocq A, Payne A, Siegert M and Alley R (2009) A subglacial water-flow model for West Antarctica. *J. Glaciol.*, **55**(193), 879–888
- Meierbachtol T, Harper J and Humphrey N (2013) Basal drainage system response to increasing surface melt on the Greenland Ice Sheet. *Science*, **341**(6147), 777–779
- Morlighem M, Seroussi H, Larour E and Rignot E (2013) Inversion of basal friction in Antarctica using exact and incomplete adjoints of a higher-order model. *J. Geophys. Res.*, **118**(3), 1746–1753
- Nye JF (1973) Water at the bed of a glacier. Technical report, H. H. Wills Physics Laboratory, University of Bristol, Bristol, England
- Nye JF (1976) Water flow in glaciers: jökulhlaups, tunnels and veins. *J. Glaciol.*, **17**(76), 181–207
- Oreskes N, Shrader-Frechette K and Belitz K (1994) Verification, validation, and confirmation of numerical models in the earth sciences. *Science*, **263**(5147), 641–646
- Pattyn F and 20 others (2008) Benchmark experiments for higher-order and full-stokes ice sheet models (ISMIP-HOM). *Cryosphere*, **2**(2), 95–108
- Pattyn F and 18 others (2012) Results of the Marine Ice Sheet Model Intercomparison Project, MISIMIP. *Cryosphere*, **6**(3), 573–588
- Pattyn F and 27 others (2013) Grounding-line migration in plan-view marine ice-sheet models: results of the ice2sea MISIMIP3d intercomparison. *J. Glaciol.*, **59**(215), 410–422
- Payne AJ and 10 others (2000) Results from the EISMINT model intercomparison: the effects of thermomechanical coupling. *J. Glaciol.*, **46**(153), 227–238
- Pimentel S and Flowers GE (2010) A numerical study of hydrologically driven glacier dynamics and subglacial flooding. *Proc. R. Soc. A*, **467**(2126), 537–558
- Poinar K and 5 others (2015) Limits to future expansion of surface-melt-enhanced ice flow into the interior of western Greenland. *Geophys. Res. Lett.*, **42**(6), 1800–1807
- Rada C and Schoof C (2018) Channelized, distributed, and disconnected: subglacial drainage under a valley glacier in the Yukon. *Cryosphere*, **12**(8), 2609–2636
- Ridley J, Gregory JM, Huybrechts P and Lowe J (2010) Thresholds for irreversible decline of the Greenland Ice Sheet. *Clim. Dynam.*, **35**(6), 1049–1057
- Röthlisberger H (1972) Water pressure in intra- and subglacial channels. *J. Glaciol.*, **11**(62), 177–203
- Röthlisberger H and Lang H (1987) *Glacio-Fluvial Sediment Transfer: An Alpine Perspective*. New York, NY, USA: John Wiley and Sons
- Schoof C (2010) Ice-sheet acceleration driven by melt supply variability. *Nature*, **468**(7325), 803–806
- Schoof C, Hewitt J and Werder MA (2012) Flotation and free surface flow in a model for subglacial drainage. Part I: Distributed drainage. *J. Fluid Mech.*, **702**, 126–156
- Shannon SR and 18 others (2013) Enhanced basal lubrication and the contribution of the Greenland Ice Sheet to future sea-level rise. *P. Natl. Acad. Sci. USA*, **110**(35), 14156–14161
- Shoemaker EM (1986) Subglacial hydrology for an ice sheet resting on a deformable aquifer. *J. Glaciol.*, **32**(110), 20–30
- Shreve RL (1972) Movement of water in glaciers. *J. Glaciol.*, **11**(62), 205–214
- Smith LC and 22 others (2017) Direct measurements of meltwater runoff on the Greenland ice sheet surface. *P. Natl. Acad. Sci. USA*, **114**(50), E10622–E10631
- Sole A and 6 others (2013) Winter motion mediates dynamic response of the Greenland Ice Sheet to warmer summers. *Geophys. Res. Lett.*, **40**(15), 3940–3944
- Sommers A, Rajaram H and Morlighem M (2018) Shakti: Subglacial hydrology and kinetic transient interactions v1.0. *Geosci. Model Dev.*, **11**(7), 2955–2974
- Spring U and Hutter K (1982) Conduit flow of a fluid through its solid phase and its application to intraglacial channel flow. *Int. J. of Eng. Sci.*, **20**, 327–363
- Tedstone AJ and 5 others (2015) Decadal slowdown of a land-terminating sector of the Greenland Ice Sheet despite warming. *Nature*, **526**(7575), 692–695
- Teutsch G and Sauter M (1991) Groundwater modeling in karst terranes: Scale effects, data acquisition and field validation. In *Third Conference on Hydrogeology, Ecology, Monitoring, and Management of Ground Water in Karst Terranes*. National Ground Water Association, Dublin, Ohio, pp. 17–35.
- Tsai VC and Rice JR (2010) A model for turbulent hydraulic fracture and application to crack propagation at glacier beds. *J. Geophys. Res.*, **115**(F3), F03007..
- Tulaczyk S, Kamb WB and Engelhardt HF (2000) Basal mechanics of Ice Stream B, West Antarctica: 2. Undrained plastic bed model. *J. Geophys. Res.*, **105**(B1), 483–494
- van de Wal RSW and 6 others (2008) Large and rapid melt-induced velocity changes in the ablation zone of the Greenland Ice Sheet. *Science*, **321**(5885), 111–113
- van de Wal RSW and 10 others (2015) Self-regulation of ice flow varies across the ablation area in south-west Greenland. *Cryosphere*, **9**(2), 603–611
- Vaughan DG and 12 others (2013) *Observations: Cryosphere*. In: *Climate Change 2013: The Physical Science Basis. Contribution of Working Group I to the Fifth Assessment Report of the Intergovernmental Panel on Climate Change*. Cambridge University Press, Cambridge, United Kingdom and New York, NY, USA (doi: 10.1017/CBO9781107415324)
- Walder JS (1986) Hydraulics of subglacial cavities. *J. Glaciol.*, **32**(112), 439–445
- Walder JS and Fowler A (1994) Channelized subglacial drainage over a deformable bed. *J. Glaciol.*, **40**(134), 3–15

- Walker RT, Werder MA, Dow CF and Nowicki SMJ (2017) Determining ice-sheet uplift surrounding subglacial lakes with a viscous plate model. *Front. Earth Sci.*, **5**, 103
- Weertman J (1962) Catastrophic glacier advances. In *Union Géodésique et Géophysique Internationale, Association Internationale d'Hydrologie Scientifique. Colloque d'Obergurgl 10–18 September 1962*, 31–39
- Werder MA (2016) The hydrology of subglacial overdeepenings: a new supercooling threshold formula. *Geophys. Res. Lett.*, **43** (5), 2045–2052
- Werder MA, Schuler TV and Funk M (2010) Short term variations of tracer transit speed on alpine glaciers. *Cryosphere*, **4**, 381–396
- Werder MA, Hewitt IJ, Schoof CG and Flowers GE (2013) Modeling channelized and distributed subglacial drainage in two dimensions. *J. Geophys. Res.*, **118**, 1–19
- Wright PJ, Harper JT, Humphrey NF and Meierbachtol TW (2016) Measured basal water pressure variability of the western greenland ice sheet: Implications for hydraulic potential. *J. Geophys. Res.*, **121**(6), 1134–1147

MS received 12 March 2018 and accepted in revised form 24 September 2018; first published online 24 October 2018