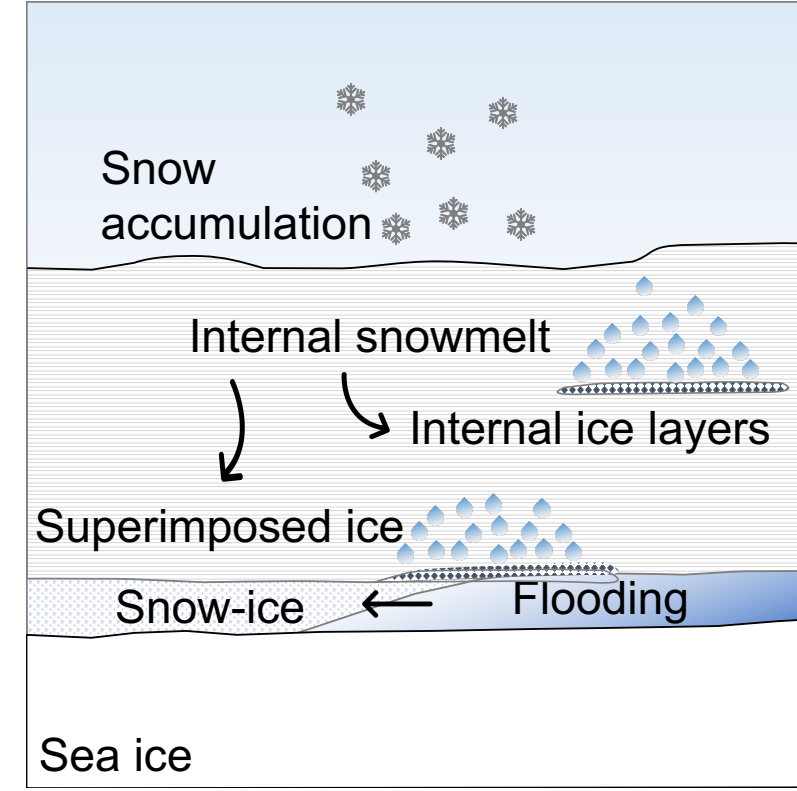


# Snowmelt processes on Antarctic sea ice observed by satellite scatterometers



## Introduction

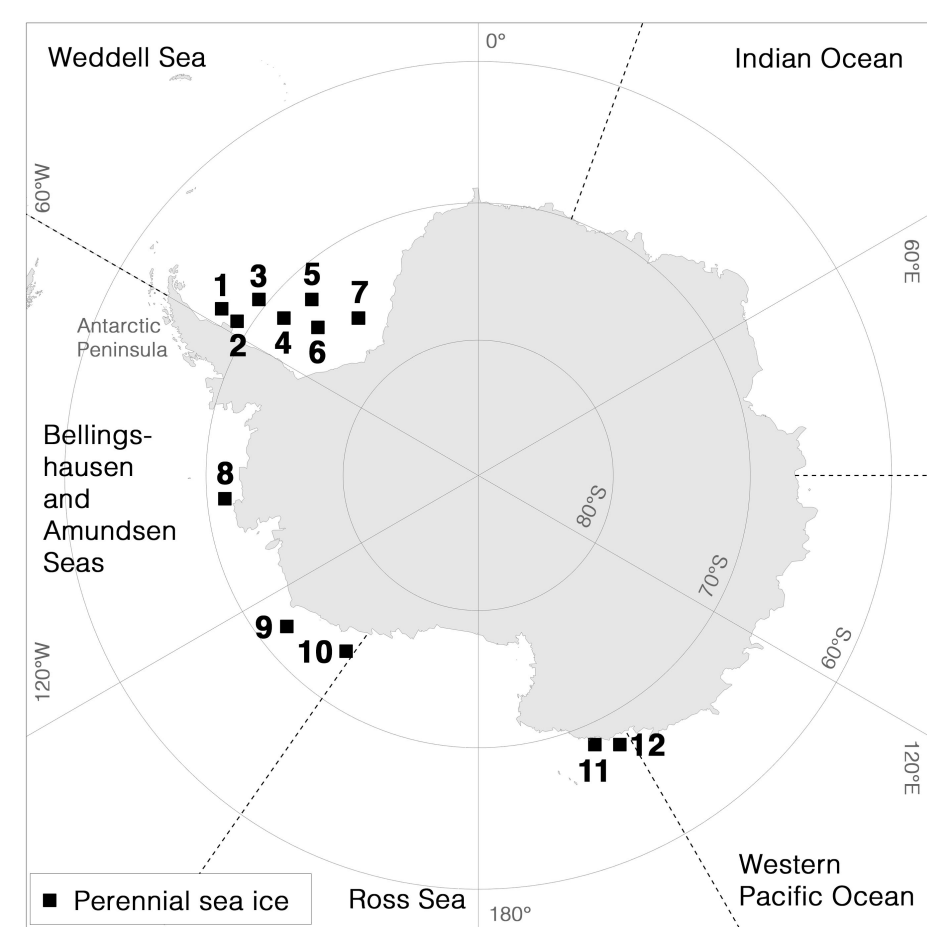
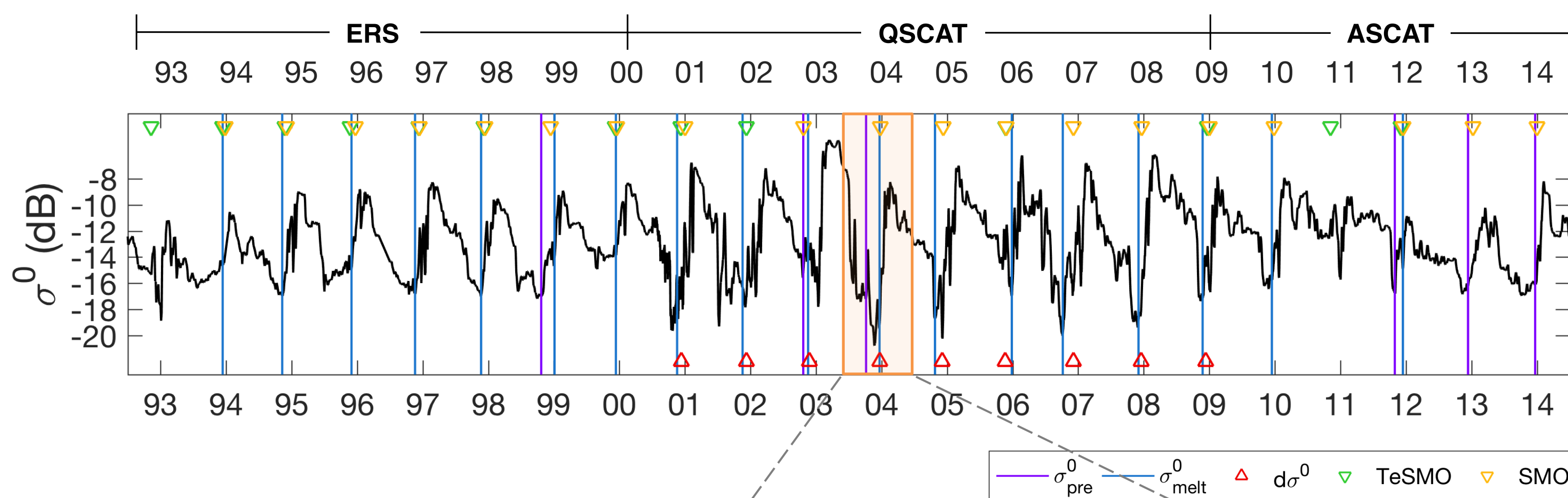
Snowmelt processes on sea ice are the key drivers determining the seasonal sea-ice energy and mass budgets. While there is strong surface melt on Arctic sea ice, snowmelt on Antarctic sea ice is weak with most snow surviving the summer. Here, we compile time series of snowmelt onset dates on perennial Antarctic sea ice from 1992 to 2014 using active microwave observations from European Remote Sensing Satellite (ERS-1/2), Quick Scatterometer (QSCAT) and Advanced Scatterometer (ASCAT) radar scatterometers. Describing snow melt processes, we define two transition stages: A weak backscatter rise indicating the initial warming and metamorphosis of the snowpack (pre-melt), followed by a rapid rise indicating the onset of thaw-freeze cycles (snowmelt).



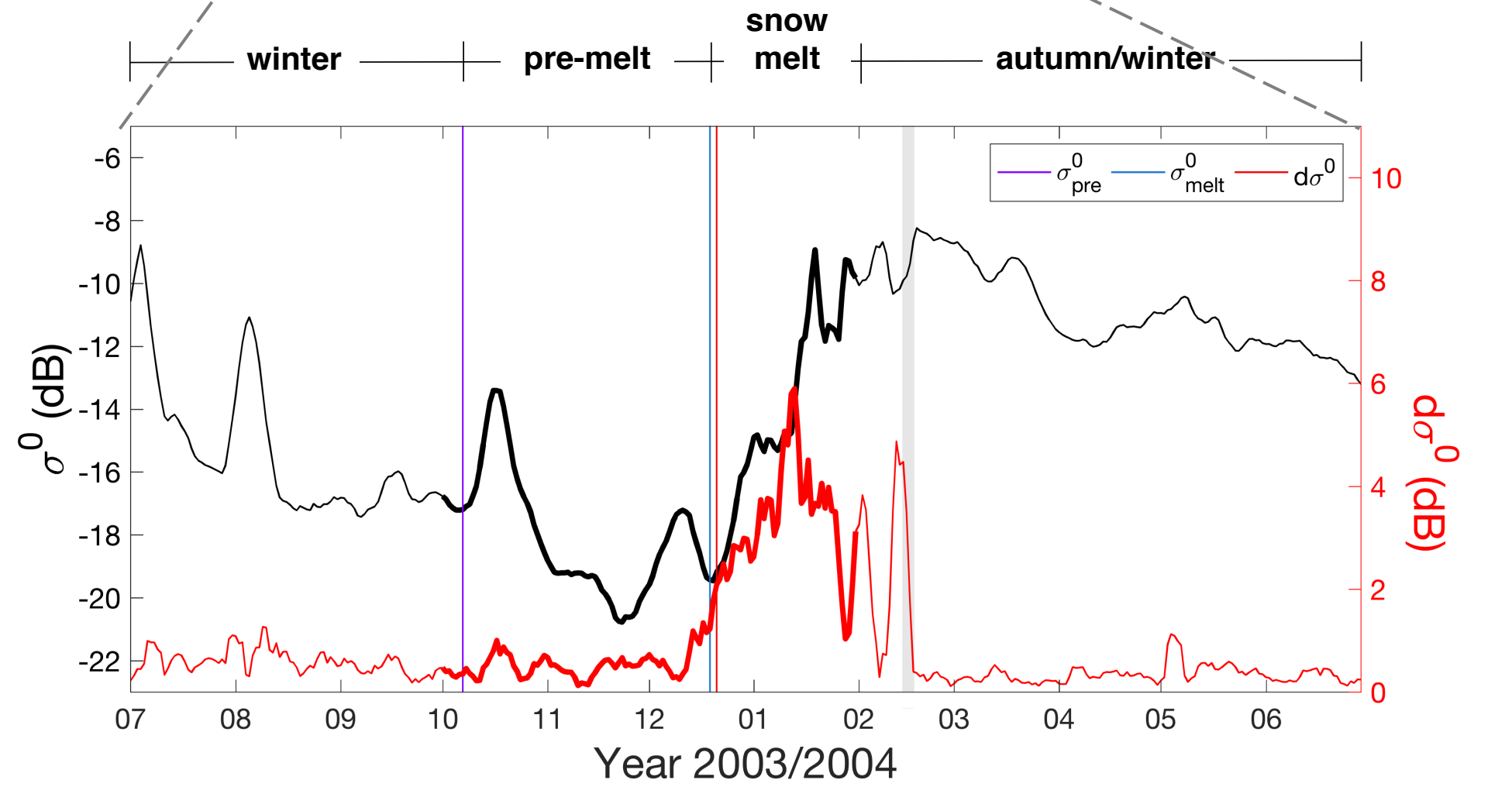
Small-scale processes at the snow/ice interface modifying the Antarctic sea-ice mass budget.

## Method

- Analysis of the **seasonal cycle of radar backscatter** (Ku-band at 13 GHz, C-band at 5.6 GHz)
- Analysis of **diurnal variations in radar backscatter** for Ku-band time series (QSCAT, 2000 – 2009)



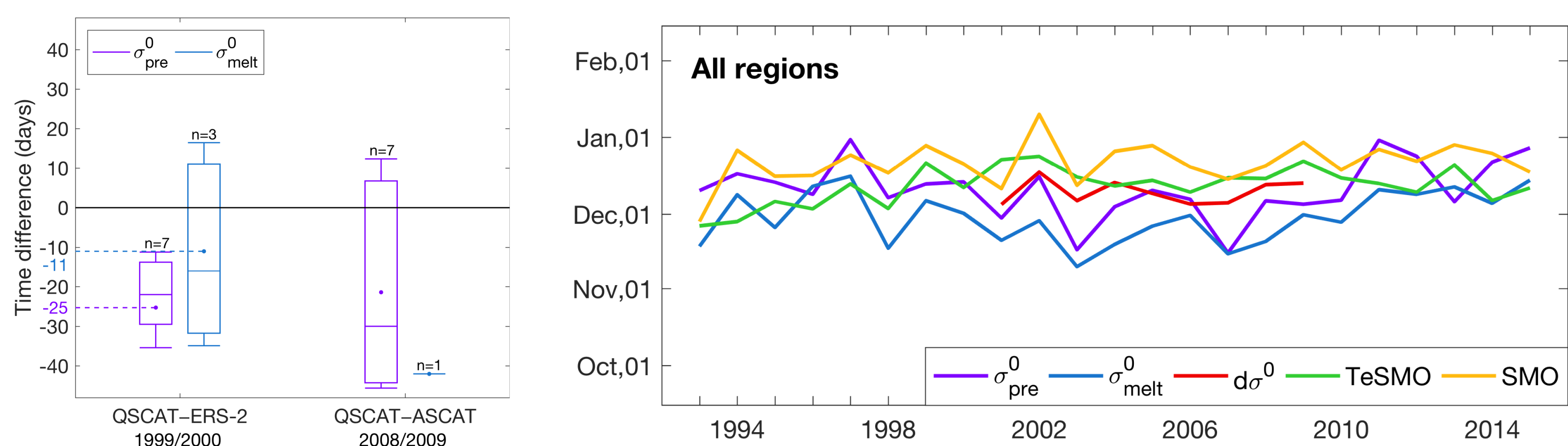
Map of Antarctica showing the 12 study locations on perennial sea ice.



Typical annual time series of radar backscatter ( $\sigma^0$ , black) and its diurnal variations ( $d\sigma^0$ , red) for perennial sea ice (Weddell Sea, region 2).

## Compilation of snowmelt onset time series

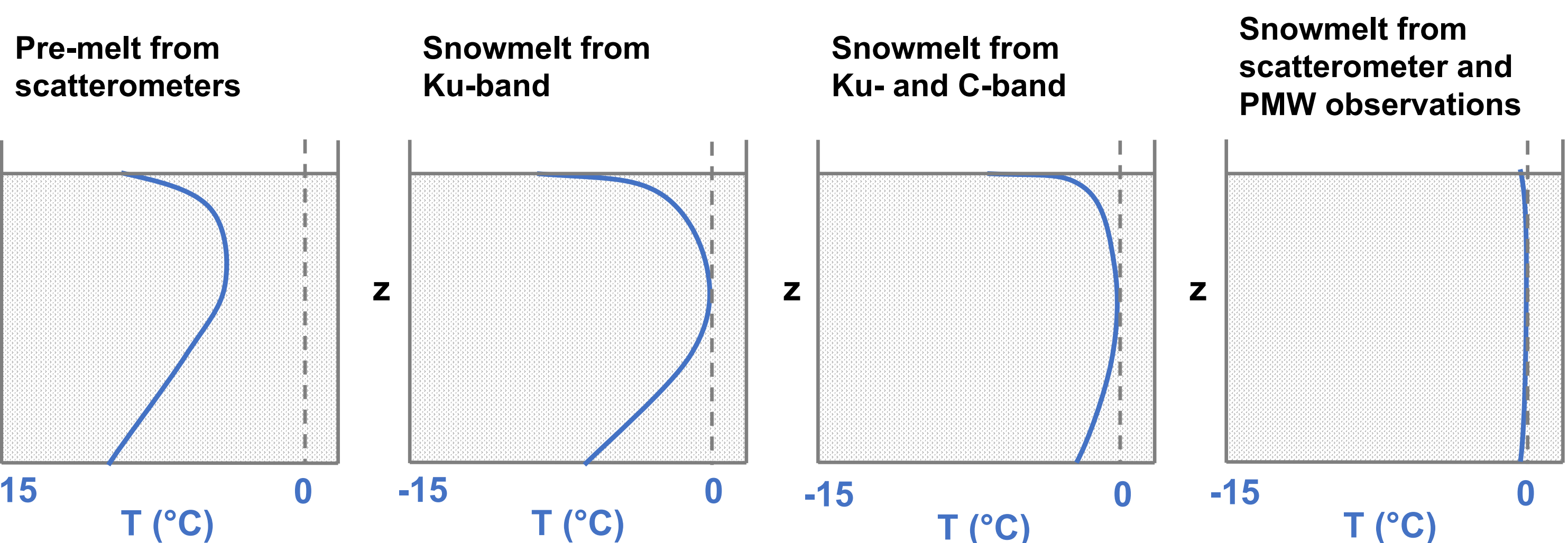
- Ku-band** (QSCAT scatterometer) derived pre-melt and snowmelt onset dates are **earlier by 25 and 11 days** than those derived from **C-band** (ERS/ASCAT scatterometers)



(left) Averaged time differences between pre-melt and snowmelt onset dates retrieved from Ku- and C-band for the overlap periods 1999/2000 and 2008/2009, respectively. (right) Averaged snowmelt onset dates for all study locations on perennial sea ice.

## Hypothesis

- Different sensors respond to snowmelt processes in different depths within the snow cover

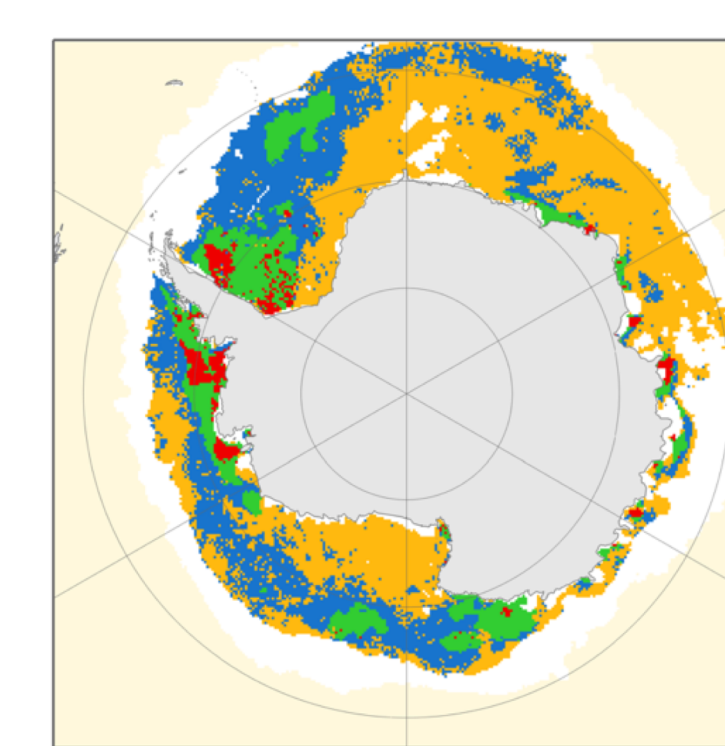
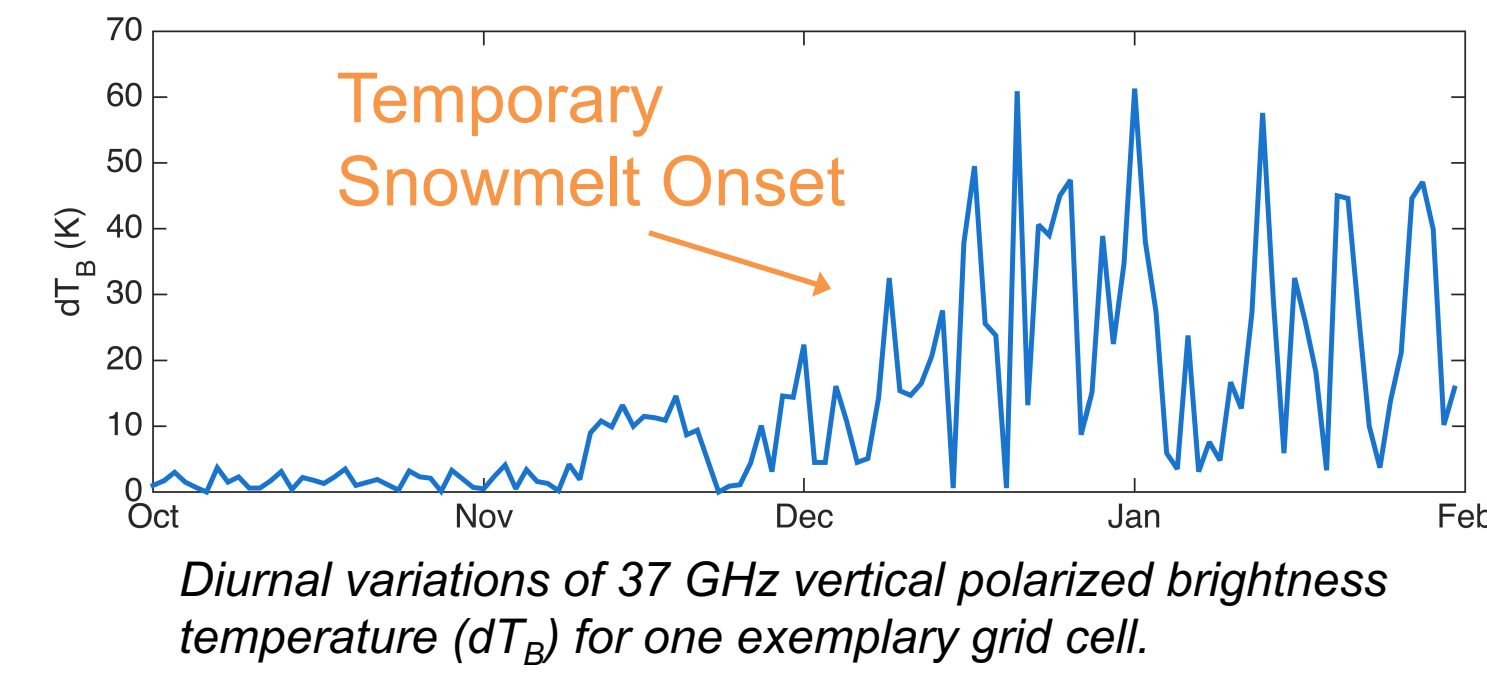


Schematic on changing vertical temperature profiles in the snowpack registered by different scatterometer and passive microwave (PMW) sensors at different points in time.

## Snowmelt patterns from passive microwave observations

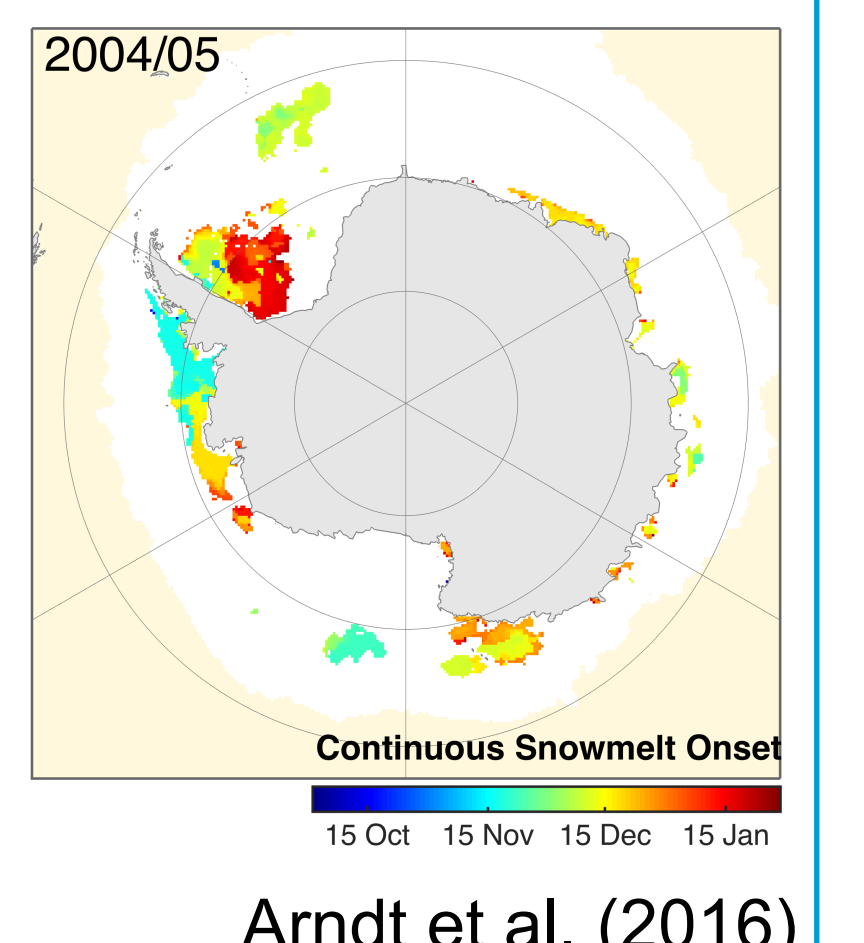
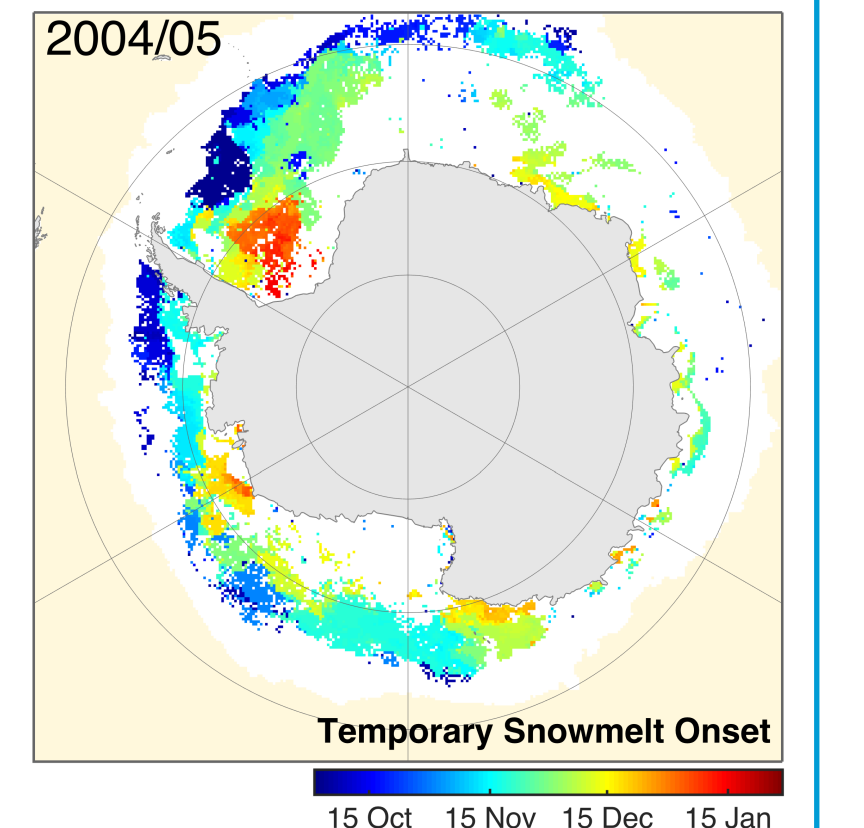
### Method

Analysis of diurnal variations in brightness temperature (passive microwave, 37 GHz, vert. pol.)



- No diurnal cycles, no strong melt (Type D)
- Diurnal cycles and strong melt (Type C)
- No diurnal cycles but strong melt (Type B)
- Diurnal cycles, no strong melt (Type A)

Classification of Antarctic sea ice into four characteristic surface types.



Arndt et al. (2016)

## Spatial variability of snowmelt onset dates

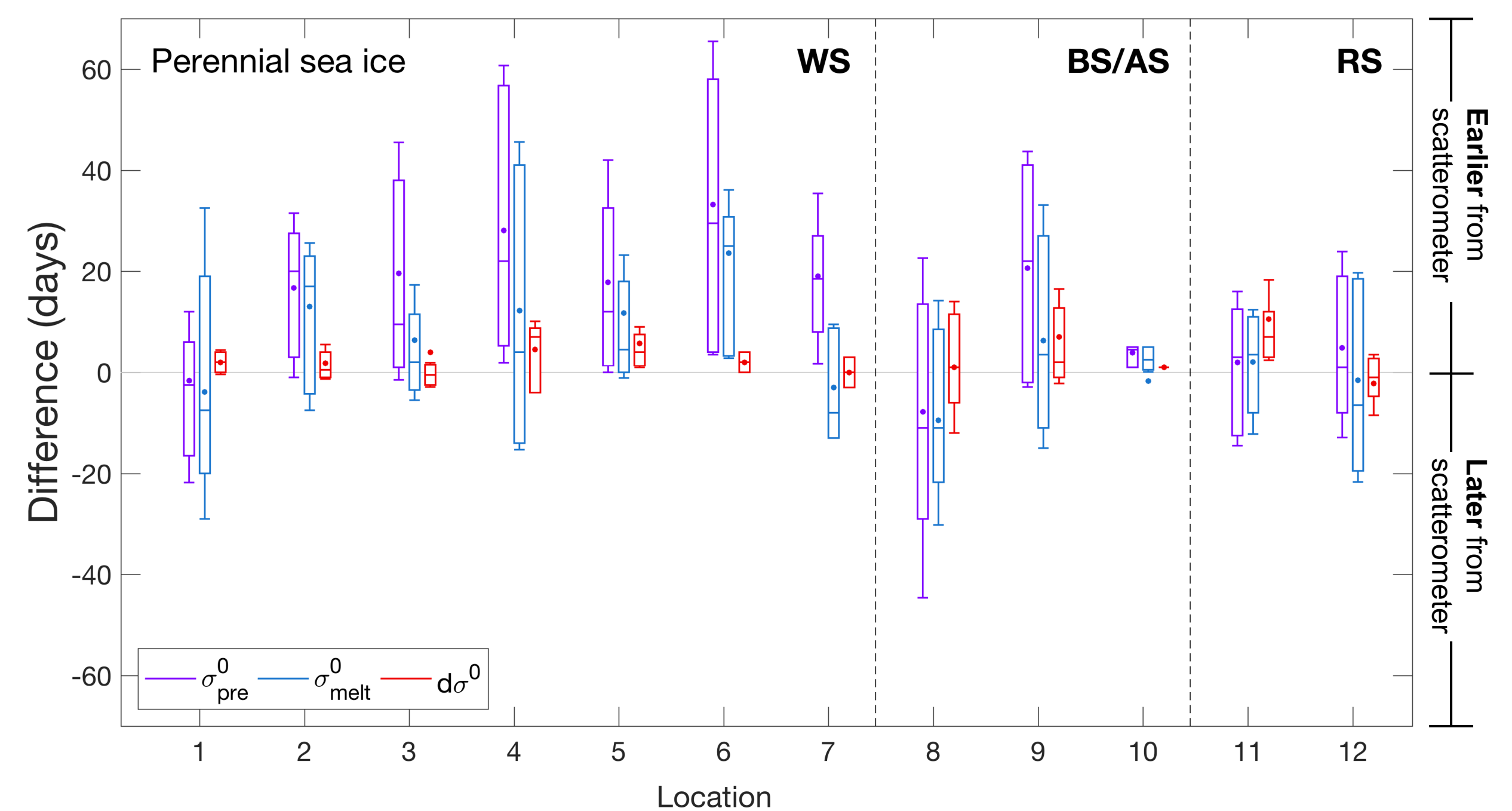
- Latitudinal gradient in snowmelt onset dates

Region	From scatterometer data			From passive microwave observations
	Pre-melt Onset	Snowmelt Onset	Diurnal thawing-refreezing Onset	Temporary Snowmelt Onset (TeSMO)
Southern Weddell Sea	27 Nov ± 25 days	16 Dec ± 19 days	19 Dec ± 13 days	21 Dec ± 11 days
Northern Weddell Sea	24 Nov ± 16 days	06 Dec ± 16 days	09 Dec ± 9 days	13 Dec ± 11 days
Bellingshausen Sea	01 Dec ± 29 days	04 Dec ± 27 days	19 Oct ± 20 days	19 Oct ± 28 days
Amundsen Sea	24 Nov ± 23 days	06 Dec ± 18 days	02 Dec ± 10 days	05 Dec ± 16 days
Ross Sea	11 Dec ± 18 days	15 Dec ± 17 days	13 Dec ± 8 days	16 Dec ± 10 days
<b>All regions</b>	<b>29 Nov ± 10 days</b>	<b>10 Dec ± 12 days</b>	<b>09 Dec ± 5 days</b>	<b>12 Dec ± 8 days</b>

Mean snowmelt onset dates for Antarctic perennial sea-ice areas.

## Snowmelt onset retrieval from different sensors

- Snowmelt onset dates from scatterometers are earlier by 13 and 5 days than those from passive microwave observations



Mean time differences between retrieved snowmelt onset dates from passive microwave observations and scatterometer observations for all study locations.

## Results

- Correcting for sensor differences between Ku- and C-band scatterometers allows to compile a **backscatter time series**
- Snowmelt onset dates show **no significant trend**
- Using satellite remote sensing sensors with different signal frequencies might allow to **describe snowmelt processes in different snow layers**

