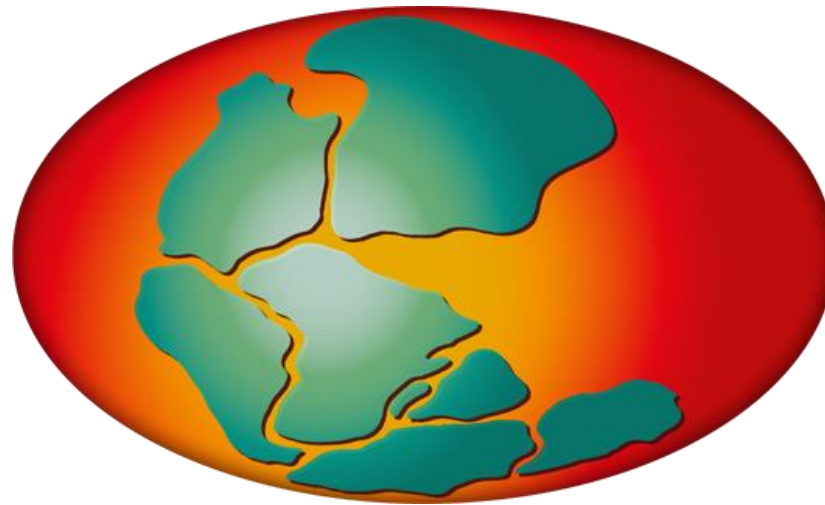


PANGAEA Data Publisher for Earth & Environmental Science **SPP1158 – update 2022**



Amelie Driemel, PANGAEA Team
Bielefeld, 2022-09-12

Two hard facts regarding data

- All **hardware will** eventually **fail**
- **Human failure** has many dimensions
 - accidental deletion
 - loss/chaos/neglect
 - ignorance
 - life happens..



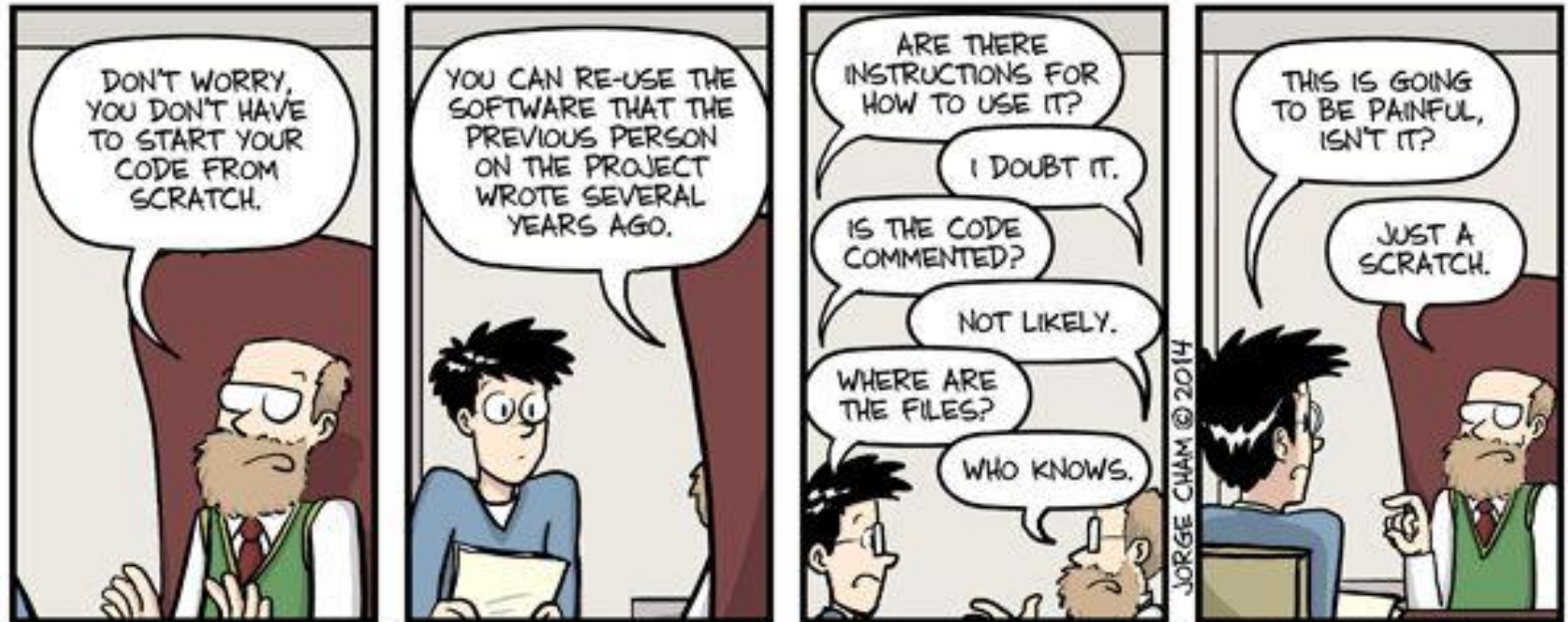
Scenario 1: losing your data

THE FOUR STAGES OF DATA LOSS DEALING WITH ACCIDENTAL DELETION OF MONTHS OF HARD-EARNED DATA

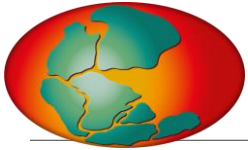


www.phdcomics.com

Scenario 2: working with data from others



WWW.PHDCOMICS.COM



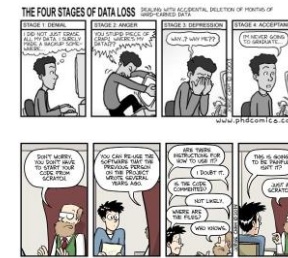
PANGAEA - Why am I here?

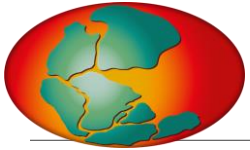


- PANGAEA is an open access Data Publisher and is the **designated database for SPP1158** (data + metadata!)
- Your data are stored **georeferenced** in space and time
- Your datasets receive a **citabile and permanent DOI**
- Your datasets can be **found** via the internet and can be **downloaded** from the PANGAEA web page (**moratorium possible!**)

=> Your data are safe with PANGAEA!

=> Your data are reusable for others!





SPP data in PANGAEA

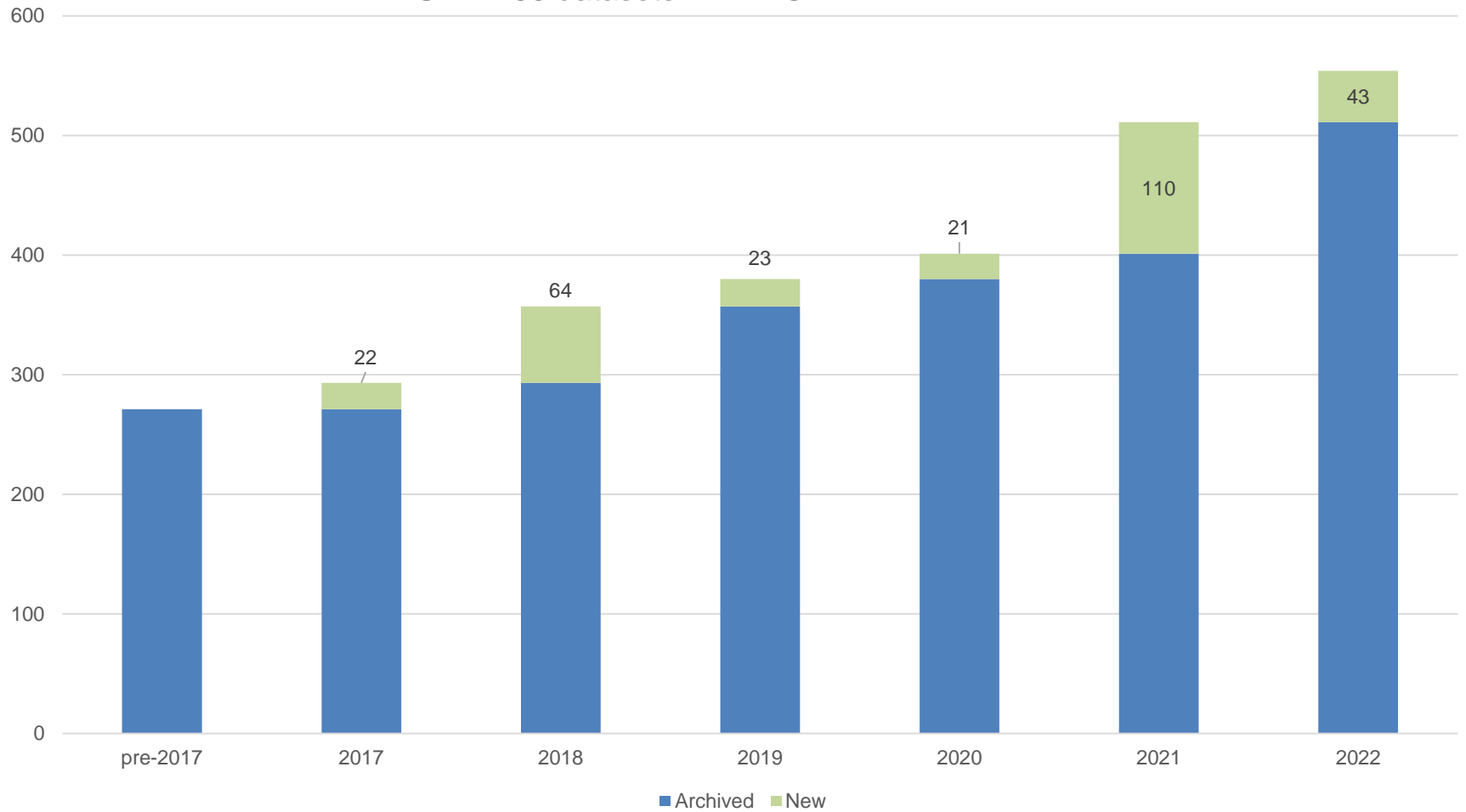


DFG-SCHWERPUNKTPROGRAMM 1158

ANTARKTIS FORSCHUNG

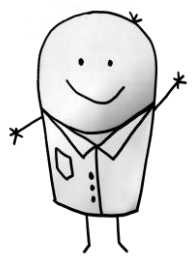
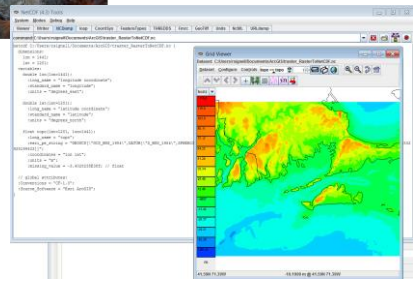
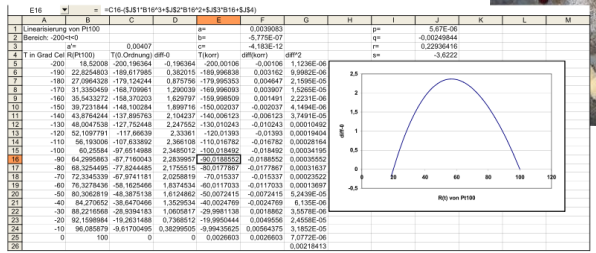
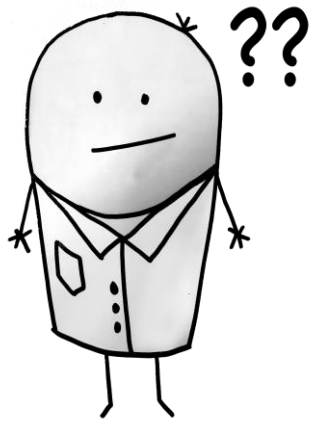
mit vergleichenden Untersuchungen in arktischen Eisgebieten

SPP1158 datasets in PANGAEA

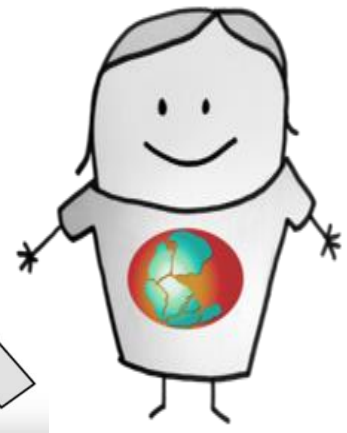
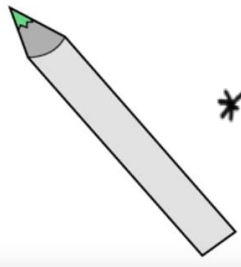


2022: 554 datasets

This is life..



- ### Checklist
- the final dataset
 - information about geolocation
 - a title for your dataset
 - list of authors of your dataset
 - tentative citation of article

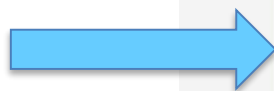


info@pangaea.de
<https://wiki.pangaea.de/>



PANGAEA.

Data Publisher for Earth & Environmental Science



**Submit
Data**



ALL TOPICS ▾

measurement type, author name, project, taxa,...



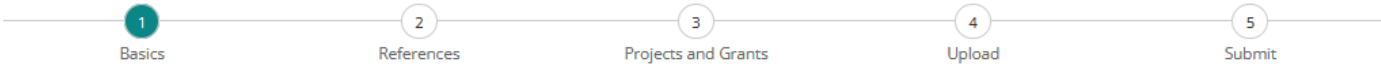
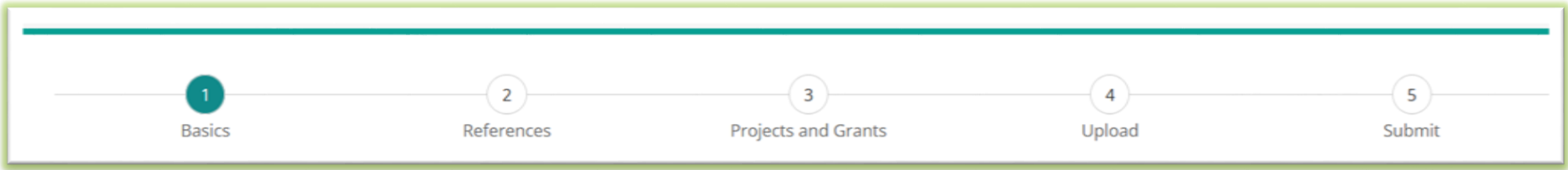
TOPICS

MAP



F
-
J
I
S
U
I
r
n
d
F
M
i
s
d
V
C
C
s
d
C
P
t
l
d
E
N
f
i
d
D

Data submission form



Basic Information

Title*

The title should ideally reflect what has been measured, observed, or calculated, when, where, and how.

Authors*

Please, enter the author(s) (the principal investigators) for the data set(s) you want to submit.

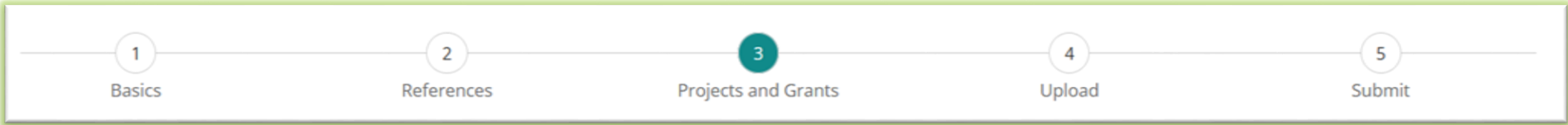
Keywords

Press 'Enter' to create a keyword.

Abstract/Describe your Data*

Abstract: **Mandatory** details about abstract requirements of your data set can be found here: <https://wiki.pangaea.de/wiki/Abstract>.

License*



1 Basics 2 References 3 Projects and Grants 4 Upload 5 Submit

Projects and Grants

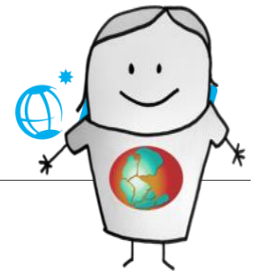
Projects and/or Awards/Grants

SPP	Project website	Award/grant title and/or number
SPP2017: Earth surface response to Quaternary faulting and shallow crustal structure in the eastern Adria-Alpine collision zone and the Friulian plain		
SPP1158: Priority Programme 1158 Antarctic Research with Comparable Investigations in Arctic Sea Ice Areas		
SPP1375: Priority Programme 1375 CAMPLE: South Atlantic Margin Processes and Links with Onshore Evolution		
SPP1704: Priority Programme 1704 DynaTrait: Flexibility Matters: Interplay between Trait Diversity and Ecological Dynamics Using Aquatic Communities as Model Systems		
SPP1889: Priority Programme 1889 Regional Sea Level Change and Society		
SPP1374: Schwerpunktprogramm 1374 - Exploratorien zur funktionellen Biodiversitätsforschung		

Back Next

[Read our data submission guidelines.](#)

Datasubmission Tool v1.14



1
Basics

2
References

3
Projects and Grants

4
Upload

5
Submit

Submit

Comment

Please, use this field for any further comments for our editorial team.

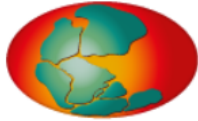
Moratorium required

Terms of Use*

In order to submit data to PANGAEA, you have to read and accept our **terms of use**. If you do not check this box, our editorial team cannot process your data submission!

Back

Submit

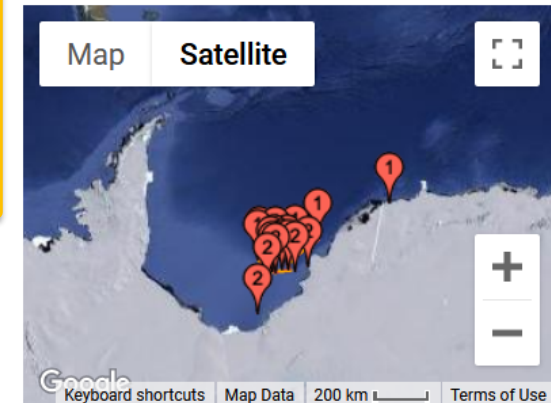
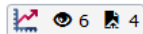


Citation:

Arndt, Stefanie; Haas, Christian (2022): Snow stratigraphy measurements at ice stations during RV POLARSTERN cruise PS124. *Alfred Wegener Institute, Helmholtz Centre for Polar and Marine Research, Bremerhaven, PANGAEA*, doi <https://doi.org/10.1594/PANGAEA.945857>

Always quote citation above when using data! You can download the citation in several formats below.

[BIB Citation](#) [BibTeX Citation](#) [Copy Citation](#) [Facebook](#) [Twitter](#) [Show Map](#) [Google Earth](#)



Abstract:

Measurements were obtained doing classical snow pits at all ice stations during RV POLARSTERN cruise PS124. Snow pits were taken at representative locations of the floe. Measurements were done on an undisturbed shaded working wall of the snow pit

Keyword(s):

Antarctic [Q](#); AWI_Sealce [Q](#); D

Project(s):

Priority Programme 1158 A
Sea Ice Physics @ AWI (AWI_

Funding:

German Science Foundation
Investigations in Arctic Sea

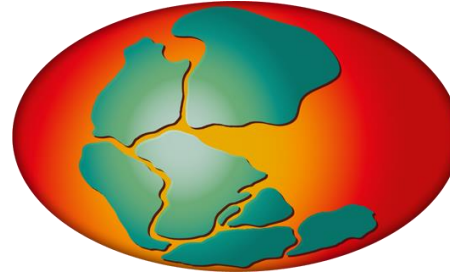
Your dataset in PANGAEA is **in review and access restricted** until you are completely happy with it!

(also possible until final publication of your manuscript)

Coverage:

Median Latitude: -74.137183 * Median Longitude: -28.245176 * South-bound Latitude: -75.002167 * West-bound Longitude: -36.155500 * North-

Thanks!



<http://www.pangaea.de/submit/>
<https://wiki.pangaea.de/>
info@pangaea.de

or E-Mail to: amelie.driemel@awi.de

